

center for environmental research, education & outreach



CEREO is committed to advancing environmental research by addressing complex issues through collaborative, community-driven initiatives.



Our Center specializes in **systems thinking** approaches & **community engaged scholarship** strategies to boost research ideas to the next level.

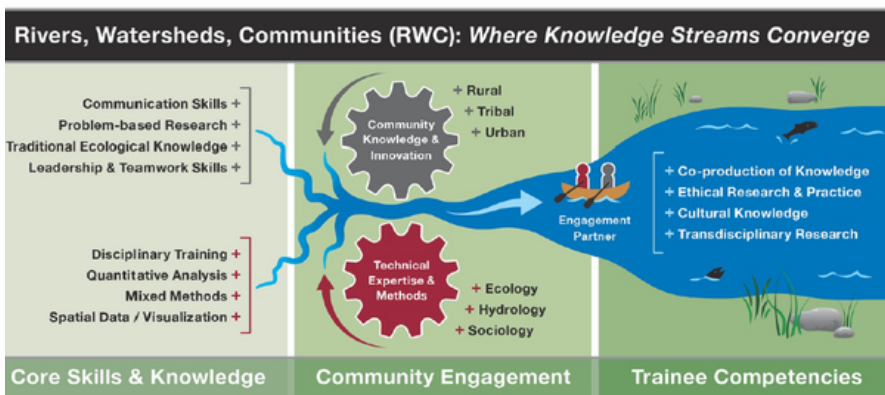
CEREO At-A-Glance

We use innovative approaches for building interdisciplinary capacity & expertise :

- **Informal networking events**
 - Climate & Coffee, CHEER-EO
- **Topical seminars & workshops**
 - data wrangling workshops, TEK seminars
- **Proposal development support**
 - Interdisciplinary proposal workshops, team support, facilitating in pre- & post-award support



Our unique expertise and tools help PIs to craft compelling research deeply integrating research, education, & engagement.



- Rivers, Watersheds, and Communities Graduate Training Program
- Pathways Program
- Firewise Watersheds
- And many more....

We provide institutional support for community-engaged scholarship:

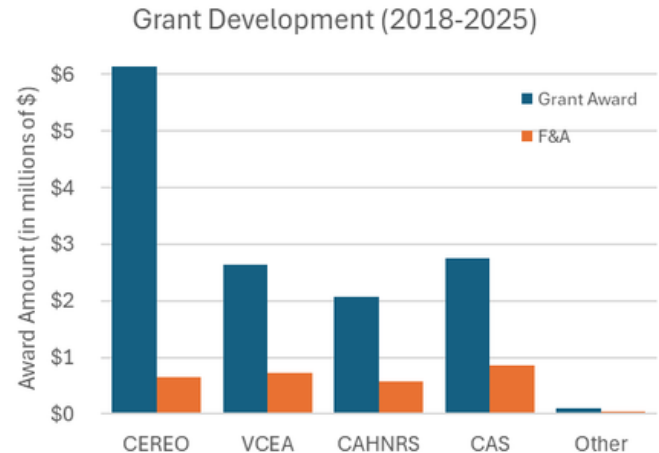
- **Coordinating resources** and efforts across the WSU system
- **Holding symposia** to share work and learn from others
- Host a **graduate certificate program**



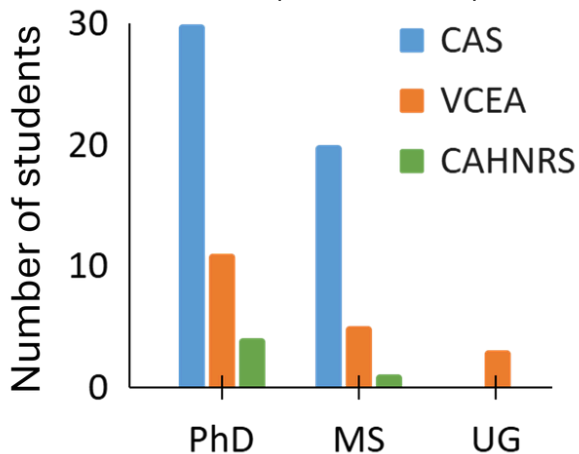
CEREO By-the-Numbers

We specialize in wrangling large, complex interdisciplinary projects:

- 97 proposals submitted since 2010,
- CEREO proposal success rate: 32%
 - 24 grants awarded since 2018
 - \$13M since 2018 (\$1.89M in F&A)
- Grants were funded by NSF, USDA, NASA, USGS, USFS



Students supported on CEREO Grants (2018-2025)



We reduce the friction of bringing together expertise from across WSU:

- We support grants that span faculty and students from:
 - CAHNRS, CAS, VCEA, Native & International Programs
 - 4 Campuses
 - 13 Departments

We help build and maintain relationships within and across WSU:

- 489 CEREO Affiliates
- dozens of non-academic partners engaged in research and education
- 100+ seminars, training workshops, and network events since 2018



CEREO in CAS

CEREO plays a key role in supporting CAS researchers:

- **20** CAS faculty funded since 2018 totalling \$2.76M in awards to CAS
- **10** NW CASC fellowships awarded to CAS students / post-docs (~\$300k)
- **22** CAS trainees preparing for for non-academic careers in the NRT program

Recent CAS Highlights



NW CASC Graduate Fellow ('25-26)

Kelechi Ibeh is a doctoral student in the School of the Environment on the Pullman campus studying interactions between forest management strategies and ecosystem services across Pacific Northwest landscapes. His research integrates advanced landscape modeling, ecosystem service quantification, and decision science to address one of forestry's most pressing challenges: how best to manage forests for multiple objectives under climate uncertainty.

Total funding awarded: \$74,992



Dams as Adaptive Management Systems (

Led by **Dr. John Harrison** (SOE- WSU Vancouver), the DAMS project was initially conceived of by Harrison during his CEREO Fellowship in 2015 and was developed using CEREO pre-award support to assist with budget wrangling, receive expert, and undergo friendly review.

Through this project, Harrison and his team are working with managers to understanding the interactions between dam and reservoir management, river function, and feedbacks to water managers, while training students to become experts, stakeholders, and decision makers in this process after graduation.

Total funding awarded: \$1,600,000

CEREO in CAHNRS

CEREO plays a key role in supporting CAHNRS researchers:

- 16 CAS faculty funded since 2018 totalling \$2.07M in awards to CAHNRS
- 5 NW CASC fellowships awarded to CAHNRS students / post-docs (~\$241k)

Recent CAHNRS Highlights

CEREO in VCEA

CEREO plays a key role in supporting VCEA researchers:

- 18 VCEA faculty funded since 2018 totalling \$2.6M in awards to VCEA
- 3 VCEA trainees preparing for for non-academic careers in the NRT program

Recent VCEA Highlights



Wildfire and Water Security in the Pacific Northwest

Many Pacific Northwest communities rely on forested watersheds for clean drinking water. But large, severe wildfires threaten drinking water quality and availability, or water security. Effects can persist for decades, increasing costs to communities. A multidisciplinary research team from nearly 30 organizations is helping forest and watershed managers understand and reduce the impact of wildfire on forested watersheds and drinking water systems.

CEREO info...?

WSU faculty came together over shared understanding: the most important questions facing our species have both biophysical and human dimensions, while the disciplinary and administrative organization of our research universities tends to separate these endeavors. CEREO exists to build communication and power/capacity across the old divides, within a growing state-wide (land-grant) system for research, education, and community-based partnership.

History of why CEREO was created

- hard for faculty to work together, lots of institutional friction. Provided system-wide support for creating and expanding capacity and know-how

What makes us invaluable

- complex challenges require skill sets we're not trained for in graduate school
- offers structure and process for doing research, regardless of topic
- survey results?
- We operate at the forefront of collaborative, transdisciplinary approaches to articulating and addressing our most important and engaging environmental problems
- We convene WSU capacity in research, education, and community outreach/engagement, across the disciplines and units and across the WSU system
- Cradle-to-grave research capacity development, from RFP brainstorming discussions to proposal-writing workshops to pre-and post-award administrative support
-
-

PHD students and \$\$- ping sasha too
helps people get bigger grants

Likes a proposal for that.

- a buy out for a faculty who wants to participate?
- some time for a director?
- propose something small that could get tucked in with WRC for “added value“