

Portland Air Toxics Solutions

A geographic approach to understanding and reducing air toxics

Five priority categories for reduction:

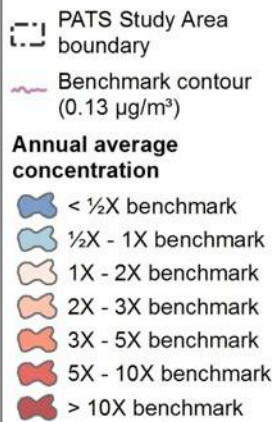
- Residential wood burning
- Cars and trucks
- Heavy duty vehicles
- Construction equipment
- Industrial metals facilities

Modeled Concentration by Pollutant

PATS 2017 MODELING RESULTS

BENZENE

BACKGROUND VALUES
NOT INCLUDED

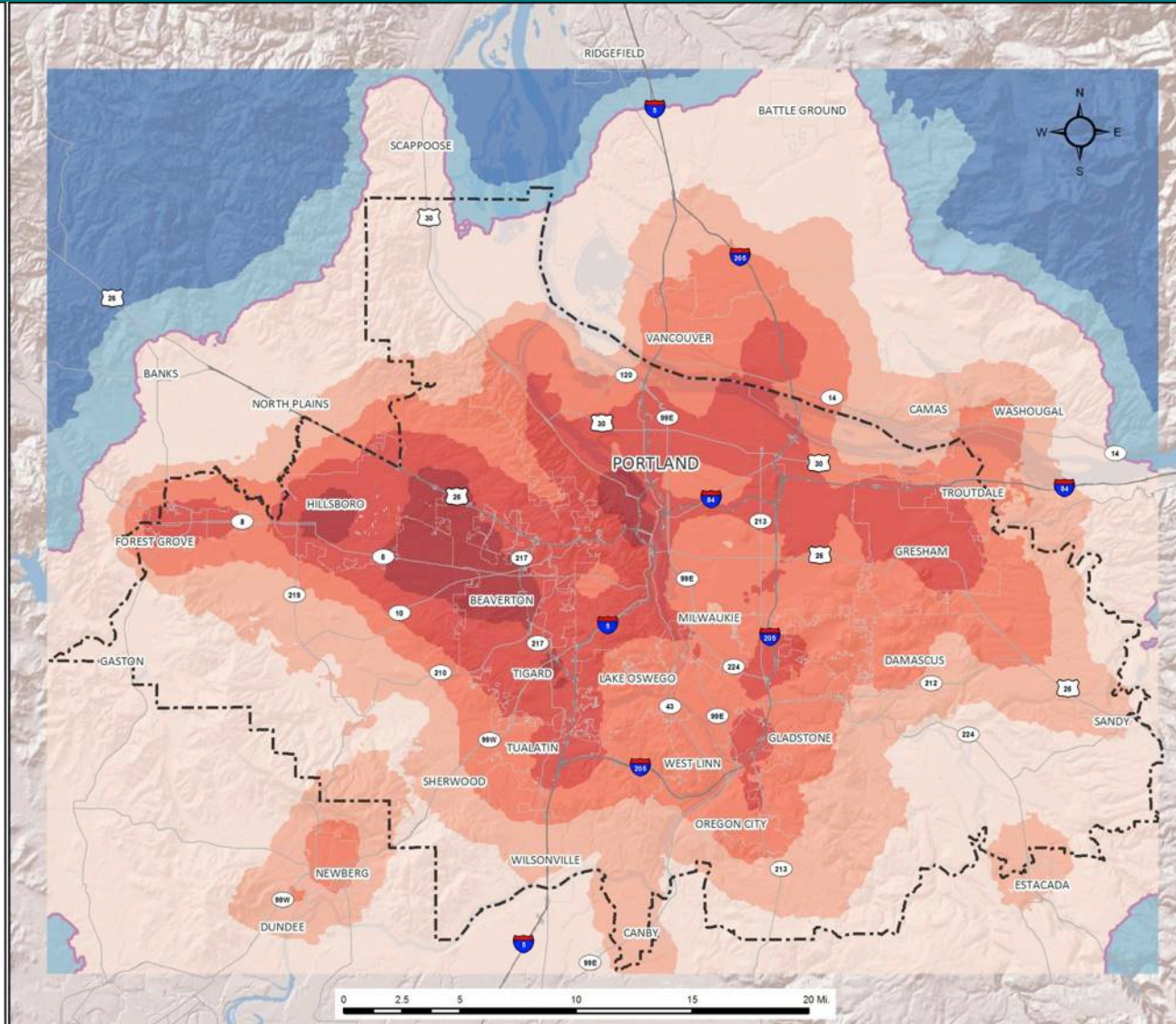


State of Oregon
Department of
Environmental
Quality

NOTE: Areas beyond the modeling domain (color-shaded region) are beyond the scope of this project.

REFERENCES:

Concentration data from DEQ Portland Air Toxics Study (PATS)
Basemap from Metro and ESRI data.



Date: 1/21/2011 Path: I:\Modeling-Concentrations-GIS\GIS\2017_2017_shapefiles\MXD\MXDs_20110121_PATS_2017_Benzene_nobg.mxd



State of Oregon
Department of
Environmental
Quality

PATS Total Estimated Risk

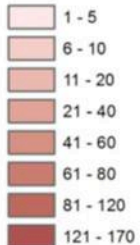
Portland Air Toxics Solutions

All Sources



State of Oregon
Department of
Environmental
Quality

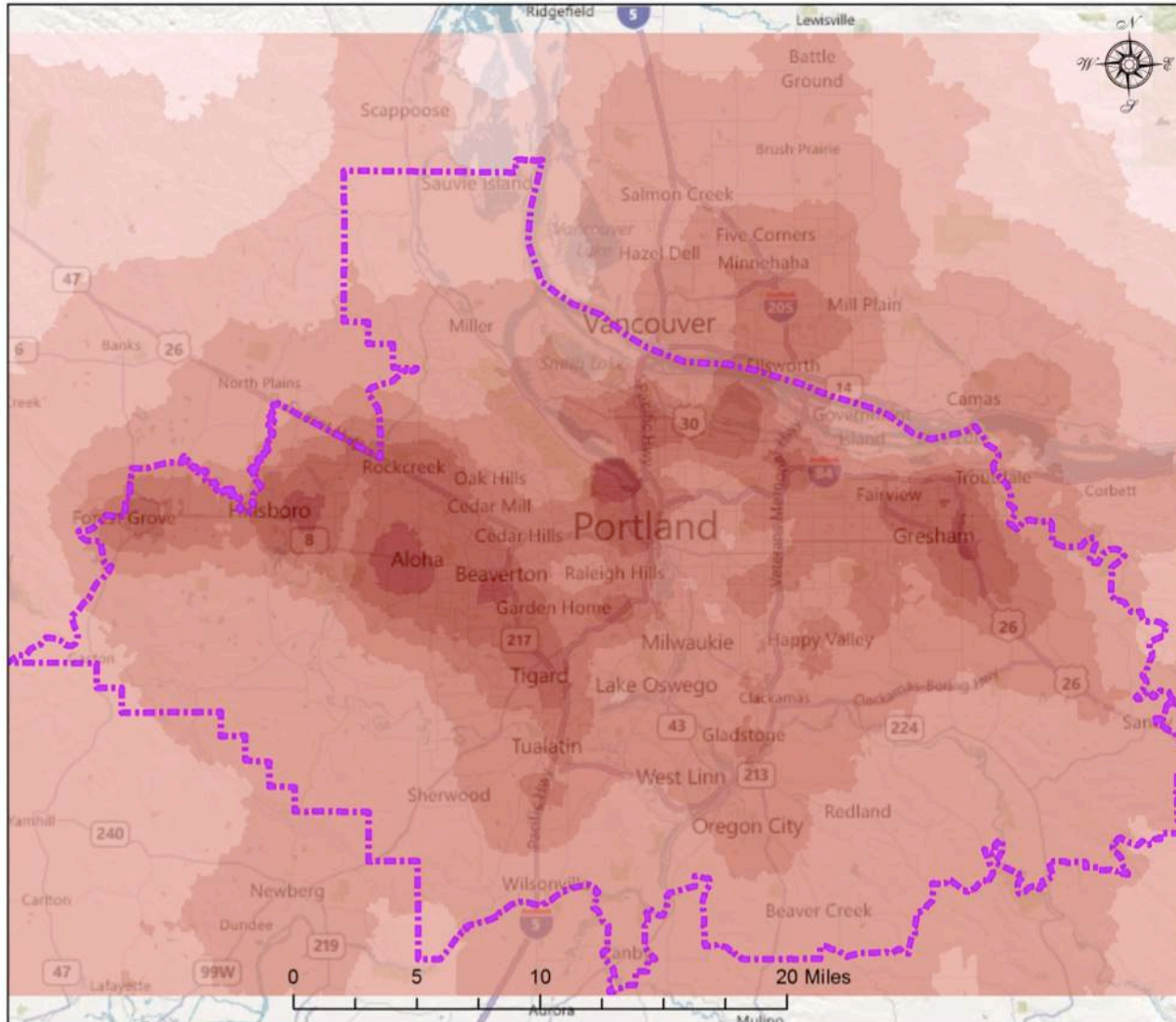
Times Above Benchmark



Less than 1

PATS Study Area

Reference:
PATS modeling results
ESRI base data



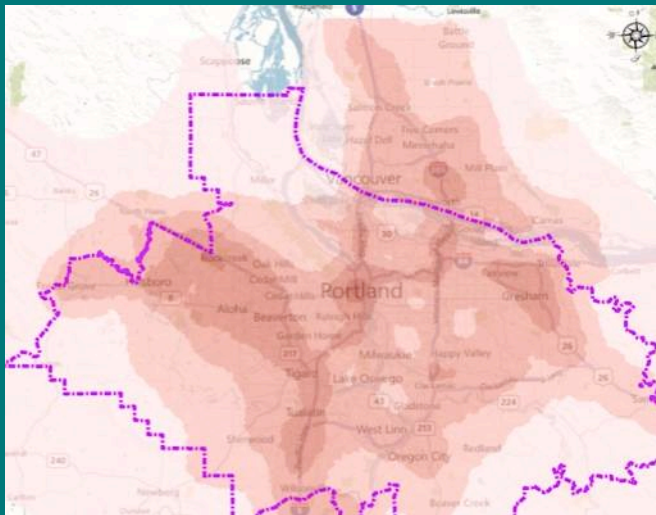
Path: G:\PortlandAirToxicsSolutions\EJEJ_Revised\GIS\EJ_Risk.mxd

Date: 7/14/2011

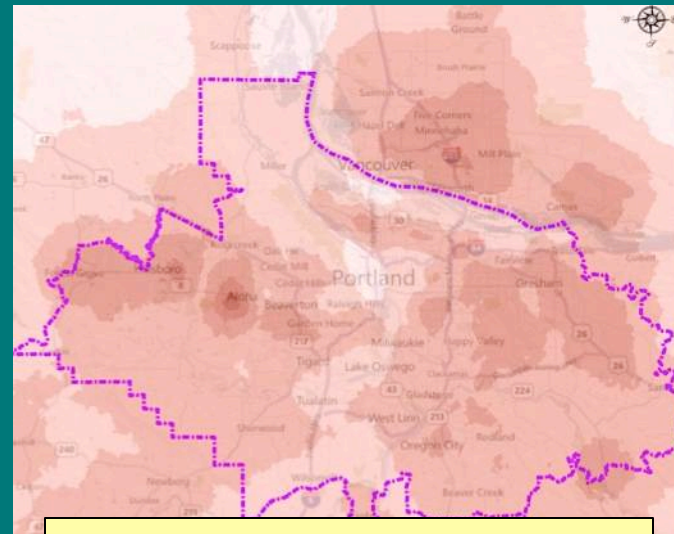


State of Oregon
Department of
Environmental
Quality

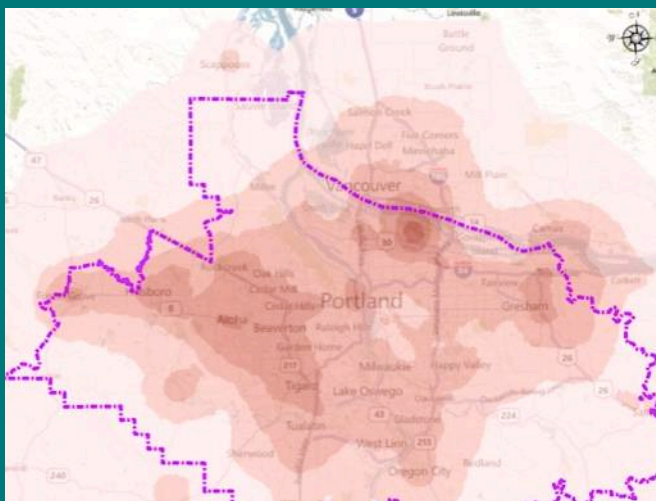
PATS Estimated Source Risk



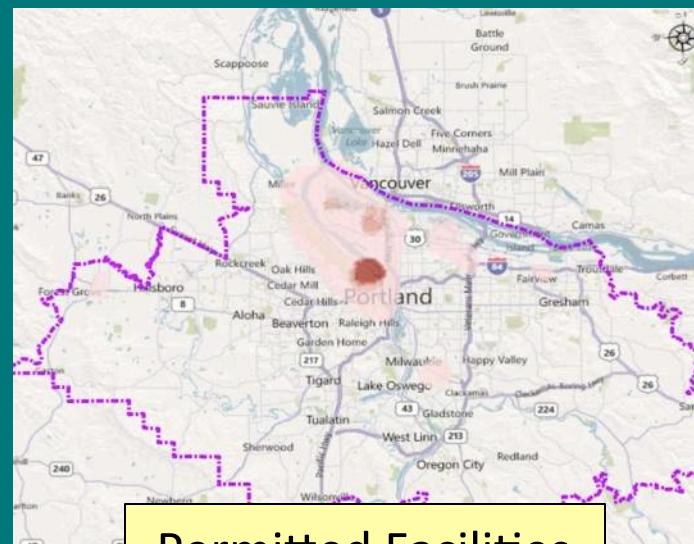
On Road Engines – Gas and Diesel



Residential Wood Burning

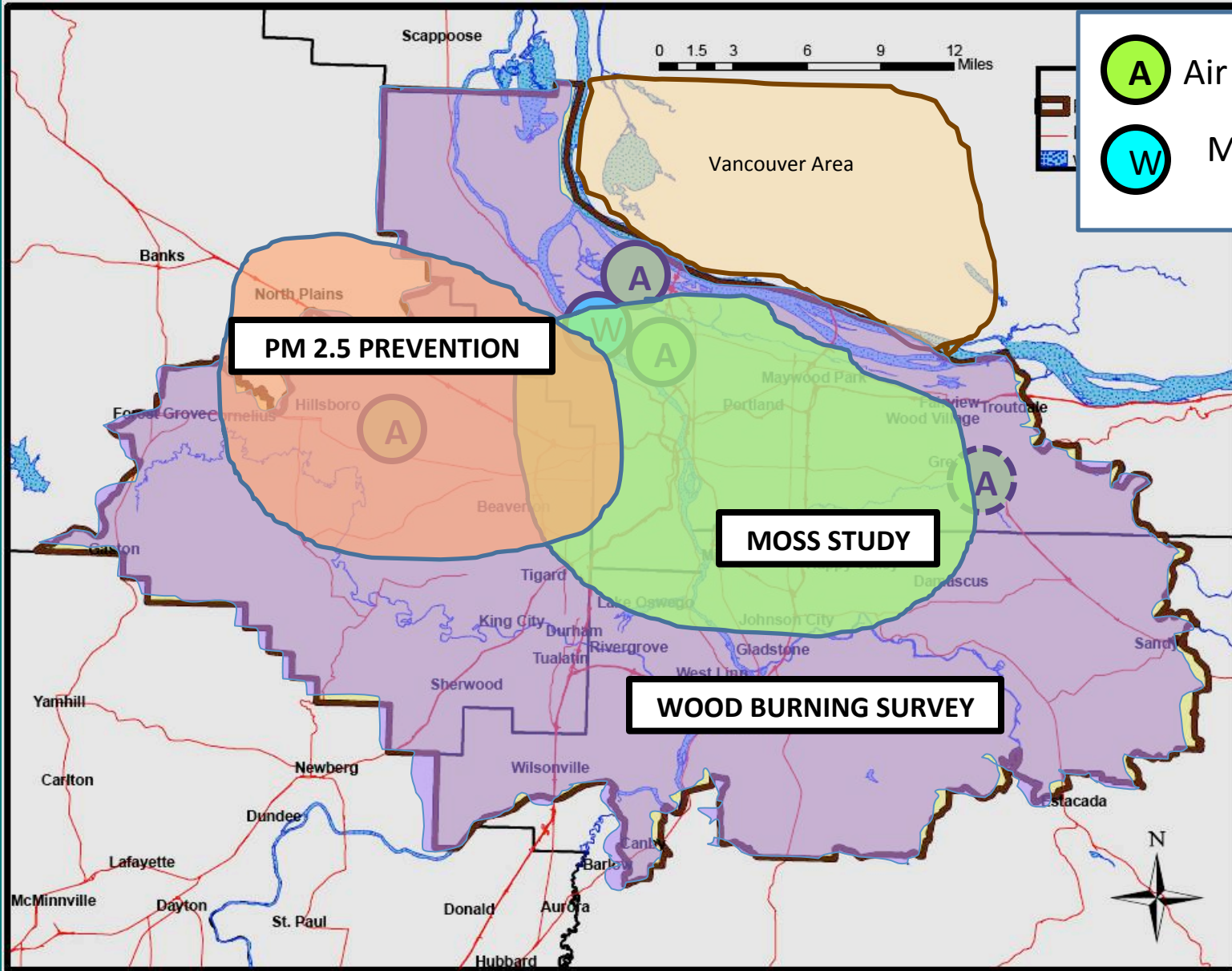


Non Road Engines – Mostly Diesel



Permitted Facilities

PATS Follow Up Projects



A Air Toxics Monitors

W Multiple Met Monitors

