

# NEWESD 101

## Farm to School

---



Kendra Dean  
Regional Child Nutrition Specialist  
Child Nutrition Services

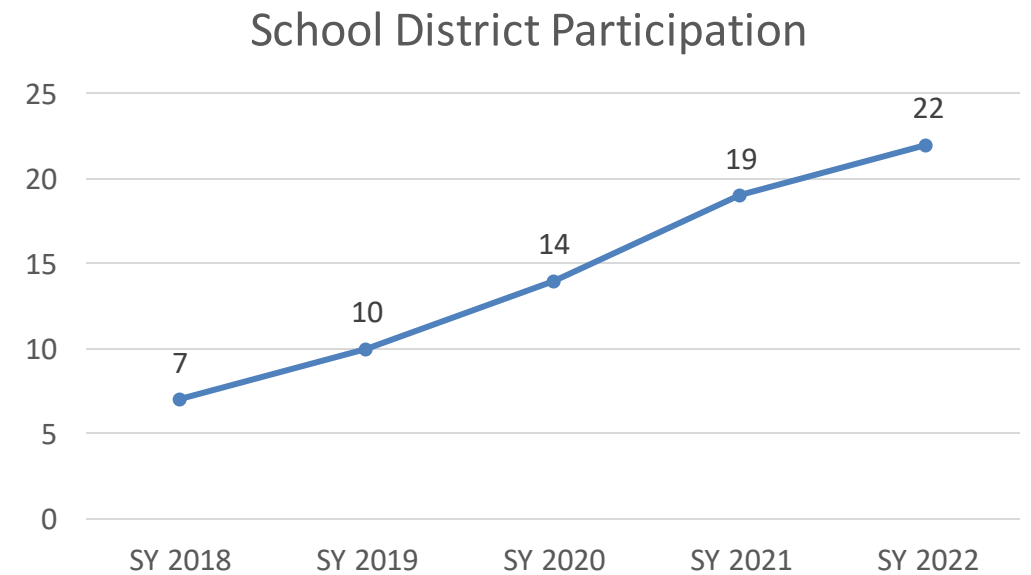
# AGENDA/OBJECTIVES

---

- Nutrition Cooperative Overview
- Farm to School with ESD 101
- Farm to ECE and SNAP-Ed
- Statewide SNAP-Ed support and opportunities

# Nutrition Cooperative

- Goals
  - Make life easier for foodservice professionals
  - **Improve program quality**
  - Meet federal regulations

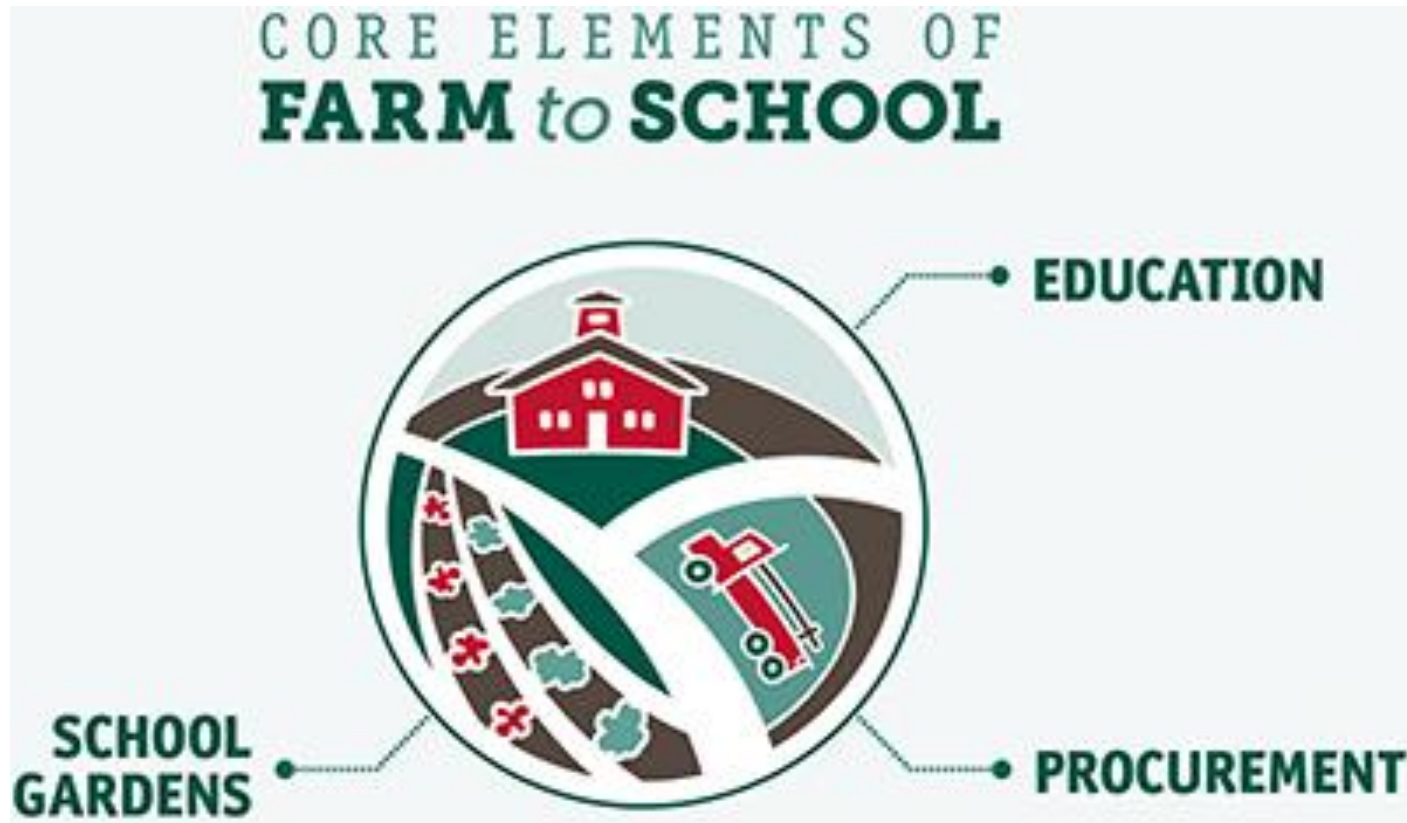


# Nutrition Cooperative

---

- Services
  - **Ongoing Mentorship/Support**
  - **Menu Planning Support**
  - **Culinary Schools Training**
  - Administrative Support
  - **Networking Opportunities**
  - **Grant Writing**
  - Audit Prep
  - Rules/Regulation Guidance
  - **Farm to School Assistance**

# Farm to School



**Procurement:** Local foods are purchased, promoted and served in the cafeteria or as a snack or taste-test;

**School gardens:** Students engage in hands-on learning through gardening; and

**Education:** Students participate in education activities related to agriculture, food, health or nutrition.

# History of Farm to School at ESD 101

---

- Began with a USDA F2S Planning Grant in 2019
  - Began with identifying partners
  - F2S Planning teams at school districts
  - ....Covid hit!
- WSDA Farm to School Purchasing grants
  - Released in 2021 – pilot from Jan 2022-August 2022
  - 5 Nutrition Cooperative school districts participated
  - 14 Nutrition Cooperative school districts for 2022-2023 school year

# Farm to School Support

---

- Procurement/Connecting local producers and school districts
- Menu planning around local foods
- Helping to coordinate/simplify ordering
- Training (culinary skills, equipment)
- Recipe development/standardization
- Monthly newsletters
- Events and indirect education
- Garden support
- Curriculum support

# Partnerships are KEY

---

- **Food Service Directors:** Trusting relationship with a history of mutual support
- **Farmers:** Clear and continued communication with farmers around what is available
- **Transportation:** Rural Resources and Catholic Charities Food for All
- **WSDA and OSPI:** Ensure rules and regulations are followed as related to the local purchasing grant and the National School Lunch Program and School Breakfast Program
- **Food Hubs:** Provide schools with more variety and a single ordering site
- ... and more!

# Success Stories





# Events and Indirect Education

- Meet Your Farmer Days
- Farm Field Trips (coming this Spring!)



# Systems change!

---

- We are working to change a food system that has operated the same way for a very long time.
  - Schools have used commodities and large mainline distributors.
  - Small farmers have not typically been in this market before.
  - Requires training, patience, higher costs.
  - It is important to celebrate successes and keep reminding partners that this will take time, but it is so WORTH IT!

# Farm to ECE: Getting Started

---

- Connect and ID interest!
  - Good place to start: Who received a WSDA F2S Purchasing grant?
  - HeadStart/ECEAP
  - OSPI
  - Visit a local farmers market
  - Check to see if you have a local food hub
  - Build relationships!



FOOD FOR ALL

*A program of Catholic Charities Eastern Washington*

# Farm to ECE: Procurement

---

- Brought together many partners
  - Helping to review regulations related to local foods
  - Helping to make connections
  - Training cooks on ordering
- This has not been seamless!
  - Procurement has been the biggest challenge
- Using relationships and connection
- NEW: WSDA Farm to School Grants!!



# Farm to ECE: Gardens

---

- Building Trust – Supporting centers in understanding regulations around gardening
- Installation
- Identifying ways to help make garden easier
- Providing support like plants and education



# Farm to ECE: Education

- Harvest for Healthy Kids and Harvest of the Month



# Statewide SNAP-Ed support

---

- Local procurement workgroup
  - Coordinated culinary training
  - Help with equipment grants
  - Funding for Harvest of the Month activities
- Farm to ECE alliance
- WSDA Farm to School Team
- OSPI Child Nutrition

# Do you know a school who could use equipment to support scratch cooking?

Do you work with a SNAP-Ed eligible school or ECE interested in doing more scratch cooking?

## SNAP-Ed

WA SNAP-Ed is offering schools and ECEs up to \$5,000 in kitchen equipment and supplies + consultation and training with a professional chef!



Know a school or ECE that's interested? Scan this QR code to complete a quick survey or contact Shannon Bachtel at [Shannon.Bachtel@wsu.edu](mailto:Shannon.Bachtel@wsu.edu)

This institution is an equal opportunity provider. This material was funded by USDA's Supplemental Nutrition Assistance Program – SNAP. Persons with disabilities who require alternative means for communication or program information or reasonable accommodation, please contact Shannon Bachtel at [Shannon.Bachtel@wsu.edu](mailto:Shannon.Bachtel@wsu.edu) by April 24, 2023.

# QUESTIONS?

## Thank You!

[www.esd101.net](http://www.esd101.net)

Kendra Dean

[kdean@esd101.net](mailto:kdean@esd101.net)

509-789-3560

Child Nutrition Services