

IYRP Kiosk Assembly Instructions



IYRP Kiosk Assembly Instructions

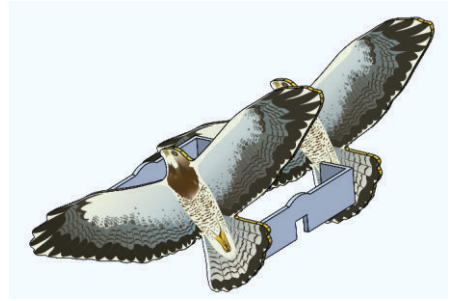
Kiosk Components



Large Cloud x1



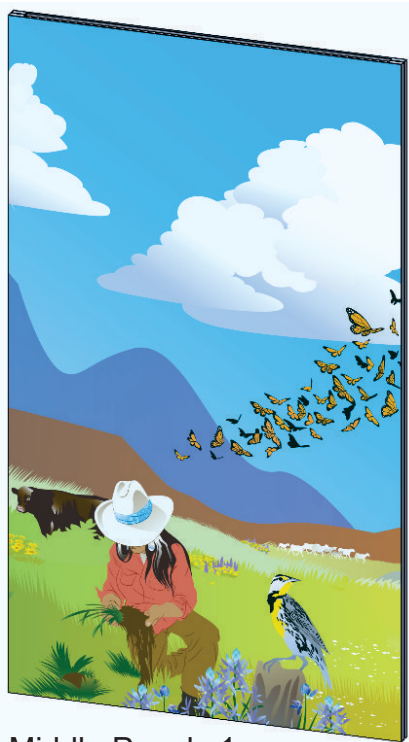
Small Cloud x1



Bird Assembly x1 (assembly required)



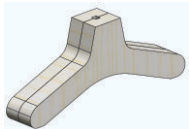
Left Panel x1



Middle Panel x1



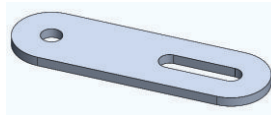
Right Panel x1



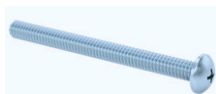
Foot x6



Wing Screw x8



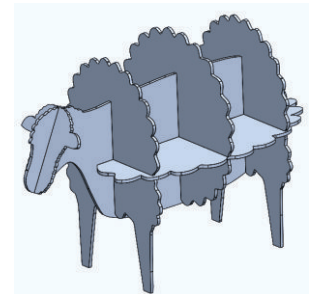
Hinge Strap x4



Foot Screw x6



Foot Screw Washer x6



Sheep x1 (assembly required)

IYRP Kiosk Assembly Instructions

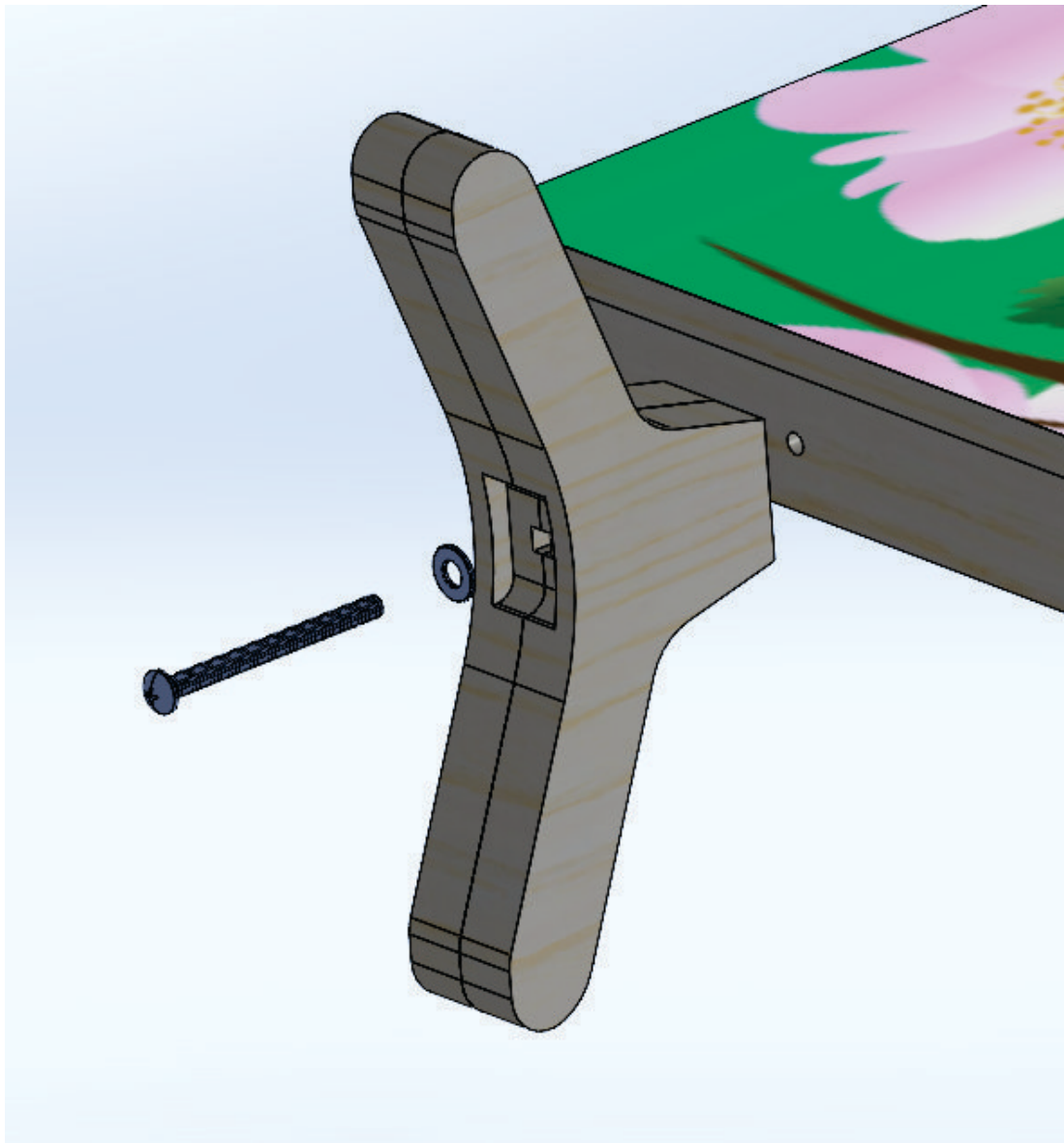
Panel Assembly

Tools required: Phillips head screwdriver



Step 1: Install feet on panel using feet screws and washers.

Bottom of panel has four internally threaded holes. Feet are installed on the inner two holes. Repeat on all three panels. Stand panels upright.



Note: If panels are to be oriented in a manner such that the feet interfere with one another, simply loosen the screw and rotate the foot 90 degrees and re-tighten screw.

IYRP Kiosk Assembly Instructions

Panel Assembly

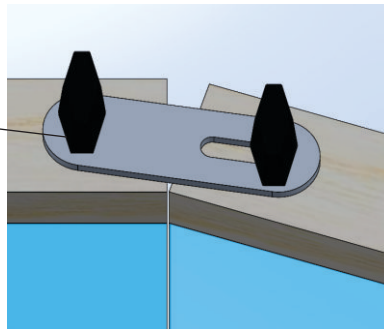
Step 2: Connect panels using hinge straps and wing screws.

Arrange panels so that they are edge to edge with artwork correctly lined up (fig. 1). Use the wing screws to attach the hinge straps to the remaining internally threaded holes on top and bottom of panels. Hinge straps have one circular hole and one slotted hole. Take care to keep circular hole and slotted holes vertically in line with each other - the hole on the top strap should be directly above the hole on the bottom strap and vice versa. This will allow the hinge to work as intended. (see figs. 2, 3)

fig. 1

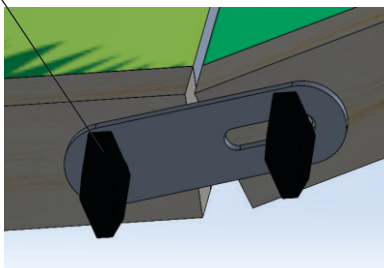


fig. 2



Hole side of hinge strap is on the right side of "Left Panel" at top and bottom of panel.

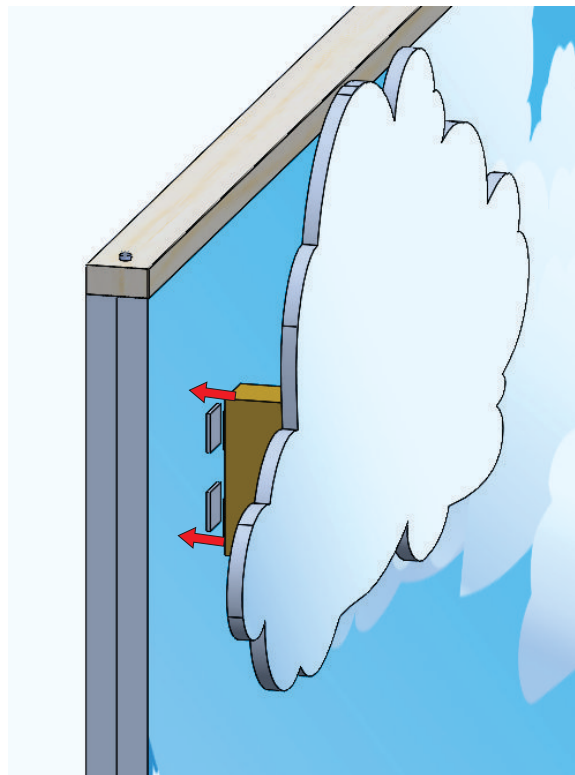
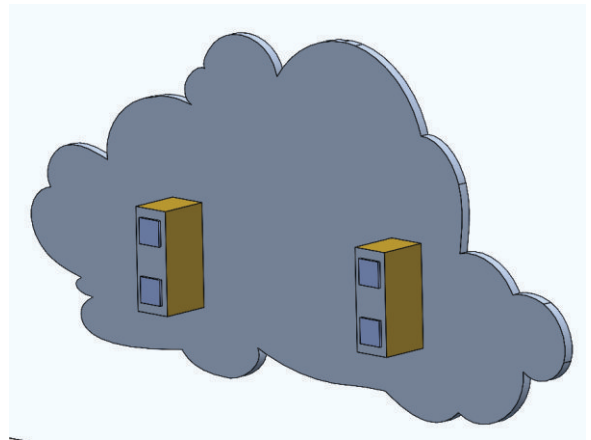
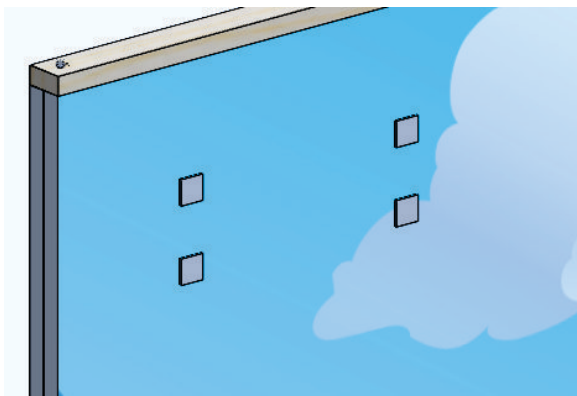
fig. 3



IYRP Kiosk Assembly Instructions

Cloud Attachment

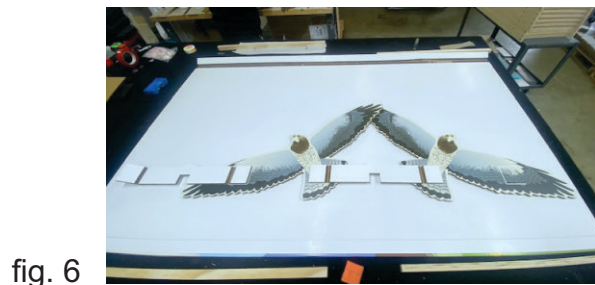
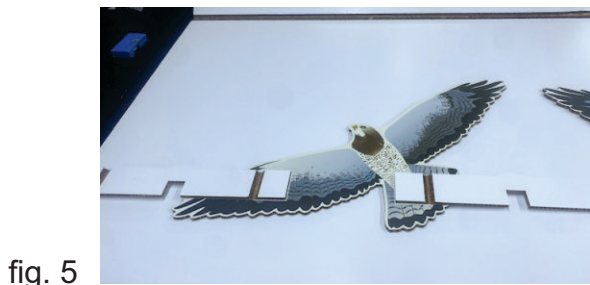
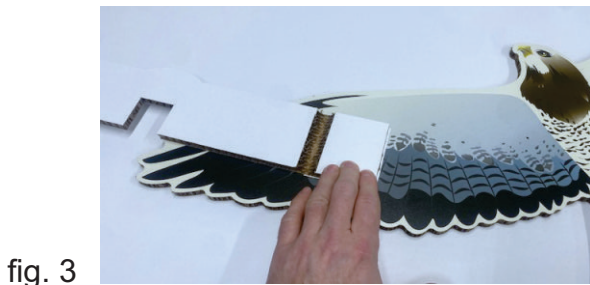
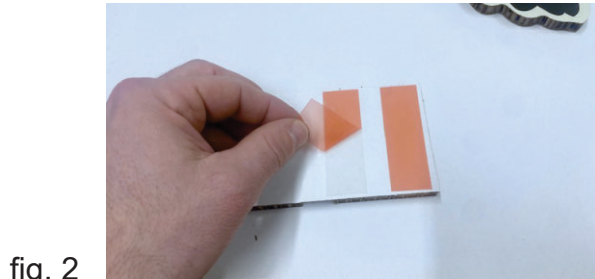
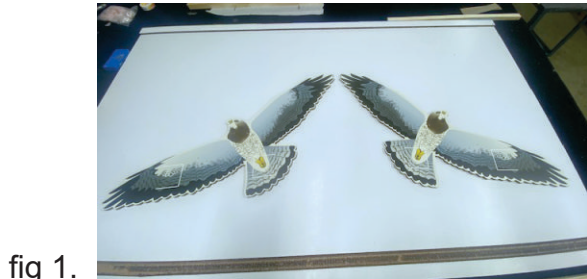
The clouds will attach to the panels with a hook-and-loop connection. The large cloud goes on the left panel, and the small cloud on the middle panel. To attach, align connection pieces and press firmly. You will hear a click/pop sound when the attachment pieces are fully engaged. It may be helpful to have someone stabilize the panel while pressing, as it takes a fair amount of pressure to engage. If only one person is pressing, be sure to do this step only after all panels are connected by hinge straps. The clouds should not wiggle once all four connection pieces are engaged. If there is movement, one or more connection pieces are not fully engaged.



IYRP Kiosk Assembly Instructions

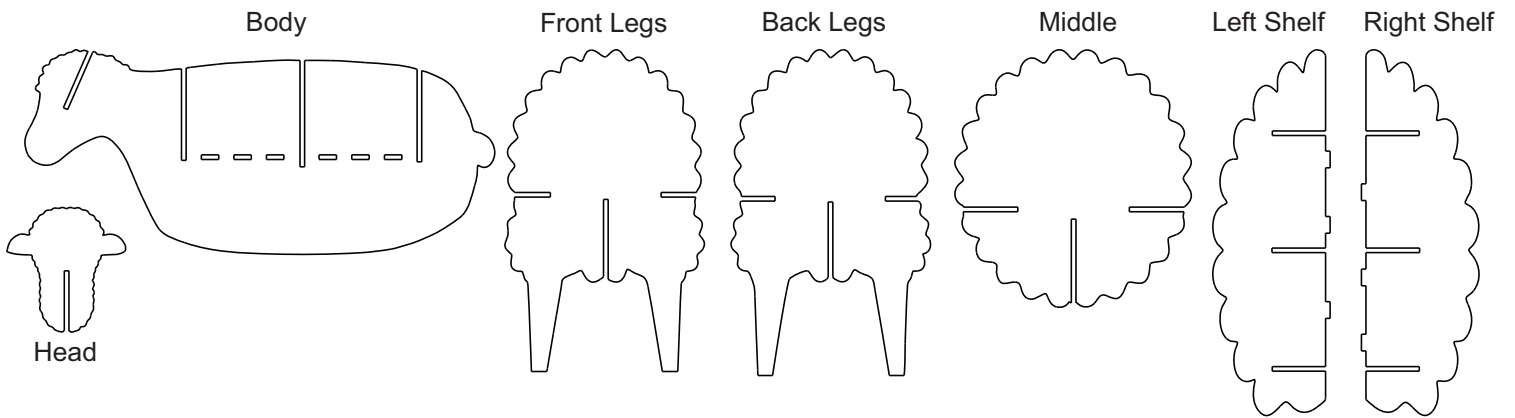
Bird Assembly

Each bird cut-out has a front and a back, and are mirror images of one another. The back of the birds have two white, C-shaped registration marks. Place birds side by side on flat surface with registration marks facing up (fig 1). Peel red backing from double-sided tape (fig 2). The fold of the crossbar should rest at the open side of the C-shape, and the notch in middle of crossbar should face down (fig. 3). Repeat on other side (fig. 4). Take great care to align crossbar before allowing tape to make contact with surface of bird. The tape used is very aggressive, and, once stuck, should not be attempted to be removed. Press firmly across tape locations to ensure full adhesion. Once both crossbars are on one bird (fig. 5), link the two birds by sticking one crossbar to the registration mark on the other (fig. 6). Lastly, carefully pick up bird and flip over the cross bar to stick final crossbar (fig. 7). Slide bird over top of 'Right Panel'.

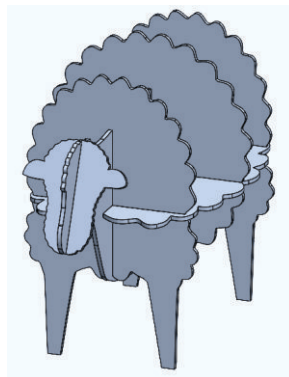
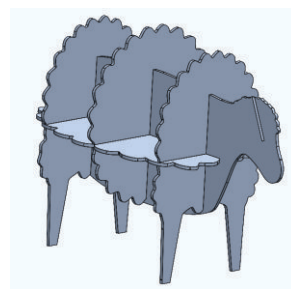
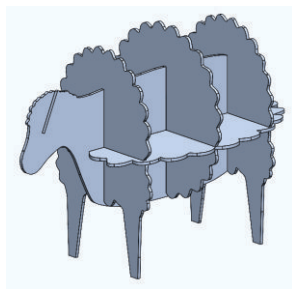
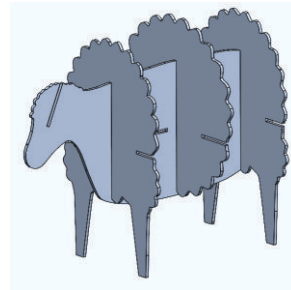
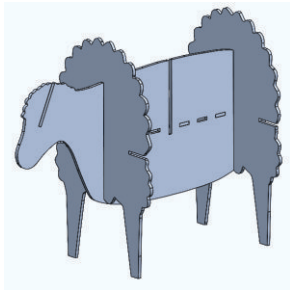


IYRP Kiosk Assembly Instructions

Sheep Assembly



Slide front and back legs onto sheep body, followed by the middle section.
Next, slide the left and right shelves into place. Lastly, slide head into place.



IYRP Kiosk Assembly Instructions

Potential Kiosk Panel Orientations

