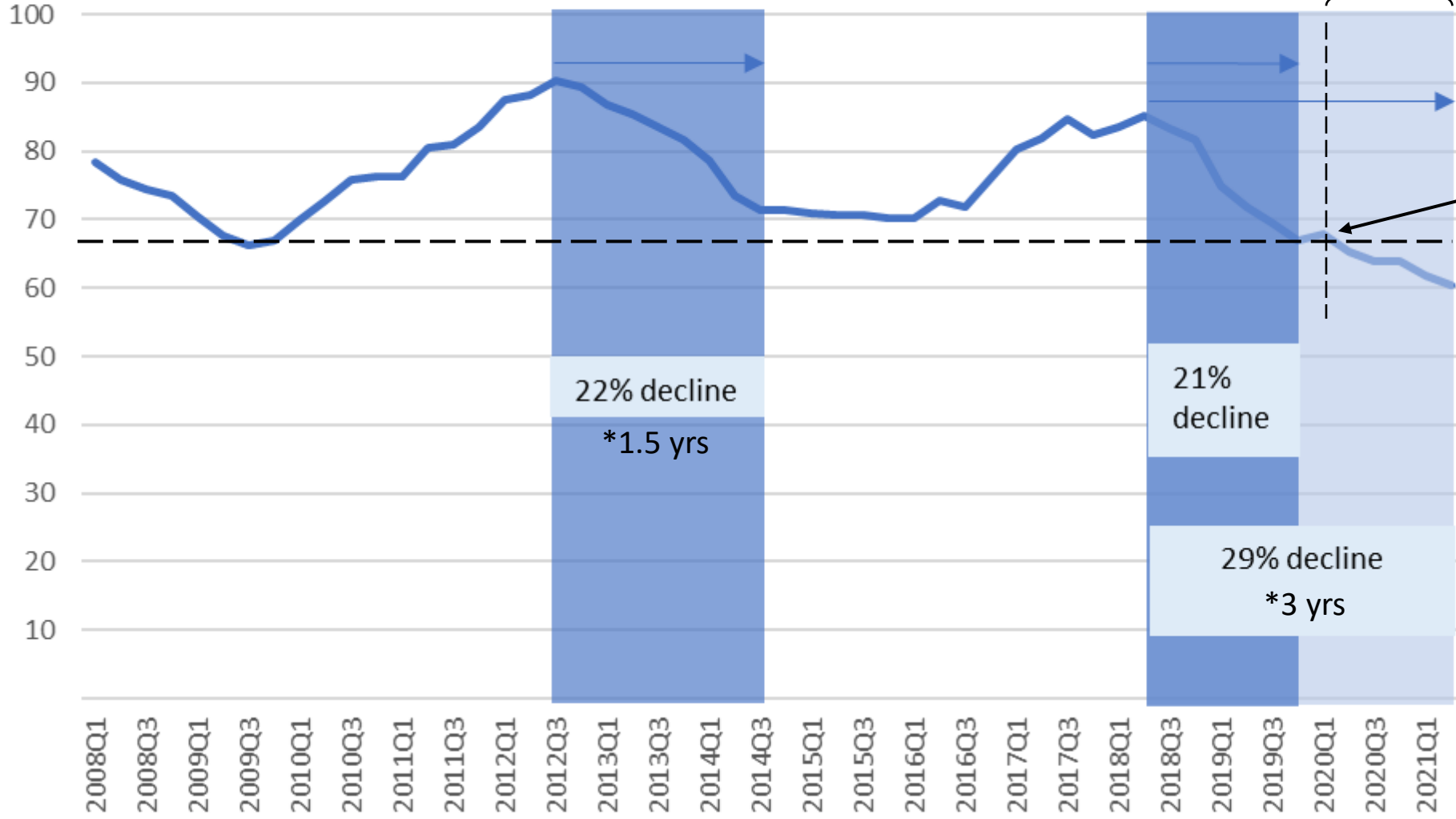


# Ag Labor Data Summaries

Thurston County, WA

June 2022

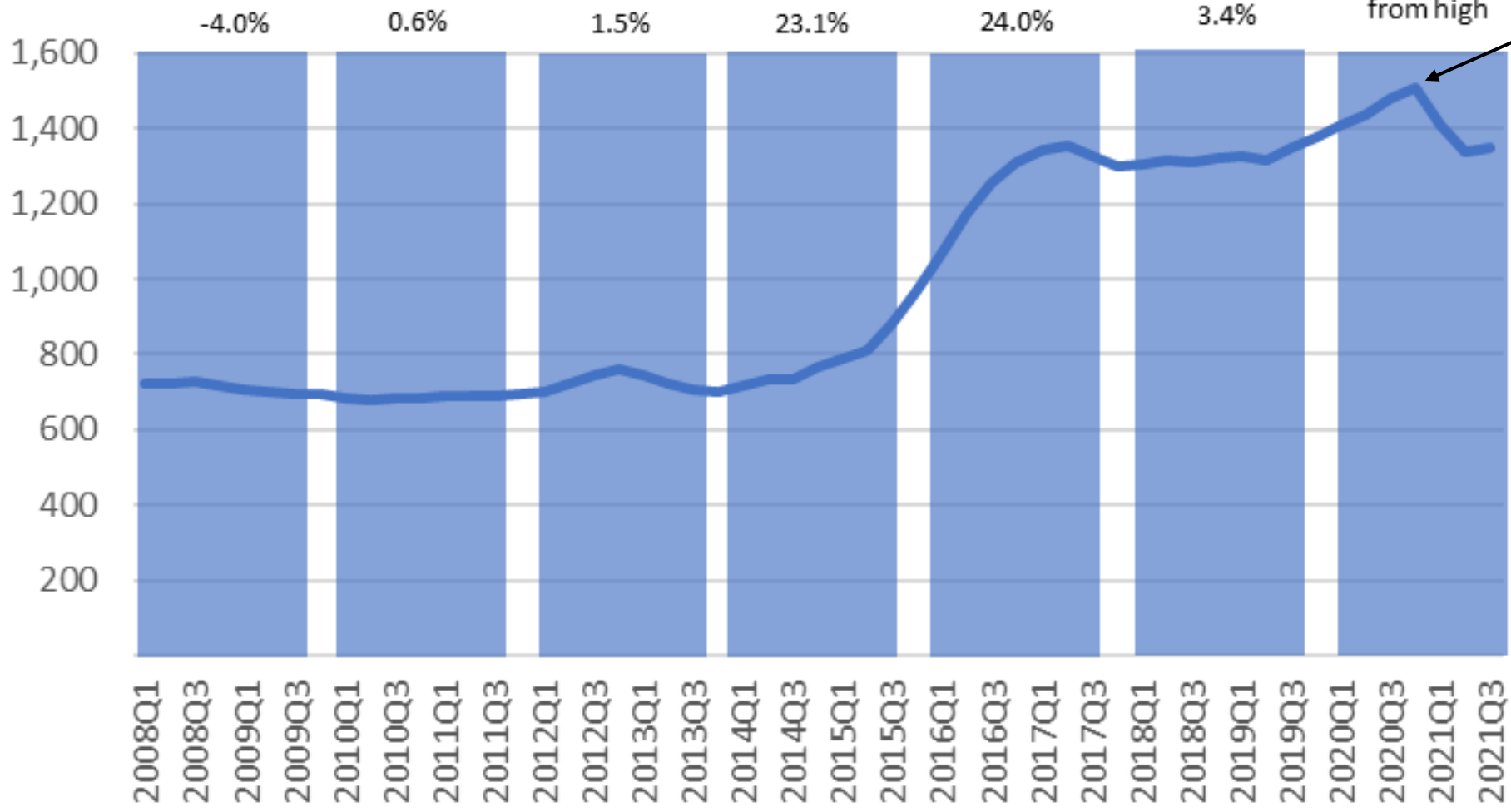
# Animal Slaughter & Processing



Q1-2020 to Q3 2021:  $\downarrow$ 9.8%  
*(meets threshold)*

- Potential recovery prior to pandemic decline
- COVID extended the decline to be longer than any on this record

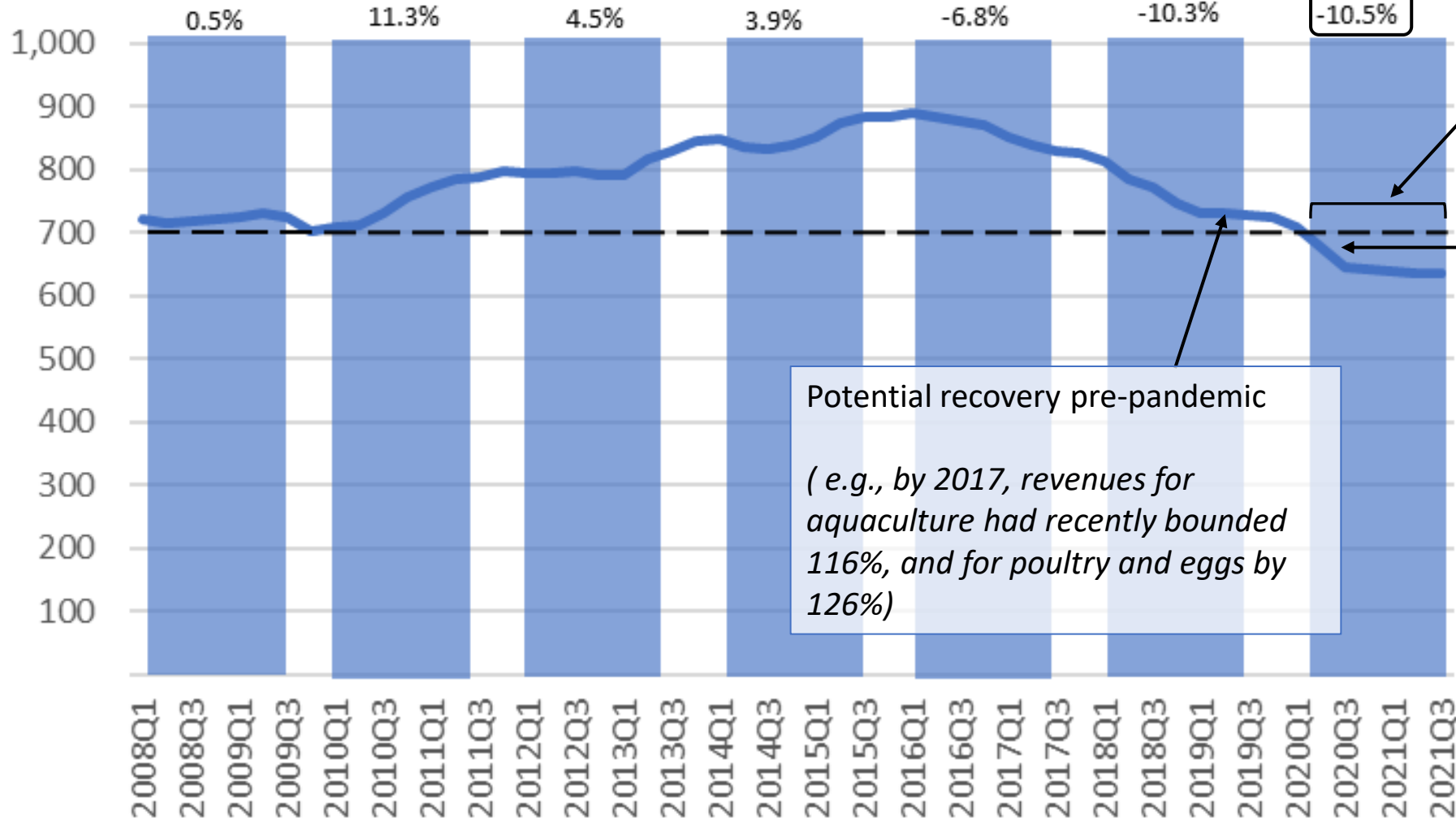
# Crop Production



Q1-2020 to Q3 2021:  
 ↓10.7% (*meets threshold*)

- Decline in crop production jobs is calculated from the peak in the Q1-2020 to Q3-2021 period
- Job losses suspended until the end of the growing season
- With crops in the ground, farms retained workforce through harvest, an expected lag in the jobs dynamics for this sector

# Animal Production and Aquaculture *(meets threshold)*



Deeper losses than anytime in last 13 years

a precipitous loss from 709 to 745 workers over two quarters in mid-2020.

Potential recovery pre-pandemic  
*( e.g., by 2017, revenues for aquaculture had recently bounded 116%, and for poultry and eggs by 126%)*

- Jobs losses in the animal and aquaculture production sector stifled rebounding growth
- COVID pushed the losses below the 700 mark, lower than ever seen in this record