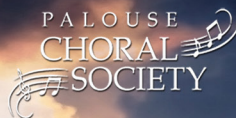




WASHINGTON STATE UNIVERSITY  
School of Music



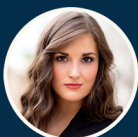
# *A Classical Collaboration*

**THURSDAY  
APRIL 20 | 7:30PM**

**A CLASSICAL COLLABORATION**  
PCS WITH WSU CHOIRS & ORCHESTRA COLLABORATION  
**HAYDN'S "MASS FOR TROUBLED TIMES"**



Alisa Toy  
Soprano



Michelle Lange  
Soprano



Matthew Myers  
Tenor



Aaron Agulay  
Baritone

**BRYAN HALL, 605 VETERANS WAY,  
WASHINGTON STATE UNIVERSITY, PULLMAN, WA 99163  
MUSIC.WSU.EDU | PALOUSECHORALSOCIETY.ORG**



WASHINGTON STATE UNIVERSITY  
**School of Music**



# WSU Choirs, WSU Orchestra & Palouse Choral Society

**Dr. Dean Luethi**  
 WSU Director of Choral  
 Activities

**Dr. Matthew Myers**  
 PCS Artistic Director  
 WSU Associate Director of  
 Choral Activities

**Dr. Danh Pham**  
 WSU Director of Bands and  
 Symphony Orchestra

**Elena Panchenko**  
 Pianist

*present*

# *A Classical Collaboration*

## Program Notes, Texts & Translations

Please use your phone's camera to scan this QR code and see a digital copy of the program notes, texts and translations.  
 Limited paper copies are located near the programs.  
<https://tinyurl.com/5c6ybwpb>



## Palouse Choral Society

I. "Dixit Dominus" from *Dixit Dominus*.....**Marianna Martines**  
 (1744-1812)

## WSU University Singers

"Chantons celebrons notre dame" from *L'Amant Anonyme*.....**Joseph Bologne,**  
**Chevalier de Saint-Georges**  
 (1745-99)  
**arr. Matthew Myers**  
 (b. 1986)

## WSU Treble Choir

I. "Kyrie" from *Missa St. Aloysii* .....**Johann Michael Haydn**  
*Kayla Mommsen, Soprano I* (1737-1806)  
*America Hoxeng, Soprano II*  
*Katlyn Cook, Alto* **ed. Michael Cleveland**  
 (1937-2016)

# WSU Concert Choir

---

*A Dirge On the Death of Lord Nelson* ..... **Anonymous**  
*Aaron Agulay, reader*

*Alleluja Canon* ..... **Wolfgang Amadeus Mozart**  
(1756-1791)

## Brief Intermission

---

## Combined Ensembles

---

*Missa in Angustiis (Lord Nelson Mass)* ..... **Franz Joseph Haydn**  
*Alisa Toy, soprano*  
*Dr. Michelle Lange, soprano*  
*Dr. Matthew Myers, tenor*  
*Dr. Aaron Agulay, baritone*  
(1732-1809)

- I. Kyrie
- II. Gloria
- III. Credo
- IV. Sanctus
- V. Benedictus
- VI. Agnus Dei

*Te Deum* ..... **Franz Joseph Haydn**

## Biographies

---

**Dr. Dean Luethi | *Conductor***



Dr. Dean Luethi serves as the Director of Choral Activities, Professor, and former Director of the School of Music at Washington State University. He received degrees from the University of Wisconsin – Green Bay, University of South Florida in Tampa, and University of Illinois – Urbana/Champaign. Before pursuing advanced degrees, Dean was a high/middle school choir and musical theatre director in the Green Bay area and performed in professional and amateur theater productions in the region.

Known for his work as a choral pedagogue, Dean has presented research, workshops, or conducted choirs at regional, national, and international festivals, conferences, and competitions in the US, India, China, Cuba, Canada, Austria, Poland, and Germany. He is published in the *Choral Journal* and *Music Educators Journal* and his books, *A Quick Start Guide to Choral Singing* and *Aligning Voices: Exercises to Build Choral Musicianship*, are available through GIA Publications. Dean has served as Chair of the National Association for Music Education Council for Choral Education, is the former College and University Repertoire Chair for

Washington State's chapter of the American Choral Director's Association (ACDA), and currently serves as College and University Student Activities Coordinator for NW-ACDA.

Dean lives with his wife, Ruth Boden, in Pullman, WA. In his free time Dean enjoys amateur photography, woodworking, and spending time with their two cats.

### **Dr. Matthew Myers | *Conductor, Tenor***



Dr. Matthew Myers serves as associate director of choral activities and assistant professor of choral music education at Washington State University. He conducts the University Singers and Treble Choir and teaches courses in music education methods and conducting. He serves as Artistic Director of the Palouse Choral Society and co-host of the Choir Fam Podcast.

He earned his DMA in choral conducting at Louisiana State University, his master's degree in choral conducting at Northern Arizona University, and his bachelor's degree in vocal performance and music education at Luther College. After completing his degree at Luther, he taught grades 6-12 choir at The American International School of Muscat in Oman. For the following five years, he worked as director of choirs and musical theatre at Boylan Catholic High School in Rockford, Illinois. In addition to conducting five choirs, he taught AP music theory, class piano, and critical thinking and coordinated a middle school choral program at four of Boylan's constituent grade schools. He has served as conductor of the NAU Men's Chorale and Chamber Singers, the LSU Chamber Singers, the Master Chorale of Flagstaff, and the Flagstaff Youth Chorale and has held church music positions in Iowa, Illinois, Louisiana, and Alabama. Prior to his time at WSU, Dr. Myers taught at the University of Alabama, where he conducted two choirs and taught courses in music appreciation, choral literature, vocal pedagogy, and diction. He is a frequent choral clinician, guest conductor, presenter, and adjudicator. Recent engagements include conducting the WSU Treble Choir at NAFME's Northwest Division Conference in Bellevue, WA; presenting at the NAFME National Conference in Washington, DC; and conducting the Idaho ACDA Middle School All-State Chorus in Pocatello, ID.

He has sung professionally with Red Shift, Coro Vocati, the Sedona Academy of Chamber Singers, and Elysian Voices, and he has also performed the tenor solos in works such as Bach's *Christ lag in Todensbanden*, Vaughan Williams's *Serenade to Music*, Bernstein's *Mass*, Johnson's *Considering Matthew Shepard*, and Handel's *Messiah*.

### **Dr. Danh Pham | *Conductor***



Dr. Danh Pham is Conductor of the WSU Symphony Orchestra, and Director of Bands at Washington State University. In addition to directing the WSU Symphony Orchestra and Symphonic Wind Ensemble, he conducts the WSU Opera and Musical Theatre, and teaches Instrumental Conducting and Symphonic Literature courses. He also conducts the Washington Idaho Symphony and Coeur d'Alene Symphony Orchestra.

Dr. Pham has appeared as a guest conductor and clinician for several international ensembles. He most recently served as conductor-in-residence at the Wuhan Conservatory of Music

and Huazhong University in Central China where he taught masterclasses and conducted the Symphony Orchestra and Wind Symphony in concert. He has also appeared with the Guang Xi Symphony Orchestra (Nanning, China) in the Gala Opening Concert for the China-ASEAN (Association of Southeast Asian Nations) New Music Week. Other international organizations include the National Ballet and Opera Orchestra in Hanoi, Vietnam, the Saigon Wind Ensemble, as part of a subscription series for the Saigon Philharmonic Orchestra that was hosted at the Ho Chi Minh Conservatory of Music, and the National Academy of Music in Northern Vietnam. At home, he has conducted professional and honor groups throughout the Pacific Northwest, American Southwest, Texas, and Hawaii. He has conducted the Palouse Chamber Players, the Pan-Pacific Ensemble, and the Palouse Brass Ensemble. In 2018, he makes his debut with the Coeur D'Alene Symphony Orchestra (USA) and the Hubei Symphony Orchestra (Central China). His own groups have appeared at the Western International Band Clinic, the MENC Biennial Northwest Conference, the Oregon Music Educators Association State Conference, and the National Association of Teachers of Singing (NATS) Southwest Convention.

Dr. Pham serves on the Collegiate Advisory Board for the Western International Band Clinic, where he has conducted their Intercollegiate Honor Band on three occasions. Dr. Pham serves as a contributing Research Associate for the Teaching Music Through Performance in Band series released by GIA Publications, and has presented at the Washington Music Educators State Conference. He has also served as Producer and Editor for solo compact disc recordings that have been released by Albany and Emeritus Records.

Originally from Honolulu, Hawaii, he received his degrees from DePauw University, Indiana University, and the University of Oklahoma. His conducting mentors include Ray Cramer, Stephen Pratt, and William Wakefield. Prior to his appointment at Washington State University, Dr. Pham held similar posts at McMurry University, Western Oregon University, Salem-Keizer Public Schools, and the Beaverton (OR) School District.

### **Alisa Toy | *Soprano, Palouse Choral Society Assistant Director***



A coloratura soprano originally from Alberta, Canada, Alisa holds a MM in Vocal Performance and Choral Conducting from the University of Idaho and a Bachelors degree in Music Education from Mississippi University for Women. She performed in the role of Pamina in Mozart's *The Magic Flute* and Gertrude in *Hänsel and Gretel*. Her soloing opportunities include with the Palouse Choral Society, Washington Idaho Symphony, Mississippi State Symphony Choir and Orchestra, the Columbus Choral Society, and the Greeley Chorale and Philharmonic Orchestra. In addition to the U.S., Alisa soloed in Great Britain, Canada, and Italy including a concert for Pope Benedict XVI with the Rome Symphony Orchestra. She recently won the University of Idaho Concerto/Aria

Competition and placed first in the Southern Region NATS vocal competition while living in Mississippi. Alisa enjoyed teaching K-12 music for several years in public and private schools and is in her 30th year of teaching voice and piano through her private studio, Singingtoy Studio.

## Dr. Michelle Lange | *Soprano*



Award-winning American soprano Michelle Lange (Designer) has been featured in Asia, Europe and the United States. She made her debut with Opera Hong Kong singing Donna Elvira in Mozart's *Don Giovanni*. Dr. Lange's roles include Musetta and Mimì in *La Bohème*, and the leading soprano in *Turandot*, *Così fan tutte*, *The Magic Flute*, *Rigoletto*, *Die Fledermaus*, and *Nozze di Figaro*, where she sang over a hundred performances of Contessa in Vienna, Austria. Dr. Lange is the winner of the Voices of Mississippi Competition in both 2016 and 2017, the 2017 William T. Gower Concerto Competition, and the Madame Rose Palmar-Tenser Competition. Dr. Lange has designed a variety of operas around the world, including *Suor*

*Angelica/Gianni Schicchi*, *Die Zauberflöte*, *The Mikado*, *The Gondoliers*, and several original shows she co-created, including *Cat Tales*, *Seduction*, and *La Donna del Lago*. Dr. Lange is a member of the voice faculty at the University of Idaho Lionel Hampton School of Music.

## Dr. Aaron Agulay | *Baritone*



Dr. Aaron Agulay, baritone, has extensive performing experience with renowned organizations worldwide including Opernhaus Zürich, Konzert Theater Bern, Theater Magdeburg, Central City Opera, Opera Theatre of St. Louis, Banff Performing Arts Center, and Carnegie Hall. As a performer, adjudicator and clinician, Dr. Agulay continues to garner recognition throughout the Pacific Northwest. During the 2022-23 Season, Dr. Agulay made multiple debut appearances as the baritone soloist in Orff's *Carmina Burana* at the Seattle Opera House for the Pacific Northwest Ballet's 50th Anniversary Season as well as at the Fox Theater with the Spokane Symphony. He was also featured with Wenatchee Valley Symphony Orchestra for their

75th Diamond Anniversary Season as a soloist for Handel's *Messiah*. A frequent soloist with The Palouse Choral Society, Dr. Agulay performed last season's world premiere of Kevin Padworski's *Vox Crepusculum*, commissioned in celebration of their 20th anniversary and is excited to return for this collaboration of Haydn's *Lord Nelson Mass*. He will reprise this performance at the Classical Music Festival at Eisenstadt, Austria later this summer.

## Elena Panchenko | *Pianist*



Elena Panchenko, born in Kharkiv, Ukraine, has been working with Palouse Choral Society since 2005. Elena is also the music director at St. James Episcopal Church, an accompanist for Washington State University vocal ensembles, an in-demand collaborative pianist, and a private piano teacher. In her spare time, Elena enjoys singing in a local Klezmer band, Gefiltetrot. She lives in Pullman with her husband Alex, a Washington State University math professor, her mother-in-law Margarita, and Amour, the family dog.

*The WSU Choirs and Symphony Orchestra  
would like to thank the  
WSU School of Music Faculty and Staff  
for their ongoing support:*

**WSU School of Music Faculty and Staff**

---

Aaron Agulay	Assistant Professor, Voice, Voice Pedagogy, Diction
Troy Bennefield	Associate Director of Bands
Dave Bjur	Bass
Scott Blasco	Associate Professor, Theory, Composition, Electronic Music
Ruth Boden	Associate Professor, Cello, Bass, Theory
Austin Cebulski	Lecturer, Saxophone, Jazz Big Band, Big Band II
Chris Dickey	Assistant Professor, Tuba, Euphonium, Graduate Studies
Lindsay Greene	Administrative Assistant
César Haas	Assistant Professor, Jazz and Classical Guitar
Christian Kim	Assistant Professor, Music Business
Martin King	Associate Professor, Horn, Music Education
Keri McCarthy	Director, School of Music; Professor, Oboe, Music History
Jon Melcher	Recording Studio, Technical & Operations Coordinator
Fabio Menchetti	Assistant Professor, Piano
A.J. Miller	Assistant Professor, Assistant Director of Athletic Bands
Sarah Miller	Associate Professor, Trombone, Athletic Bands
Melissa Parkhurst	Associate Professor, Ethnomusicology
Bernadette Reese	Fiscal Tech
Christiano Rodrigues	Assistant Professor, Violin, Viola
Yoon-Wha Roh	Assistant Professor, Piano
Blaine Ross	Performing Arts Program Specialist
Shannon Scott	Associate Professor, Clarinet, Music History
Darryl Singleton	Assistant Professor, Black Music and Social Justice, Jazz
Denise Snider	Assistant Professor, Undergraduate Advisor
Shaun Sorensen	Stage Manager
Jake Svendsen	Assistant Professor, Jazz Piano
Sean Taylor	Music Librarian
Kristine Tims	Business Services Manager
Sophia Tegart	Associate Professor, Flute
David Turnbull	Associate Director, School of Music; Professor, Trumpet
Michelle White	Program Coordinator
Julie Anne Wieck	Associate Professor, Voice, Opera Workshop
Christopher Wilson	Assistant Professor, Percussion, Athletic Bands
Jacqueline Wilson	Assistant Professor, Bassoon, Music Theory
Yii Kah Hoe	Fulbright Scholar, Composition

*Thank you to the Bryan Hall Theatre Stage Crew!*

# WSU Fall Ensemble Auditions

---

We welcome you to join a music ensemble for the Fall semester!

Auditioned and non-auditioned ensembles are available to serve students at all levels of musical experience. Students can register today on MyWSU.

For more information, contact:

Dr. Danh Pham	Band and Orchestra	danh.pham@wsu.edu.
Dr. Dean Luethi	Choir	dean.luethi@wsu.edu
Dr. Julie Anne Wieck	Opera Workshop	jwieck@wsu.edu

## WSU Ensemble Concerts 2023-24

---

### Fall 2023 Semester

Tuesday, September 26	7:30pm	Symphony Orchestra
Wednesday, October 11	7:30pm	Symphonic Wind Ensemble, Symphonic Band
Tuesday, October 17	7:30pm	Jazz Big Bands
Tuesday, October 24	7:30pm	Jazz Combos
Tuesday, October 31	7:30pm	Percussion Ensemble
Friday, November 3	7:30pm	Vocal Extravaganza: Choirs and Opera
Tuesday, November 7	7:30pm	Symphony Orchestra
Thursday, November 16	7:30pm	Opera Workshop
Wednesday, November 29	7:30pm	Symphonic Wind Ensemble, Symphonic Band
Saturday, December 2	2:00pm	Holiday Celebration: Choirs and Orchestra

### Spring 2024 Semester

Tuesday, February 13	7:30pm	Jazz Big Bands
Tuesday, February 20	7:30pm	Symphony Orchestra
Wednesday, February 21	7:30pm	Symphonic Wind Ensemble, Symphonic Band
Thur.-Sat., Feb. 29-Mar. 2		Festival of Contemporary Artists in Music
Thursday, March 7	7:30pm	WSU Choirs
Tuesday, March 26	7:30pm	Percussion Ensemble
Friday, April 5	7:30pm	Opera Workshop
Saturday, April 6	2:00pm	Opera Workshop
Tuesday, April 9	7:30pm	Jazz Ensembles
Wednesday, April 10	7:30pm	Symphonic Wind Ensemble, Symphonic Band
Tuesday, April 16	7:30pm	Symphony Orchestra
Thursday, April 18	7:30pm	WSU Choirs

## WSU University Singers

---

Dr. Matthew Myers, conductor  
Elena Panchenko, pianist

### *Soprano*

Tessa Bush  
Sawyer Crist  
Cheyanne Hutchins\*  
Mackenzie Jacobs  
Kelly Lim  
Lacy Sutter

### *Alto*

Hannah Chalom\*  
Aurelia Cromwell

Hannah Fee  
Alainn Fitzgerald  
Kailey Lingo  
Dominiqué Pierre  
Kevauna Reeves  
Lauren Schutt

### *Tenor*

Ryan Brady  
Aiden Bunn  
Steve Davis\*  
Mark Johnson  
Brian Kai Nelson

### *Bass*

Nicolas Dejesus  
Kevin Hudson\*  
Miles Robertson  
Oluwafemi Johnson Sunday  
Rogan Tinsley  
Noah Tyler

\*section leader

## WSU Treble Choir

---

Dr. Matthew Myers, conductor  
Elena Panchenko, pianist

### *Soprano I*

Emily Berry  
Akasha Burgess  
Meg Fritz  
Hazel Gomez  
Hannah Lopardi  
Abigail Moore  
Amy Moore  
Madilyn Murphey  
Renee Roulo  
Elakkiya Saravanan  
Madison Sickels\*  
Rebekah Straka  
Kayden Warwick

### *Soprano II*

Emma Berreth\*  
Rowan Dunn  
Kasandra Fong  
America Hoxeng  
Jordan Isler  
Mackenzie Jacobs  
Savannah Kahl  
Madysen McCarthy\*  
Kayla Mommsen\*  
Carly Ostrem  
Yebsera Pachelli  
Dominiqué Pierre  
Sabrina Radford  
Allison Vanderley  
Ava Whalon

### *Alto*

Daniela Alpire  
Clara Brown  
Hannah Chalom  
Katlyn Cook  
Aurelia Cromwell  
Sidney Gillaspie  
Madison Holdway  
Sarra Jones  
Rylie Linford  
Anahi Marquez Castro  
Elizabeth Marsh  
Ashley Myers\*  
Francesca Poledrelli  
Ailie Turnbull  
Sarah Alexis Walker  
Amabel Zucker

\*section leader

## WSU Concert Choir

---

Dr. Dean Luethi, conductor  
Elena Panchenko, pianist  
Evan Short, graduate assistant

### *Soprano*

Kiana Burt\*  
Emma Haerberle  
Bridget Murphy  
Sarah Nelson  
Hannah Prisco  
Madison Sickels

### *Alto*

Chloe Bagley  
Darya Baker  
Fatima Cadena  
Kendal Clifton  
Madysen McCarthy\*  
Ashley Myers  
Ailie Turnbull

### *Tenor*

Jacob Clement  
Bryan Finley-James  
Corey Gardner\*  
Jason Kochis

Sam Loomis  
Jared Messenger  
Levi Policarpio  
Ian Wright

### *Bass*

Kevin Hudson  
Tsering Jordhen  
Gavin Miller  
Bryson Schelske  
Evan Short  
Parker Smith\*

\*section leader

# WSU Symphony Orchestra

---

Dr. Danh Pham, conductor

## *Violin 1*

Emily Andriano  
T.K. Dart  
Alex Zanas  
Harrison Gaal  
Samuel Song  
Jihye Kim

## *Violin 2*

Alexander Johnson  
Sarah Plummer  
Lindsey Lundgren  
Morgan Pattee  
Zoe Bluhm  
Robin Bond

## *Viola*

Johanna Ludwig  
Zachary Klein

## *Cello*

Jake Russell  
Tyler Suter

## *Bass*

Kennedy Fast  
Maxwell Brayton-Smith  
Sam Boling

## *Flute*

Anthony Kandilaroff  
Kevin Melendez

## *Oboe*

Shawna Creaser  
Steve Davis  
Darya Baker

## *Clarinet*

Marcelo Martinez

## *Bassoon*

Karl Falskow

## *Horn*

Sean Andre  
Michael Brecht  
Orion Stankus  
Nick Yoon

## *Trumpet*

Dean Johnson  
Ashley Swanson

## *Trombone*

Skylar McDavid, principal  
Tristan Donaldson  
Charlie Holmes,  
bass trombone

## *Percussion*

Dustyn Geigle  
Houston Fleischman

## *Organ*

Elena Panchenko

---

## Palouse Choral Society Board of Directors, Volunteer Managers & Staff

---

### **Executive Committee**

Susan Beamer, *President*  
Anneliese Zook, *President-Elect*  
Carole Wells, *Vice President*  
Gillian Sharma, *Secretary*  
Crystal Crossler, *Treasurer*

### **Chorale Member Representatives**

Kerry Darnall  
Conny Kirchhoff

### **Community Members**

Jason Abrams

### **Children's Choir Representative**

Deborah Collins

### **Volunteer Leaders**

Debbie Brudie, *Box Office Manager*  
Debbie Brudie, *Database Manager*  
Debbie Brudie, *Receipts Treasurer*  
Heather Dixon, *House Manager*  
Miranda Kling, *Program Ad Manager*  
Ashley Smith, *Graphics Assistant*  
Natalie Wannamaker, *Children's Choir Attire*

### **Staff**

Janice O'Toole, *Executive Director*

Looking for a way to make a difference?  
Consider volunteering for PCS!



We have open board and  
team partner positions.  
Ask us about them!

Contact Anneliese:  
[president-elect@palousechoralsociety2.org](mailto:president-elect@palousechoralsociety2.org)

# Palouse Choral Society

---

Dr. Matthew Myers, conductor  
Alisa Toy, assistant conductor  
Elena Panchenko, pianist

## *Soprano*

Deborah Collins  
Elizabeth Collins  
Niki Frishman  
Meredyth Goodwin  
Ellen Grover-Fricks  
Lynda Hamilton  
Karin Herbert  
Tricia James  
Monique Lillard  
Lauren Ray  
Tabitha Reinhardt  
Victoria Sundin  
Alisa Toy\*  
Becky Weber  
Janice Willard

## *Alto*

Destiny Barker  
Jennifer Bledsoe  
Crystal Crossler

Kerry Darnall  
Chris Dopke  
Allison Drennen  
Jill Freuden\*  
Kristina Gaumnitz  
Elena Gentry  
Judie Hanley  
Amy Hedges  
Conny Kirchhoff  
Miranda Kling  
Holly McCollister  
Shelley McGuire  
Gail Miller  
Traci Morales  
Mac Murphy  
Maureen O'Callaghan  
Stephanie Sant  
Ashley Smith  
Lena Udekwu  
Karen Weathermon  
Carole Wells  
Anneliese Zook

## *Tenor*

Kevin Brackney  
Dexter Jones  
Luxien Landrus  
Bryan Lewis  
Scott Milner\*  
Roderick Sprague  
Bradyn Toy  
Royal Toy

## *Bass*

Allen Alstad  
Jason Ballester  
Brian Collins\*  
Keith Collins  
Jay Gentry  
Julian Gossard  
Glenn Johnson  
Eric Nilsson  
Ray Wallace  
Leonard West

\*section leader

# Palouse Choral Society Members in Spirit

---

*Remembering our  
singers who have passed.*



Leo Ames	Elinor Butcher	Liz McNeal
Walter Asbe	Marcia Cook	Charles Probasco
Duane Baker	Kathy Curley	Jim Reece
Ken Baker	Jean Jones DeLong	Stan Shepard
Jan Brandt	John Jordan	Gerd Steckel
John Brewer	Jack Kelly	Dean Vanderwall
	Karen Kelly	Ruth Vanderwall
	George LeBar	
	Helen Lombard	

*Your lives "go on in endless song"...*

# Palouse Choral Society Donors

---

## *Conductor's Circle*

Beatriz & Edmund Schweitzer

## *Concert Sponsor*

Bill & Joan Wykoff

## *Concert Partners*

Elizabeth Chilton & Michael

Sugerman

Deborah & Brian Collins

The Hauser Family Charitable  
Fund

Carl & Shirley Koenen\*

Miho Nam & Sung Ahn

Joanne Reece & Bill Voxman

Carleton & Rosemary Waldrop

## *Benefactors*

Douglas & Linda Adams

Jennifer & Jason Bledsoe

John & Judy Croskey

Jill & Shaun Freuden

Glenn & Kathryn Johnson

Kent & Terry Keller

Richard & Nancy Mack

Shelley and Mark McGuire

Bruce & Kathy Pitman

Garth & Nancy Sasser

## *Patrons*

Debbie Brudie\*

Mary Carloye

Keith & Beth Collins

Ruth Funabiki

Edwin Garretson & Steven  
Watson

Eric Nilsson & Janice Willard

Janice O'Toole

Jim Reece & Pat Hine

Reybert and Norma Reece\*

Gillian & Sunil Sharma

Paul Ely Smith

Steven & Ann Swannack

## *Supporters*

Allen Alstad

Gracen Atkinson

Alice & Erol Barbut\*

Susan Beamer

Andrea Beckett

Susan Bohm

John Bolles

Kevin & Elisabeth Brackney

Bill Caldwell

Laurie Caraher\*

John Chapman

Zoe Cooley\*

Crystal & Robert Crossler

Kerry Darnall

Anjuli Dodhia

Richard Domey & Diane

Gillespie

Chris & Matt Dopke

Allison Drennen

Sandy Field

Natalie Fisher

Pat Fuerst & Patricia Jessup

Jay & Elena Gentry

Meredyth Goodwin

Judie Hanley

Genevieve Hill

Jack & Jan Keller

Conny & Helmut Kirchhoff

Ellen Kittell

Paul Klemme

Miranda Kling

Stanton & Lucille Linden

Holly McCollister & Leonard  
West

Becky Miller

Scott Milner & Miriam Hertz

Marsha & Robert Olson

Dan Pierce

Tabitha Reinhardt

Philip Sitze

David & Kathy Spencer

Nancy Sprague & Bill Phillips\*

Julie Thomas

Rebecca Tovey

Bradyn Toy

Alisa Toy

Lena Udekwu

Carole Wells

Maury & Susie Wiese

Gary Williams/Joy Passanante\*

Lynn & Kay Youngblood\*

The Warren Family Charitable  
Trust

## *Friends*

Mary Baker

Bri Baltes

Ann Baltes, Bill and Grace

Rosholt

Lauren Barmore

Nancy Beebe

Eric Bennett

Gerald & Mary Berthiaume

Trish Blehm

Karl & MaryAnn Boehmke

Jason & Amy Chase

Ivy Dickinson

Christine Dixon\*

Charles Eckert

Jeremy and Jennifer Erickson

Pat Flansburg

Kristina Gaumnitz

Herbert

Elizabeth & John Hobbs

Michael Irvin

Tricia James

Jaime Jovanovich-Walker

Meg Kelley\*

Kelly Kennaly

Luxien Landrus

Cynthia Magnuson

Gail Miller

Phil & Charlotte Mohan

Mac Murphy

Matthew Myers

Jeff Nelson

Hayley Noble

Cathy & Jack Porter\*

Merton Pubols

Drs. Dennis and Carol Ohrtman\*

Mary Ramierez

Martin Rathbun\*

Patricia Rathmann

Kristina Rollins

Stephanie Sant

Don & Nancy Shrope

Troy Sprenke

Jessica Stanley

Sara Thompson

Royal Toy

Kayla Toy

Jennifer Wallace

Cathryn Willmes\*

Anna Zook

\*In Memory of Jim Reece

## *Dedicated Grants & Donations*

Crescendo Community

Chorus through The Estate  
of Richard & Anne Turner

The Idaho Commission  
on the Arts

Washington State University

The John T. Brewer

Designated Fund at Innovia  
Foundation

## *Endowment Fund Donations*

Jennifer & Bob Coleman

# Palouse Choral Society Volunteer Tributes

---

Each year PCS welcomes new board members and bids farewell to those who have given generously of their time, talent, caring and intelligence. Please help us in thanking these members for their service to PCS.

## **Jason Abrams - Community Representative - 2021 - 2023**

Jason was nominated by one of our members and graciously accepted in 2021 as we cautiously proceeded with our first post quarantine season. A vocalist himself, Jason brought an understanding of a vocalist's experience and used that knowledge to help PCS update some of the organization's policies paving the way for inclusivity. With his contagious enthusiasm, Jason worked with the PCS marketing team as they organized and enhanced their outreach and marketing efforts. In many ways, it feels like Jason just got started and we are sorry to see him go. Jason, you have our best wishes and deep gratitude!

## **Susan Beamer - President - 2019 - 2023**

A long time member, Susan accepted the responsibility of overseeing Palouse Choral Society in 2019. The job of president always holds many surprises and Susan's term was no different. She found herself at the helm as we navigated 18 months of hiatus during the COVID-19 pandemic and gingerly launched our 21-22 post quarantine season. As if that wasn't enough challenge, Susan also saw us bid farewell to Artistic Director Paul Thompson, hire two guest conductors, and hire Artistic Director Matthew Myers. We are grateful for your dedication and service as president, Susan. Thank you!

## **Christine Dopke - Anything you need volunteer - 2013 - 2023**

While Christine never stood for office, she answered uncountable calls for help in her 10 year membership. When we need letter stuffing, she brings herself and her knowledge of how to prevent repetitive motion injuries. Riser crew calls, she's there. When the Thank you letters needed a steward, she raised her hand. Each time we need posters put up, she takes a bunch and makes sure other members get them too. And, if that's not enough, Christine is always ready with a smile and words of encouragement. One might say that she represents the best of our membership. Christine, we are going to miss you SO much! Thank you for ALL of the answered calls. May your new adventures be as fabulous as you are!

## **Conny Kirchhoff - Chorale Representative - 2019 - 2023**

Conny answered the call and agreed to be elected as Chorale Representative in 2019. Her astute observation and steadfast guidance has served PCS and its members well. Like Susan, she found herself serving during the pandemic hiatus, working with her fellow board members to ensure that PCS stayed afloat. This past year, Conny has chaired the Marketing committee, organizing and considerably enhancing the organization's marketing efforts. She says that although she's ready to step away from the board, she's happy to continue working with the marketing team and we're very happy to hear that! Thank you, Conny, for all of your time and hard work on our behalf!



*“Those who can, do. Those who can do more, volunteer.” — Author Unknown*

If you would like to become part of the Palouse Choral Society's volunteer efforts, please email [president-elect@palousechoralsociety2.org](mailto:president-elect@palousechoralsociety2.org)

## Palouse Choral Society Volunteer Tribute - In Memory



### Jim Reece

Man of Many PCS Hats

Volunteer from 1992 - 2023

Palouse Choral Society and the world lost a kind, gentle, giving soul with the passing of Jim Reece last month. Jim began singing with the (then) Washington Idaho Symphony Chorale in 1992. During the next 31 years he would make the organization better through the many ways that he volunteered and by his steadfast membership, rarely missing a rehearsal or concert. He helped get the word

out about PCS by making it his mission to blanket Moscow with posters and singing in the Christmas Carolers and other “run out” gigs. Always humble, he would say, “Well, I’m not sure I’m the right one, but if you need me, I’m happy to do it.”

In the early days of the organization’s “stand alone” incorporation, Jim graciously accepted the position of treasurer, serving multiple terms and carrying out the duties with the quiet precision that was his signature of service. Recognizing that just because he was filling other roles, it didn’t mean there weren’t other ways in which he could help, he frequently answered the calls for volunteers. From hauling risers to stuffing letters to managing program ads to handling tickets, Jim selflessly pitched in. For the last several years, Jim has served as our Receipts Treasurer. True to form, the deposit he planned to make the next day was ready to go, always efficient.

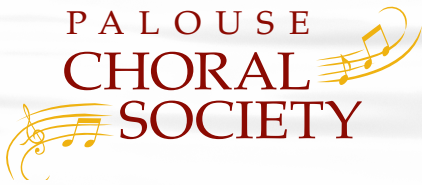
Jim, you gave so much and we are so grateful. To say that you’ll be missed is a gross understatement. Now, as your “life goes on, in endless song”, we will honor your memory by endeavoring to follow your example. Thank you.

More information about Jim Reece’s remarkable life can be found in his obituary by following this URL [tinyurl.com/4uejnyhr](https://tinyurl.com/4uejnyhr) or scanning this QR code.



# Palouse Choral Society Second Annual Composition Contest

---



The Palouse Choral Society eagerly announces its composition contest as part of its goal to perform new music and champion the works of emerging composers.

**The Palouse Choral Society will premiere the winning composition in our Fall 2023 concert season: either in October or December.**

**Eligibility:** All composers are eligible regardless of educational level or past experience.

**Award:** The winning composer will receive a \$500 honorarium.

**Submission Details:** Submit a PDF score via email to [artisticdirector@palousechoralsociety2.org](mailto:artisticdirector@palousechoralsociety2.org). Title your email as "PCS Composition Contest Submission." The score should be engraved using music notation software (Finale, Sibelius, NoteFlight, etc.). You may include an MP3 recording (MIDI or live musicians), but this is not required.

## **Parameters:**

*Duration* - The work should last 2-4 minutes in total. (Multimovement works which fit within these parameters are acceptable.)

*Text* - The text must be original or in the public domain. Liturgical texts are acceptable. If you use a copyrighted text, you must provide a letter of permission from the copyright owner. The piece may be in any language, but texts in languages aside from English, French, German, Italian, Latin, Spanish, or Ukrainian should include a pronunciation guide with IPA.

*Voicing* - SATB choir. Some divisi is acceptable, especially in soprano/alto parts, but no more than SSAATTBB. Short solos are acceptable, but do not feature a soloist for the entire work.

*Instrumentation* - A cappella or with piano. You may include one obbligato instrument. If the work is a cappella, please include a piano reduction in the score.

*Composition Date* - The work should have been composed in the past five years.

*Publication* - The work must not yet be published.

*Originality* - The work should be an original composition, not an arrangement.

*Performance History* - The work must not have been performed publicly. The work will receive its world premiere in 2023 by the Palouse Choral Society.

*Limits on Entries* - Composers may submit up to two works per year.

**Deadline:** June 1, 2023

*Required:* PDF score of work.

*Required (if applicable):* Permission letter from text's copyright owner, pronunciation guide.

*Optional:* Recording of work.

Winners will be announced by July 1, 2023. If no entries are suitable, the Chorale reserves the right not to select a winner. Second place and third place may be recognized, but only the winning composition will be performed.

**Evaluation:** A panel of 2 guest judges and the PCS artistic director will review all submissions.

**Copyright:** The Palouse Choral Society will retain unlimited performance and mechanical rights to performances and recordings made by the Palouse Choral Society. The composer will retain all other copy, performance, and mechanical rights to their works.

# *Announcing*

## Palouse Choral Society's

2023-2024 Season

### **John Brewer Vocal Jubilee**

*Featuring some of our area's finest vocalists.*

Sunday, September 24, 2023 - 4:00pm

### **Concert 1**

*Chorale, Chamber Choir, & Children's Choir*

Sunday, October 29, 2023 - 4:00pm

### **Concert 2**

*Handel's Messiah - A Collaboration between  
Palouse Choral Society & Washington Idaho Symphony*

Saturday, December 9, 2023 - 7:30pm

Sunday, December 10, 2023 - 4:00pm

### **Concert 3**

*Chorale, Chamber Choir, & Children's Choir*

*Featuring a Dessert Reception*

Saturday, February 17, 2024 - 7:30pm

Sunday, February 18, 2024 - 4:00pm

### **Concert 4**

*Chorale & Chamber Choir*

Sunday, April 28, 2024 - 4:00pm

*Save the dates!  
Look for our pre-season sale in  
July at [palousechoralsociety.org](http://palousechoralsociety.org)*



WASHINGTON STATE UNIVERSITY  
**School of Music**



## WSU Choirs, WSU Orchestra & Palouse Choral Society

# *A Classical Collaboration*

### Program Notes, Texts & Translations

---

Please use your phone's camera to scan this QR code and see a digital copy of the program notes, texts and translations.

Limited paper copies are located near the programs.

[URL HERE](#)

### Palouse Choral Society

---

#### I. "Dixit Dominus" from *Dixit Dominus*.....Marianna Martines (1744-1812)

Born in Vienna in 1744, **Marianna Martines** is among the most significant women composers of the Classical Period. She grew up in an apartment building occupied by a princess of the Esterházy family, a wealthy family known best today for their patronage of music, and the composers Nicola Porpora and Joseph Haydn. Perhaps even more significant, her family's close family friend Pietro Metastasio, the most celebrated librettist of the opera seria genre, lived with the Martines family in their apartment. The connections she made from her home helped to advance her success as a singer, keyboardist, and composer. She studied keyboard with Haydn and voice with Porpora (while Haydn served as the harpsichordist for her lessons). Metastasio ensured that her education far surpassed what was available to most young women at the time; she spoke Italian, German, French, and English. She was the first woman to be admitted to the Accademia Filarmonica in Bologna. She developed a friendship with Wolfgang Amadeus Mozart, who wrote four-hand piano sonatas to perform alongside her. Her extant compositions include many solo vocal works, four masses, two oratorios, and one symphony. Though she was highly active in the music community in Vienna, she never held a position at a church or in a court due to the social norms for women at the time. In the 1790s she started a singing school within her home, and she continued teaching, composing, and performing until her death in 1812. Her 1774 setting of the popular Psalm 110 text *Dixit Dominus* includes seven movements. Scored for SSATB choir, five soloists, and orchestra, the work explores antiphonal contrast as Martines pairs different voices together to create a varied tonal palette. *This evening's performance will include the Austro-Germanic pronunciation of all Greek and Latin texts for a historically informed performance.*

**Sung in Latin**

Dixit Dominus Domino meo:  
 Sede a dextris meis,  
 donec ponem inimicos tuos  
 scabellum pedum tuorum.

**English Translation**

The Lord said unto my Lord,  
 Sit thou at my right hand,  
 until I make your enemies  
 your footstool.

## WSU University Singers

---

**“Chantons celebrons notre dame” from *L’Amant Anonyme*..... Joseph Bologne,  
 Chevalier de Saint-Georges (1745-99)  
 arr. Matthew Myers (b. 1986)**

**Joseph Bologne, Chevalier de Saint-Georges** was born on the Caribbean island of Guadeloupe in 1745. His father George was a nobleman and planter in Guadeloupe. Joseph’s mother Nanon was an enslaved woman born in Senegal and forced to migrate to the French West Indies. The family moved to Paris in 1753, and Saint-Georges began to work on his physical fitness. He became known as the best fencer in Europe and was made a gendarme and chevalier to the king. His early musical training is unknown, but it is likely that he studied with François-Joseph Gossec. As a virtuoso violinist, he became active in Gossec’s orchestra Le Concert des Amateurs, which developed a reputation as one of the finest ensembles in Europe. He joined the orchestra in 1769, became concertmaster in 1771, and became conductor in 1773. In 1776 he was proposed as the new music director of the Paris Opéra, but the famous divas of the organization complained to Queen Marie Antoinette that it would be degrading to perform under the baton of a mulatto. He did not receive the job but instead became music director of the Duke of Orléans’s private theatre, where his opera *L’amant anonyme* was premiered in 1780. By 1785, he stopped composing instrumental works and focused his attention on operas, though as a conductor he still commissioned such celebrated instrumental works as Joseph Haydn’s six Paris symphonies. Active in the French Revolution and inspired by its call for human rights, he was imprisoned from 1793-95 during the Reign of Terror. He died in 1799 with the legacy as the first composer of African descent to achieve widespread musical renown in Europe. *L’amant anonyme* is his only opera to survive in full. It is a love triangle between two characters: young widow Léontine, her friend Valcour, and Léontine’s secret admirer (who is actually Valcour). The chorus “Chantons celebrons notre dame” occurs at the wedding of Jeannette and Colin, two supporting characters. The chorus is in ABA form, with soprano and tenor duet in the B section. This arrangement adapts the duet for a choral setting.

**Sung in French**

Chantons célébrons notre dame  
 Aimer est un plaisir bien doux.  
 Qu’elle lise au fond de notre âme  
 Combien nous la chérissons tous.

J’ai moi Colin  
 et moi Jeanette  
 Mais trop peu riche  
 et moi sans bien  
 Sans une bonté si parfaite notre amour  
 n’eût servi de rien.

Ce mariage est votre ouvrage  
 Il fait tout notre bonheur.  
 Que notre hommage soit l’heureux gage  
 De notre sincère ardeur

**English Translation**

Let’s celebrate our lady.  
 Loving is a sweet pleasure.  
 Let it read deep in our soul  
 how much we all cherish it.

I have Colin  
 and I have Jeanette  
 but too few riches  
 and me without goodness.  
 Without such perfect goodness  
 Our love would have been of no use.

This marriage is your work.  
 It makes us happy.  
 May our homage be the happy pledge  
 From our sincere ardor.

## WSU Treble Choir

---

- I. “Kyrie” from *Missa St. Aloysii*** ..... **Johann Michael Haydn**  
*Kayla Mommsen, Soprano I* (1737-1806)  
*America Hoxeng, Soprano II* **ed. Michael Cleveland**  
*Katlyn Cook, Alto* (1937-2016)

**Michael Haydn** was born in 1737 in Rohrau, Austria, the sixth child out of twelve. He began singing with his brother Joseph in the choir at St. Stephen’s Cathedral in Vienna. He studied at the local Jesuit seminary, then took music positions in Romania and Salzburg. In 1762, he took over for Mozart as court organist in Salzburg, where he remained for 44 years before his death in 1806. Most of the work he composed was sacred: he composed about 33 Masses, two Requiems, six oratorios, five Te Deums, four hundred motets, and much more. His early Masses are longer and feature melismatic solos and Renaissance-influenced counterpoint. The masses he wrote after he arrived in Salzburg were shorter and less florid in response to Emperor Joseph II’s decree that church music should not be so long as to resemble a performance. *Missa St. Aloysii*, composed in 1777, maintains the brevity of the Masses of the time, yet it still features some brief melismatic passages for both soloists and choral sections. While most of his works are for SATB choir, the *Missa St. Aloysii* features SSA choir and SSA soloists. He returned to this treble choir voicing for one of his final Masses, *Missa Sancti Leopoldi*, composed in 1805, the year before his death.

### **Sung in Greek**

Kyrie eleison.  
Christe eleison.  
Kyrie eleison.

### **English Translation**

Lord, have mercy.  
Christ, have mercy.  
Lord, have mercy.

## WSU Concert Choir

---

- A Dirge On the Death of Lord Nelson*** ..... **Anonymous**  
*Aaron Agulay, reader*

- Alleluja Canon*** ..... **Wolfgang Amadeus Mozart**

**Wolfgang Amadeus Mozart**, one of the most prolific and original melodists of the Austrian Classical Era. Born in Salzburg in 1756, he began music studies quite early in his life. His father, Leopold, was a composer and violinist. He taught keyboard lessons to Mozart’s elder sister, Nannerl, as the young musician looked on and immersed himself in the music. He began playing the keyboard at age 3, composing by age 5, and performing throughout Europe at age 6. In 1781, Mozart moved to Vienna, the center of classical music culture in the region. He met Joseph Haydn around 1784, and the elder composer took him under his wing as a mentee and championed his compositional genius. The two often played in string quartets together along with composers Johann Baptist Vanhal and Carl Ditters von Dittersdorf. Mozart composed his *Alleluja Canon* in 1788, the year after his opera *Don Giovanni* had its premiere. Around this time, his financial situation and physical health began to decline. In the final year of his life, he maintained high productivity; 1791 was the year of *The Magic Flute*, his motet *Ave Verum Corpus*, his unfinished *Requiem*, and his untimely death.

## Brief Intermission

---

## Combined Ensembles

---

*Missa in Angustiis (Lord Nelson Mass)* ..... **Franz Joseph Haydn**

*Alisa Toy, soprano*

(1732-1809)

*Dr. Michelle Lange, soprano*

*Dr. Matthew Myers, tenor*

*Dr. Aaron Agulay, baritone*

Like his brother Michael, **Joseph Haydn** was born in Rohrau. He was the second child in his family of twelve children. He studied violin, organ, and harpsichord from an early age and began singing in the choir at Vienna's St. Stephen's Cathedral at age eight. After his voice changed, he left the cathedral choir and began freelancing as a teacher, performer, and composer. At age 28, he accepted a position he would hold for the rest of his life – Kapellmeister to the Esterházy family in Eisenstadt, just across the Austrian border in Hungary. He served three generations of the royal family over a total of 49 years and composing operas, symphonies, chamber music, and sacred music for the court. The second of his three patrons was less of a music aficionado, so in that time Haydn was able to travel extensively, including a trip in 1791 to London, where he was inspired to write an opera and six of his 106 symphonies. While in London, he heard Handel's oratorios *Messiah* and *Israel in Egypt*, which inspired him to compose his own oratorio *The Creation* (1798) and set it in English.

As one of the foremost sacred music composers of the Classical Era, Haydn offered extensive contributions to the choral-orchestral Mass genre, including at least 14 Mass settings. His early Masses often include orchestration for a Viennese trio: two violins and cello as well as organ continuo. Haydn's middle Masses reflect reforms in the church, following decrees from Emperor Joseph II which called for a decrease in the amount of duration of choral music in the Mass. This resulted in Haydn's technique of "telescoping" text, shown most often in Credo movements; in order to speed through the texts of the Mass, he would assign different texts to various voice parts to be sung simultaneously. Haydn's six late Masses, composed between 1796 and 1802, are less conservative in duration and quite symphonic in scope. These Masses reflect the large-scale symphonies which he heard on his visits to London and thus incorporate major classical forms such as sonata-allegro, theme and variations, and rondo. He wrote his *Missa in angustiis* (Mass for Troubled Times) in 1798, after Austria had recently lost four major battles to Napoleon's armies. The work is often referred to by its nickname, the *Lord Nelson Mass*, because shortly before the Mass's premiere, British Admiral Horatio Nelson led British forces to a decisive victory over Napoleon's troops. Lord Nelson himself visited Haydn's patrons, the Esterházy family, at their Hungarian estate in 1800, and he likely heard the work performed there.

All of Haydn's Masses include six movements from the Mass Ordinary, or the texts that remain standard for each Mass in the church year. The movements feature the solo quartet extensively, but the soloists are brought out of the choral-orchestral texture in a back-and-forth interplay rather than being featured for entire movements or large sections of text. The Kyrie's despairing descending octave motif reflects the troubled times in which the contemporary performers were living and their questions as to whether Austria would survive Napoleon's advances. The Gloria movement is a jubilant celebration of the angels' message to the shepherds announcing the birth of Christ. The Credo movement features the lengthy text in full without any telescoping, but Haydn's approach includes a less independent treatment of each vocal part: the voices often perform in pairs rather than singing four unique vocal lines. Prior to the Classical Era, it was standard to compose Sanctus and Benedictus texts together in one movement. While in Haydn's time, they were separate movements, they do feature the same musical content in their final "Osanna" sections. The last movement, Agnus Dei, is the only one to

feature the solo quartet in an extensive way on their own. The choir returns to perform the final Dona nobis fugue and also sings some of the only *a cappella* moments of the entire Mass.

Haydn retired from composition in 1803 and returned to Vienna for his final days. His death in 1809 took place during Napoleon's final advances on the city. Mozart's *Requiem* was performed at his funeral.

### I. Kyrie

#### **Sung in Greek**

Kyrie eleison.  
Christe eleison.  
Kyrie eleison.

#### **English Translation**

Lord, have mercy.  
Christ, have mercy.  
Lord, have mercy.

### II. Gloria

#### **Sung in Latin**

Gloria in excelsis Deo  
et in terra pax hominibus bonae voluntatis.  
Laudamus te, benedicimus te, adoramus te,  
glorificamus te.  
Gratias agimus tibi propter magnam gloriam  
tuam.  
Domine Deus, Rex coelestis, Deus Pater  
omnipotens.  
Domine Fili unigenite, Jesu Christe,  
Domine Deus, Agnus Dei, Filius Patris.  
Qui tollis peccata mundi, miserere nobis.  
Qui tollis peccata mundi, suscipe  
deprecationem nostram.  
Qui sedes ad dexteram Patris, miserere nobis.  
Quoniam tu solus sanctus. Tu solus Dominus.  
Tu solus altissimus, Jesu Christe,  
cum Sancto Spiritu in gloria Dei Patris. Amen.

#### **English Translation**

Glory to God in the highest,  
and on earth peace to people of good will.  
We praise you, we bless you, we adore you, we  
glorify you.  
We give you thanks for your great glory.  
Lord God, heavenly King, almighty God and  
Father.  
Lord Jesus Christ, Only Begotten Son, L  
ord God, Lamb of God, Son of the Father,  
you take away the sins of the world, have mercy  
on us;  
you take away the sins of the world, receive our  
prayer;  
you are seated at the right hand of the Father,  
have mercy on us.  
For you alone are the Holy One, you alone are  
the Lord,  
you alone are the Most High, Jesus Christ,  
with the Holy Spirit in the glory of God the  
Father. Amen.

### III. Credo

#### **Sung in Latin**

Sanctus, Sanctus, Sanctus, Dominus Deus  
Sabaoth.  
Pleni sunt coeli et terra gloria tua.  
Hosanna in excelsis.

#### **English Translation**

Holy, holy, holy Lord God of hosts.  
Heaven and earth are full of your glory.  
Hosanna in the highest.

#### IV. Sanctus

##### **Sung in Latin**

Credo in unum Deum, Patrem omnipotentem,  
factorem coeli et terrae

visibilium omnium, et invisibilium.

Et in unum Dominum Jesum Christum,

Filium Dei unigenitum.

Et ex Patre natum ante omni saecula.

Deum de Deo, lumen de lumine, Deum verum  
de Deo vero.

Genitum, non factum, consubstantialem Patri,  
per quem omnia facta sunt.

Qui propter nos homines, et propter nostram  
salutem

descendit de caelis.

Et incarnatus est de Spiritu Sancto

ex Maria Virgine. Et homo factus est.

Crucifixus etiam pro nobis sub Pontio Pilato,  
passus, et sepultus est.

Et resurrexit tertia die, secundum Scripturas.

Et ascendit in caelum, sedet ad dexteram Patris.

Et iterum venturus est cum gloria,

judicare vivos et mortuos,

cujus regni non erit finis.

Et in Spiritum Sanctum Dominum, et  
vivificantem,

qui ex Patre Filioque procedit.

Qui cum Patre, et Filio simul adoratur et  
conglorificatur,

qui locutus est per Prophetas.

Et unam, sanctam, catholicam, et apostolicam  
Ecclesiam.

Confiteor unum baptisma in remissionem  
peccatorum.

Et expecto resurrectionem mortuorum.

Et vitam venturi saeculi. Amen.

#### V. Benedictus

##### **Sung in Latin**

Benedictus qui venit in nomine Domini.

Hosanna in excelsis.

#### VI. Agnus Dei

##### **Sung in Latin**

Agnus Dei, qui tollis peccata mundi, miserere  
nobis.

Agnus Dei, qui tollis peccata mundi, miserere  
nobis.

Agnus Dei, qui tollis peccata mundi, dona  
nobis pacem.

##### **English Translation**

I believe in one God, the Father almighty,  
maker of heaven and earth,  
of all things visible and invisible.

I believe in one Lord Jesus Christ,  
the Only Begotten Son of God,  
born of the Father before all ages.

God from God, Light from Light, true God  
from true God,

begotten, not made, consubstantial with the  
Father;

through him all things were made.

For us and for our salvation

he came down from heaven,

and by the Holy Spirit was incarnate

of the Virgin Mary, and became man.

For our sake he was crucified under Pontius Pilate,

he suffered death and was buried,

and rose again on the third day in accordance  
with the Scriptures.

He ascended into heaven and is seated at the  
right hand of the Father.

He will come again in glory

to judge the living and the dead

and his kingdom will have no end.

I believe in the Holy Spirit, the Lord, the giver  
of life,

who proceeds from the Father and the Son,

who with the Father and the Son is adored and  
glorified,

who has spoken through the prophets.

I believe in one, holy, catholic and apostolic  
Church.

I confess one Baptism for the forgiveness of sins

and I look forward to the resurrection of the dead  
and the life of the world to come. Amen.

##### **English Translation**

Blessed is he who comes in the name of the  
Lord.

Hosanna in the highest.

##### **English Translation**

Lamb of God, you take away the sins of the  
world, have mercy on us.

Lamb of God, you take away the sins of the  
world, have mercy on us.

Lamb of God, you take away the sins of the  
world, grant us peace.

The *Te Deum* is a common text used in Christian churches within the Matins, the morning prayer services of the Office. Due to its liturgical popularity, this text has been set to music by countless composers throughout history. **Joseph Haydn** composed two settings, both in C Major. The second *Te Deum* setting (subtitled “For the Empress Marie Therese”) is among Haydn’s most popular choral-orchestral works. Marie Therese, the second wife of Emperor Franz I, was a skilled soprano who sang the solos when Haydn’s oratorios (*The Creation* and *The Seasons*) were performed in Vienna. *Te Deum* No. 1 was premiered in 1800 for a visit between the royal family and Lord Nelson. The piece is through-composed in one movement, though it divides into three sections: fast-slow-fast. The final section concludes with a double fugue, in which two distinct musical themes are presented, imitated, and developed by each voice part and instrument.

### Sung in Latin

Te Deum laudamus: te Dominum confitemur.  
Te æternum Patrem omnis terra veneratur.  
Tibi omnes Angeli; tibi cæli et universæ  
potestates.  
Tibi Cherubim et Seraphim incessabili voce  
proclamant:  
Sanctus, Sanctus, Sanctus, Dominus Deus  
Sabaoth.  
Pleni sunt cæli et terra majestatis gloriæ tuæ.  
Te gloriosus Apostolorum chorus;  
Te Prophetarum laudabilis numerus;  
Te Martyrum candidatus laudat exercitus.  
Te per orbem terrarum sancta confitetur  
Ecclesia:  
Patrem immensæ majestatis;  
Venerandum tuum verum et unicum Filium;  
Sanctum quoque Paraclitum Spiritum.  
Tu Rex gloriæ, Christe.  
Tu Patris sempiternus es Filius.  
Tu ad liberandum suscepturus hominem,  
non horruisti Virginis uterum.  
Tu, devicto mortis aculeo,  
aperuisti credentibus regna cælorum.  
Tu ad dexteram Dei sedes, in gloria Patris.  
Judex crederis esse venturus.  
Te ergo quæsumus, famulis tuis subveni,  
quos pretioso sanguine redemisti.  
Æterna fac cum sanctis tuis in gloria numerari.  
Salvum fac populum tuum, Domine,  
et benedic hæreditati tuæ.  
Et rege eos, et extolle illos usque in æternum.  
Per singulos dies benedicimus te.  
Et laudamus nomen tuum in sæculum, et in  
sæculum sæculi.  
Dignare, Domine, die isto sine peccato nos  
custodire.  
Miserere nostri, Domine, miserere nostri.  
Fiat misericordia tua, Domine, super nos,  
quemadmodum speravimus in te.  
In te, Domine, speravi: non confundar in  
æternum.

### English Translation

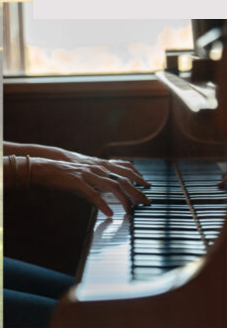
We praise thee, O God: we acknowledge thee to  
be the Lord.  
All the earth doth worship thee: the Father  
everlasting.  
To thee all Angels cry aloud: the Heavens, and  
all the Powers therein.  
To thee Cherubim and Seraphim continually do cry,  
Holy, Holy, Holy, Lord God of Sabaoth;  
Heaven and earth are full of the Majesty of thy glory.  
The glorious company of the Apostles praise thee.  
The goodly fellowship of the Prophets praise thee.  
The noble army of Martyrs praise thee.  
The holy Church throughout all the world doth  
acknowledge thee;  
The Father of an infinite Majesty;  
Thine honourable, true and only Son;  
Also the Holy Ghost the Comforter.  
Thou art the King of Glory, O Christ.  
Thou art the everlasting Son of the Father.  
When thou tookest upon thee to deliver man,  
thou didst not abhor the Virgin’s womb.  
When thou hadst overcome the sharpness of death  
thou didst open the Kingdom of Heaven to all  
believers.  
Thou sittest at the right hand of God in the  
glory of the Father.  
We believe that thou shalt come to be our Judge.  
We therefore pray thee, help thy servants,  
whom thou hast redeemed with thy precious blood.  
Make them to be numbered with thy Saints in  
glory everlasting.  
O Lord, save thy people,  
and bless thine heritage.  
Govern them and lift them up for ever.  
Day by day we magnify thee;  
And we worship thy Name, ever world without end.  
Vouchsafe, O Lord, to keep us this day without sin.  
O Lord, have mercy upon us, have mercy upon us.  
O Lord, let thy mercy lighten upon us,  
as our trust is in thee.  
O Lord, in thee have I trusted: let me never be  
confounded.

2023

# COUGAR SUMMER MUSIC CAMP



WASHINGTON STATE UNIVERSITY  
School of Music



**JUNE 18–24, 2023**

The camp will feature Keyboard Explorations, Wind Ensemble, Concert Choir, Jazz Band, and Musical Theatre!  
Electives include: Conducting, Leadership, Recording Studio/Technology, Chamber Music, Double Reed Making and African Drumming.  
The camp will feature special concerts/recitals, social events at the WSU UREC Center, swimming, and more...

**FOR MORE INFO AND TO REGISTER, VISIT: [www.music.wsu.edu/cougar-summer-music-camp](http://www.music.wsu.edu/cougar-summer-music-camp)**



WASHINGTON STATE UNIVERSITY  
**School of Music**



Scan this QR code  
to give a gift to the  
WSU School of Music.

Contributions provide support for music student scholarships, faculty development, renovations of academic and performance spaces, guest performances, and purchase of instruments and equipment for various WSU ensembles.

Keep up with WSU Music on Social Media!

    @WSUPullmanMusic

   @wsuchoralmusic

**Thank You**  
**For Your Support!**

This concert was made possible in part by these entities:



INNOVIA  
FOUNDATION



ST. JAMES  
EPISCOPAL CHURCH



ART WORKS.



100 YEARS, 100 STORIES

National  
Endowment  
for the Arts  
[arts.gov](http://arts.gov)

arts  
IDAHO



GLADISH



Washington Idaho  
SYMPHONY



WAWAWAI  
CANYON  
WINERY

Thank you to our advertisers and community sponsors!



**Jess Dahlinger**

Owner/Broker

GRI/ABR/CRS/CMRS

208-301-0777

jess@moscowrealty.com

jessicadahlingerrealestate

jessicadahlinger\_realtor



208-882-5531  
moscowrealty.com  
201 E. Third Street Moscow, ID 83843



## Circles of Caring Adult Day Health

Let us help you and your loved one

Circles of Caring is a unique day program designed to provide respite for the caregiver and enriching activities & medical oversight for your loved one.

(509) 334-6483    [www.circlesofcaring.org](http://www.circlesofcaring.org)

*As long as we live,  
there is never enough singing.*  
Martin Luther

With thanks and appreciation to the Palouse Chorale Society



[www.colemanoil.com](http://www.colemanoil.com)



304 N. Main Street, Moscow  
[store@palousehabitat.org](mailto:store@palousehabitat.org)  
(208) 882-5246  
[palousehabitat.org](http://palousehabitat.org)

## Palouse Habitat Surplus Sale



Shop



Donate



Volunteer

### GO AHEAD AND SMILE!



PROUD SPONSORS OF PALOUSE CHORAL SOCIETY

## PICKARD ORTHODONTICS

Dr. Michael Pickard, DDS, MS. Dr. Derrick Crawford, DDS MS  
Your only board-certified orthodontist in the Quad-Cities

Call today to schedule your  
free consultation

Lewiston (208) 746-2020  
Moscow (208) 882-6360  
Pullman (509) 332-0674

Have a Business? Advertise with PCS!  
[www.palousechoralsociety.org/advertise-in-pcs-programs/](http://www.palousechoralsociety.org/advertise-in-pcs-programs/)



**Community Congregational**  
United Church of Christ  
*Inclusive and Progressive*

## Join us!

Sundays at 10:30 a.m.  
525 NE Campus Street in Pullman  
(509) 332-6411  
[pullmanucc.org](http://pullmanucc.org)



**Happy Hour 3-5:30**  
Tuesday - Friday

Buy a beer  
get a FREE slice

125 E 2nd St, Downtown Moscow  
[slicetaphouse.com](http://slicetaphouse.com)



**ST. MARY'S PARISH SCHOOL**  
Pre-school through 8th grade

*Igniting Faith, Knowledge,  
Creativity and Service*

- 412 N Monroe St. Moscow, ID
- 208.882.2121
- [enrollment@stmarysmoscow.org](mailto:enrollment@stmarysmoscow.org)
- [www.stmarysmoscow.com](http://www.stmarysmoscow.com)



**Bangladeshi Cuisine**

Visit our newly minted  
restaurant at 350 E Main  
St at Downtown Pullman.

Please contact Shaheen  
for your catering needs:  
509-592-7381  
[info@mela-pullman.com](mailto:info@mela-pullman.com)



永利川菜餐館  
**NEW GARDEN**  
Restaurant

OPEN 7 DAYS  
11:00AM - 11:00PM

400 South Grand Ave.  
Pullman, WA 99163  
Tel: (509) 332-0728



Visit us at [p1fcu.org](http://p1fcu.org) to find out more  
about who we are and what we do.

## Jay Johnson

attorney at law

604 S. Washington Street, suite 3  
Moscow, Idaho 83843

phone: 208-882-1357

fax: 208-567-0551

email: jay.dr.juris@gmail.com



# CONCORDIA

## Lutheran Church

1015 NE Orchard Drive  
Pullman, WA 99163

info@concordiapullman.org

5093322830

**In Person Education Hour**

Sunday 9:00 am

**Worship (Online & In Person)**

Sunday 10:00 am

**Bible Class (Adult)**

Wednesday 7:00 pm



Donate



<https://palousechoralsociety.org/support-pcs/>



Innovia Foundation (TAX ID: 91-0941053)

for the Palouse Choral Society Fund

818 W. Riverside Ave., Suite 650

Spokane, WA 99201

# Support

## Support Palouse Choral Society

### Levels of support:

- Conductor's Circle \$5,000 & above
- Concert Sponsor \$2,500
- Concert Partner \$1,000
- Benefactor \$500
- Patron \$250
- Supporter \$100
- Friend \$50

### Conductor's Circle, Sponsors, and Partners:

- are recognized in publicity materials: programs, posters, press releases
- are personally recognized and thanked in concert settings
- receive complimentary tickets to concerts

### Business Advertisers:

\$100 annually provides a business card advertisement of your company or business in every concert program during the year!

### Giving Later\*...

Name PCS as a beneficiary:

- In your Will
- In your Living Trust
- In your Retirement Plan Assets
- In your Life Insurance

\*As always, discuss any planned giving strategies with your attorney or financial planner to take advantage of the opportunities that are right for you.

Palouse Choral Society is recognized by the IRS as 501 (c) (3) Charitable Organization #91-2046954

Contributions to PCS may be made through our website at [www.palousechoralsociety.org](http://www.palousechoralsociety.org) or by mailing your contribution to: PCS, PO Box 8112, Moscow, ID 83843 For more information, please contact our executive director at 509.597.8917.



# Donate



PALOUSE  
CHORAL  
SOCIETY

*Help us build the*  
Centre for the Arts  
at Gladish

[www.CFTAGladish.org](http://www.CFTAGladish.org)

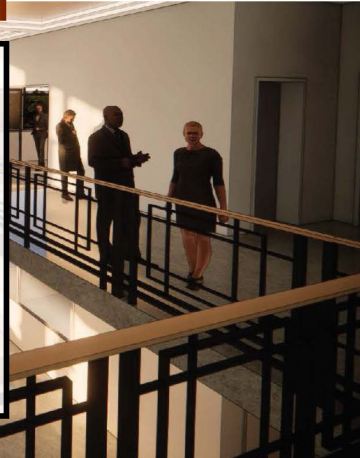
509-332-8081

115 NW State St | Pullman, WA



"The creation of a [Centre for the Arts at Gladish] will have a dynamically positive impact on our organizations. We will benefit greatly from a shared office space, admin services, box office, and rehearsal space. The Centre will be an especially positive change for Gladish Community and Cultural Center. Growth, increased stability, and greater visibility in and beyond the Pullman/Moscow communities are very real outcome possibilities. "

*Janice O'Toole, Executive Director, Palouse Choral Society*



"This [Centre for the Arts is] a desired and essential amenity for the entire Palouse and we wholeheartedly support a new Performing Arts Center. "

*Marie Dymkoski, Executive Director, Pullman Chamber and Visitor Center*



"A community-wide venue to support the arts across all genres, cultures, and generations will create tremendous opportunities, build a sense of belonging, and provide significant economic growth opportunities to the greater Palouse community and beyond."

*Elizabeth S. Chilton, Chancellor, WSU Pullman*



The Gladish is building a home for the arts right here on the Palouse! This new Centre, located on the 1954 wing of the Gladish Centre, will feature a state of the art Main Stage auditorium, built to be a home for all our performing arts groups including Washington Idaho Symphony and the Palouse Choral Society. The new facility will include new seating, updated interiors, new HVAC systems, new lighting and sounds systems, new entrance from the parking lot, and a patron lobby with a grand staircase. Downstairs will house the renovated Little Theater built for intimate theatrical experiences in a “black box” setting. The Little Theater wing will also include updated technical systems, green room, dressing rooms, a recording studio, and a new lobby and entrance.

## Vision

The Centre for the Arts at Gladish will seek to enhance economic vitality and quality of life on the Palouse and in the Lewis Clark Valley through its production and hosting of live performances and community events, support of the arts community and the organizations that operate in the arts industry, and reasonably affordable venue space rentals available for the community at large.

## Mission

The Centre’s mission will be to enhance the vibrancy and quality of life on the Palouse and in the Lewis Clark Valley through the production of live performances and in its support of arts organizations.

# Yes! Lets build that Centre!

## My Information:

Name(s): \_\_\_\_\_

Address: \_\_\_\_\_ City: \_\_\_\_\_ State: \_\_\_\_\_ Zip: \_\_\_\_\_

Email: \_\_\_\_\_

Please add me to your email list!

I wish my gift to remain anonymous

Check enclosed payable to: *Friends of Gladish*

Credit Card (all major brands accepted)

Card #: \_\_\_\_\_

Exp Date: \_\_\_\_\_ CVV Code: \_\_\_\_\_

Please charge my credit card:

\$ \_\_\_\_\_

## I want to support the Gladish Centre for the Arts with my gift of:

- Founder - \$25,000+
- Benefactor - \$10,000 - \$24,999
- Visionary - \$5,000 - \$9,999
- Encore - \$3,000 - \$4,999
- Ovation - \$2,000 - \$2,999
- Bravo - \$750 - \$1,999
- Friend - \$100 - \$749
- I want my name on a seat in the auditorium! \$300/seat

*You will be contacted by a Gladish representative to help you choose your seat*

*Please send your gift to the Friends of Gladish at  
115 NW State St, Suite 313  
Pullman WA 99163*

You can also make your donation online at:  
[www.CFTAGladish.org](http://www.CFTAGladish.org)

