




Article

Utilization of Evolutionary Plant Breeding Increases Stability and Adaptation of Winter Wheat Across Diverse Precipitation Zones

Lance F. Merrick ¹, Steven R. Lyon ², Kerry A. Balow ¹, Kevin M. Murphy ¹, Stephen S. Jones ² and Arron H. Carter ^{1,*}

¹ Department of Crop and Soil Science, Washington State University, Pullman, WA 99164, USA; lance.merrick@wsu.edu (L.F.M.); balow@wsu.edu (K.A.B.); kmurphy2@wsu.edu (K.M.M.)

² Department of Crop and Soil Science, Washington State University, Mount Vernon Research and Extension Center, Mount Vernon, WA 98273, USA; slyon@wsu.edu (S.R.L.); jones@wsu.edu (S.S.J.)

* Correspondence: ahcarter@wsu.edu; Tel.: +1-509-335-6198

Received: 20 October 2020; Accepted: 19 November 2020; Published: 21 November 2020



Abstract: Evolutionary plant breeding (EPB) is a breeding method that was used to create wheat (*Triticum aestivum* L.)-evolving populations (EP), bi-parental and composite-cross populations (BPPs and CCPs), by using natural selection and bulking of seed to select the most adaptable, diverse population in an environment by increasing the frequency of favorable alleles in a heterogeneous population. This study used seven EPs to evaluate EPB in its ability to increase the performance of agronomic, quality, and disease resistance traits and adaptability across different precipitation zones. The populations were tested in field trials in three diverse locations over 2 years. Least significant differences showed the EPs performance was dependent on their pedigree and were statistically similar and even out-performed some of their respective parents in regards to grain yield, grain protein concentration, and disease resistance. Stability models including Eberhart and Russel's deviation from Regression (S^2d_i), Shukla's Stability Variance (σ_i^2), Wricke's Ecovalence (W_i), and the multivariate Additive Main Effects and Multiplicative Interaction (AMMI) model were used to evaluate the adaptability of the EPs and their parents. The BPPs and CCPs demonstrated significantly greater stability over the parents across precipitation zones, confirming the capacity of genetically diverse EP populations to adapt to different environments.

Keywords: evolutionary plant breeding; evolving populations; bi-parental population; composite-cross population; natural selection; stability

1. Introduction

The basis of mass selection was credited to Danish biologist W. Johansen, in 1903 [1]. Mass selection is referred to as one of the oldest methods of selection and has been long utilized by farmers who saved seed from desirable plants in order to plant them the following year. Mass selection works on a population level by increasing the genetic frequencies of desirable genes [1]. Selection for self-pollinated crops starts with planting a heterogeneous population in a field, and then selection is made on a visual basis. The seeds from the selected plants are bulked and replanted for the next generation. This method is repeated until a desired homogenous genotype is created. The homogenous genotype is then grown in replicated, maintained plots in order to properly select the superior genotype [1]. Mass selection is used in conjunction with the bulking of seed [2]. Bulk breeding is one of the simplest methods of developing recombinant inbred lines [2]. It is accomplished by bulking seeds from an F_2 population that was created by allowing the F_1 hybrid to self-pollinate. The F_2 seeds that are bulked are grown

and once again allowed to self-pollinate, and the process continues. Bulking does not require extensive record-keeping and allows for natural selection to take place, often useful in breeding programs with large numbers of plants [2].

Evolutionary plant breeding (EPB) is a strategy used to increase the diversity and stability of a crop in a specific environment using natural selection and can be used to address the problems with population expansion and climate change [3–7]. Due to fluctuating weather conditions, cultivars developed by conventional selection and breeding methods designed to identify the best cultivars in or across locations, do not have the capacity to handle unpredictable environments [7]. Using a breeding method that deploys genetic diversity that allows crops to adapt, reduces the progress of epidemics and increases yield stability. Stability over fluctuating conditions will be key for overcoming climate change especially in dryland regions that are dependent on timely precipitation [7]. The EPB method is one such breeding method that can establish greater resilience and stability while promoting genetic variability, and is integrable into developing countries that will be most affected by climate change [7].

The EPB breeding method was first described in a classical study by Suneson [8], in which diverse barley varieties were hybridized, and the F_1 progeny bulked and subjected to natural selection in successive years and environments. The resulting populations remain genetically diverse, allowing change in allele frequencies over time in response to selection pressure [3]. When diverse genotypes are grown together, the different genetic combinations can complement performance and aid in the exploitation of limited resources or disease resistance by allowing natural selection pressure to conserve favorable alleles in the heterogeneous population [3]. Favorable alleles give certain genotypes within the heterogeneous populations a competitive advantage and produce a larger proportion of seed [3]. The populations used in Suneson's study are referred to as Composite-Cross Populations (CCP) by contemporary EPB papers [3–5,9–13].

Many studies propose EPB methods for low input and organic management programs [3,4,6,9–13]. In cropping systems with organic agriculture, synthetic pesticides and fertilizers are not applied, which creates a larger reliance on genetic variation and disease resistance within the selected genotype. However, most varieties developed by commonly used breeding methods, such as the pedigree method, are homogenous. Under these conventional commercial breeding methods, the selection pressures often found in low input systems are mediated by the use of synthetic pesticides and fertilizers, which favor genotypes that perform optimally in favorable environments under high-input management systems [9]. Therefore, these genotypes may perform poorly under the environmental variability of low input production conditions and lead to a lack of stability in crop performance. This lack of stability creates demand for genotypes that have been developed for low input systems, which demonstrate stable crop performance in the fluctuating environments of organic cropping systems [10]. Previous studies have shown the stability of CCPs over their pureline parents [10,14].

Drought and limited water availability have historically been the main factor limiting crop production [6]. It is estimated that the overall costs and risks of climate change will result in around a 5% decrease in global gross domestic product [15]. In inland Washington, one of the biggest agronomic limitations is moisture availability, specifically, in central and eastern Washington dryland cropping systems [16]. Due to climatic variability, the area is divided into three zones based on precipitation. The low precipitation zone receives an average annual precipitation of less than 300 mm. The intermediate zone receives an average of 300–450 mm of precipitation, and the high zone receives 450 to 600 mm of precipitation [16]. However, due to different cropping systems and environmental conditions, genotypes developed in the eastern, higher precipitation region, do not perform well in the central low precipitation environments and vice versa. This is due to different breeding goals for each area, specifically in the low precipitation zones, with a prioritization of selection on emergence traits and drought tolerance. Environmental diversity requires breeders to create two separate breeding populations tailored to each precipitation zone. With the development and emerging research into EPB, an opportunity arises to evaluate the possibility of developing bi-parental and composite-cross populations (BPPs and CCPs, respectively), in a single location, and then subsequently selecting

competitive populations in differing precipitation zones. BPPs and CCPs are referred to further as evolving populations (EPs) or as genotypes when referring to both EPs and parental lines.

This study presents empirical research for the evaluation of the EPB method applied to seven winter wheat (*Triticum aestivum* L.) EPs in both high and low precipitation zones. The objectives of this study were to (1) test various EPs against their corresponding parents for agronomic, quality, and disease resistance performance; and (2) test EPs performance and stability across precipitation zones and environments in which they were not developed in. This study aided in determining the performance of the EPB method and its ability to develop genotypes adaptable to different precipitation zones.

2. Materials and Methods

2.1. Creation of the Evolving Populations

The first stage of the EPB method involves crossing parental genotypes. In total, 7 EPs of winter wheat were used in this study and are shown in Table 1. All 7 populations were crossed with a common parent 'WA007933' in the Plant Growth Facility at Washington State University, Pullman, WA, in 2002. A total of 2 BPPs, 101 and 102, were composed of crosses with parents 'Eltan' (PI 536994; [17]) and 'Lewjain' (CLTR 17909; [18]), adapted for low precipitation environments. A CCP, 103, was created by bulking equal parts of populations 101 and 102. The next 2 BPPs, 104 and 105, were composed of crosses with parents, 'Albion' (PI 608582) and 'Stephens' (CLTR 17596; [19]), adapted for high precipitation environments, again to the common parent WA007933. A CCP, 106, was created by bulking equal parts of populations 104 and 105. The final BPP, 107, was composed of crosses with parents 'Sorbas' and WA007933. The second stage of EPB is the multiplication of seed from each cross. All F₁ seed was bulked, and F₂ seed was planted, at the Spillman Agronomy Farm in Pullman, Washington, in 2003. The harvested seed of each F₂ population was bulked at harvest, and also sampled to create the CCPs. The outcome was a population of diverse progeny from the same family, and this population is what is considered a BPP. In our study, we generated 5 BPPs and 2 CCPs. The third stage consists of increasing a portion of the seed and sowing it again without breeder-imposed selection pressure. In the Fall of 2003, 50 grams of each F₃ population were randomly selected and grown in Pullman, Central Ferry, and Lind, Washington. This was repeated for 5 more years until the EPs reached the F₈ generation during harvest in 2009. This F₈ generation is what is considered the fourth stage of evolutionary plant breeding and consists of the final population. The F₈ generation is similar to the creation of pureline genotypes.

Table 1. Bi-parental and composite-cross population (BPP and CCP, respectively) pedigrees.

Population	Pedigree	Environmental Suitability of Parents
101 *	Eltan/WA007933	Low Precipitation
102 *	Lewjain/WA007933	Low Precipitation
103 †	equal parts Eltan/WA007933 and Lewjain/WA007933	Low Precipitation
104 *	Albion/WA007933	High Precipitation
105 *	Stephens/WA007933	High Precipitation
106 †	equal parts Albion/WA007933 and Stephens/WA007933	High Precipitation
107 *	WA007933/Sorbas	-

* Bi-parental populations; † composite-cross populations.

2.2. Genetic Markers

Genetic markers for each EP at the F₈ generation and their respective parents, along with the EPs 101 and 107 from the F₂ generation were analyzed using the 9K iSelect beadchip assay [20]. DNA was extracted from each EP and parent by growing 12 seeds from each of the EPs to the three-leaf stage, and cutting 2.5 cm of the newest leaf. In total, 12 seeds were used to capture most of the heterozygosity in the F₈ and F₂ generations. Extraction was completed using the standardized methods of the DNeasy

96 Plant Kit (Qiagen). After DNA extraction, DNA concentration was determined, diluted to 40 ng/μL, then the 12 samples were combined in equal proportions to capture any heterogeneity that may have still existed in the population. Allelic and heterozygosity frequency was measured for each population and then markers were filtered for at a missing rate of 20% and monomorphic markers were removed. Population structure and genetic diversity was analyzed using model based clustering using “mclust” and principal component analysis using “prcomp” in R [21]. The genotype data presented in this study are available in Supplementary File 1 (File S1).

2.3. Experimental Design

Once the EPs reached the F₈ generation, they were subsampled and grown in field trials for evaluation in the 3 locations under conventional management systems. This was completed in 2 separate growing seasons, 2010–2011 and 2011–2012 for multiyear analyses. Field trials were planted in randomized complete block designs (RCBD), with a total of 3 blocks and 33 different entries. Supplementary Table S1, displays the entries in each field trial. The entries included the 7 EPs from the initial F₃ generation respective to their location as F₃ controls. For example, the F₃ EPs tested in each location were the source for the EPB method and development of the F₈ EPs. The F₈ generation EPs developed from each population in each location were also included as entries in each field trial and accounted for 21 entries composed of the 7 populations developed in the 3 locations. The remaining 5 entries included the different parents for each EP as a parental control, except for the parent Sorbas.

Pullman was the high precipitation location with a recorded 423.67 mm and 496.32 mm of rain in 2011 and 2012, respectively (Table 2). Lind was the low precipitation location with a recorded 163.83 mm and 308.10 mm of rain in 2011 and 2012, respectively (Table 2). Central Ferry is an irrigated location and received 600 mm of irrigation each year and received 219.5 mm and 352.0 mm of precipitation in 2011 and 2012, respectively. The precipitation for Pullman was relatively the same in both years, whereas Lind 2012 recorded almost double the amount of rain than in 2011. Precipitation and temperature were recorded using the AgWeatherNet system provided by Washington State University [22]. Precipitation and temperature for Central Ferry were not available from the AgWeatherNet. Therefore divisional data were obtained from the National Climatic Data Center for the averages in the central basin division in Washington State [23].

Table 2. Precipitation and temperature for Pullman, Central Ferry, and Lind in 2011 and 2012.

Location		2011	2012
Pullman	Precipitation	423.67 mm Precipitation	496.32 mm Precipitation
	Temperature	7.7 °C	8.8 °C
Central Ferry	Precipitation	600 mm Irrigated 219.5 mm Precipitation	600 mm Irrigated 352.0 Precipitation
	Temperature	9.7 °C	10.7 °C
Lind	Precipitation	163.83 mm Precipitation	308.10 mm Precipitation
	Temperature	9.0 °C	10.1 °C

2.4. Data Collection

Field trials were evaluated in 3 locations under conventional management systems. A total of 8 traits were recorded for each entry including three agronomic traits, three quality traits, and 2 stripe rust resistance traits. The phenotype data presented in this study are available in Supplementary File 2 (File S2).

2.4.1. Agronomic Data

In total, 3 agronomic traits were measured for each plot. Heading date, which is based on the Julian calendar date when 50% of the plot reached Feekes growth stage 10.1 [24]. Plant height

was measured from the base of the plants to the top of the fully exposed head in cm. Grain yield (kg ha^{-1}) was collected by harvesting each plot using a Wintersteiger® Nurserymaster combine (Ried im Innkreis, Austria). Grain yield, heading date, and plant height were measured in all locations and blocks, with the exception of one population in the third block in Central Ferry in 2012 where data were lost.

2.4.2. End-Use Quality Data

A total of 3 quality traits were measured; these included test weight, grain protein content, and kernel hardness. Each trait was measured in at least one block for each environment in 2012, and every block in each environment in 2011 except for data from one parental line were lost in Central Ferry in 2011. Test weight was measured as kg hL^{-1} and is an indicator of the quality of wheat and correlates to easier processing and flour yield [1]. Kernel hardness was measured using the Single Kernel Characterization System 4100 (Perten Instruments, Springfield, IL, USA) and is a unitless measure. Lower values are equal to greater softness and were measured by taking the average of 300 kernels. Grain protein content was measured using a Perten DA 7000 NIR analyzer (Perten Instruments, Springfield, IL, USA) and is reported in g kg^{-1} , expressed on a 12% moisture basis.

2.4.3. Disease Evaluation

The disease traits measured were stripe rust (*Puccinia striiformis* Westend. f. sp. *tritici* Erikss.), infection type, and stripe rust disease severity. The recordings of these traits were dependent on natural infection and stripe rust incidence at the time of observation. Some trials had 2 observations for these traits and were identified with sequential numbers. The trials with only one recording were recorded right after anthesis to measure adult plant resistance. The reason there was only one recording was that stripe rust was not present in the field at earlier growth stages. If there were 2 recordings, stripe rust was present in the field at earlier growth stages, and the first recording was taken at flag leaf emergence, whereas the second trait was taken again after anthesis. In trials such as Lind in 2012, no stripe rust observations were recorded. In Pullman in 2012, only the first replication was recorded, and in Lind in 2011, there was no recording in the third block for the second set of observations. The stripe rust infection type was recorded based on a 0–9 scale, with infection type 9 being the most susceptible reaction [25]. Stripe rust severity is recorded as a percentage of the total area of the leaf using a modified Cobb Scale [26]. The latest observation for each trait in each location was used for analysis.

2.5. Statistical Analysis

Analysis of variance (ANOVA), least significant difference (LSD), Pearson correlations, and coefficient of variation (CV) were calculated using a linear model across years and locations and for each trait in a randomized complete block design (RCBD) [27]. The analyses were calculated in R, and the package “agricolae” was used for LSD tests [28]. Figures were created using the package “ggplot2” in R [21]. The linear model used for each trait across locations and years is represented as follows:

$$\text{Response}_{ijk} = \mu + G_i + L_j + Y_k + B_r(L_j \times Y_k) + G_i \times L_j + G_i \times Y_k + L_j \times Y_k + G_i \times L_j \times Y_k + e_{ijk}, \quad (1)$$

where response is the trait of interest; μ is the effect of the mean; G_i is the effect of the i th genotype; L_j is the effect of the j th location; Y_k is the effect of the k th year; B_r is the effect of the r th block; and e is the residual errors, [29]. For individual locations, the same model was used except without the L_j

location factor. Broad-sense heritability was calculated using the above model as a linear mixed model with random effects for genotype, locations, and years using the formula:

$$H = \frac{\sigma_g^2}{\left(\sigma_g^2 + \frac{\sigma_{gl}^2}{l} + \frac{\sigma_{gy}^2}{y} + \frac{\sigma_{gly}^2}{ly} + \frac{\sigma_e^2}{lyr}\right)}, \quad (2)$$

where σ_g^2 , σ_{gl}^2 , σ_{gy}^2 , σ_{gly}^2 , and σ_e^2 are the genotype, genotype by location interaction, genotype by year interaction, genotype by location by year interaction, and error variance components, r is the number of replicates, l is the number of locations, and y is the number of years in the analysis [29].

Univariate and location value statistics were calculated using RGxE programs in R. Univariate models for stability including the joint linear regression model with Eberhart and Russell's deviation from Regression (S^2d_i), Shukla's Stability Variance (σ_i^2), and Wricke's Ecovalence Stability Index (W_i) were used to assess genotype stability across locations and years and were used with code adapted from RGxE using the package "agricolae" and function "stability.par" in R [21,28,30–35]. The multivariate model, Additive Main Effects and Multiplicative Interaction (AMMI), was used to calculate stability values and were calculated and plotted using the formula suggested by Purchase et al. [30], using the function "index.AMMI" in the "agricolae" package in R [28–30]. Index selections calculated were Kang's Yield Stability Statistic (YS_i) using RGxE in R and the AMMI Yield Stability Index (AYSI) using the function "index.AMMI" in the package "agricolae" [28,35]. All stability models were recorded as rankings. Genotype plus genotype-by-environment (GGE) biplots were implemented in using the "metan" package in R [36].

3. Results

3.1. Genetic Marker Analysis

The maximum allele frequency change between the a population and it's respective parent was 3% (Table S2). The largest difference between populations and their parents in respect to heterozygosity is an increase of 15% heterozygosity in the F_8 generation. Model-based cluster classification and optimal cluster number for the BPPs showed five distinct clusters (Table S3). The five cluster results show the EPs are not necessarily grouped in their respective EPs. For example, the 104 populations, the Central Ferry, and Pullman populations are clustered together in cluster 3 with the 105 populations, and the Lind populations (8BPL104) are clustered with the 101 and 102 populations in cluster 1 (Table S3). The exception is the 107 populations where the populations are all grouped together in cluster 2 (Table S3).

The five clusters are visibly displayed in the principal component analysis biplot in Figure 1. We can see that clusters 1 and 3 contain the majority of the EPs and are grouped based on precipitation adapted parents. Cluster 1 mostly contains populations 101 and 102, which are derived from Eltan and Lewjain, both low precipitation adapted parents. Cluster 3 contains mostly populations 104 and 105 along with the common parent WA007933, and Albion and Stephens which are both high precipitation adapted parents. The parents are clustered together depending on the precipitation adaptation they were selected and bred in (Figure 1).

The results suggest the EPs are genetically grouped based on their pedigree rather than any indication the EPs were grouped base on the location they were developed in. The only exception is the BPP 8BPL104, which had a pedigree derived from high precipitation-adapted parents, but which was genetically similar to the low precipitation adapted populations 101 and 102.

3.2. Trait Analysis

The ANOVA for multilocations and LSD for multiple comparisons between individual EPs and parents showed year, location, and genotype main effects were significant for every trait with the

exception of year for grain yield and protein concentration (Table 3). Heritability was high for all traits with the exception of infection type (0.38; Table 3). The results suggest the ability to discriminate and compare genotypes for all traits due to the high genetic effects determined by the genotype significance and high heritability. The CV for each trait was low except for infection type and disease severity, and the R^2 value was high for all traits (Table 3), suggesting reliable results for the majority of the traits analyzed.

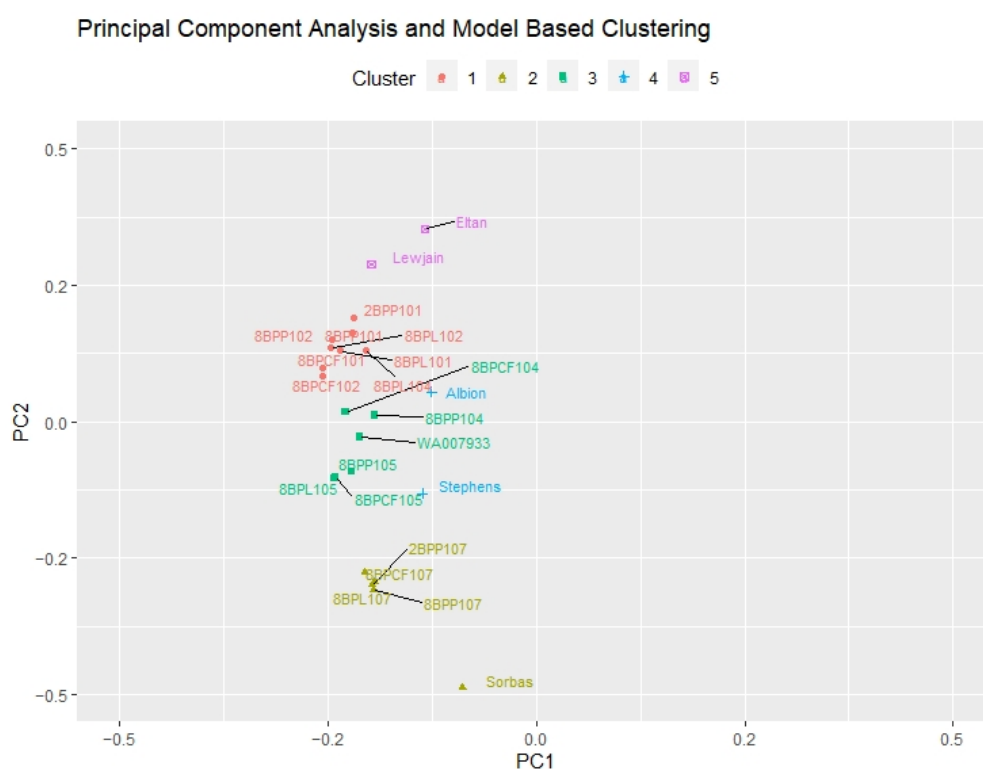


Figure 1. Principal component analysis and model-based clustering for genetic markers of populations and parents developed for Washington State. Population Key: “8”, F8 generation; “2” F2 generation, “BP”, breeding population; “P”, Pullman derived; “CF”, Central Ferry derived; “L”, Lind derived; 101, ‘Eltan/WA007933’ pedigree; 102, ‘Lewjain/WA007933’ pedigree; 104, ‘Albion/WA007933’ pedigree; 105, ‘Stephens/WA007933’ pedigree; 107, ‘Sorbas/WA007933’ pedigree.

Table 3. Analysis of variance and broad-sense heritability for agronomic, quality, and disease resistance traits in evolutionary plant breeding trials across years and locations in 2011 and 2012 in Pullman, Lind, and Central Ferry, WA.

	YIELD †	HD	PH	TW	PROT	HARD	IT	SEV
Year	2.09	12,229.97 ***	1.61.98 ***	10.47 **	2.02	35.30 ***	53.37 ***	175.08 ***
Location	1897.24 ***	21,159.68 ***	1282.93 ***	214.28 ***	664.95 ***	746.81 ***	55.56 ***	164.14 ***
Genotype	7.89 ***	46.60 ***	32.04 ***	3.44 ***	3.14 ***	38.05 ***	4.72 ***	19.93 ***
Block	7.06 ***	15.37 ***	47.06 ***	36.55 ***	21.06 ***	24.58 ***	8.06 ***	77.30 ***
Year:Genotype	1.98 **	1.67 *	1.72 *	0.47	0.95	1.92 **	2.44 ***	3.63 ***
Location:Genotype	2.66 ***	1.71 **	2.55 ***	1.19	1.06	0.91	0.88	3.47 ***
Year:Location:Genotype	2.20 ***	1.17	1.10	0.46	1.00	1.17	1.68 *	8.54 ***
R ²	0.90	0.99	0.90	0.71	0.83	0.90	0.52	0.86
DF	300	300	300	150	150	150	200	200
Mean	4865.00	158.00	48.00	76.20	12.20	37.40	4.80	19.00
CV	10.00	0.61	4.80	2.40	5.50	9.50	25.00	30.00
LSD	319.00	0.64	1.50	1.50	0.5	2.9	0.94	4.50
Heritability	0.63	0.92	0.90	0.73	0.71	0.92	0.38	0.78

† YIELD: grain yield (kg ha^{-1}); HD: heading date (50% Feekes 10.1); PH: plant height (cm); TW: test weight (kg hL^{-1}); PROT: grain protein concentration (g kg^{-1} ; 12% moisture basis); HARD: kernel hardness; IT: stripe rust infection type; SEV: stripe rust disease severity (%); LSD: least significant difference; CV: coefficient of variation; DF: degrees of freedom. “*” p -value < 0.05; “**” p -value < 0.01; “***” p -value < 0.001.

Multiple comparisons were completed for EPs and parents that were included in each trial. Grain yield, grain protein concentration, and disease severity multiple comparisons were plotted for a visual representation of agronomic, quality, and stripe rust disease resistance representations (Figure 2A–C). Means followed by a common letter are not significantly different by the LSD test at the 5% level of significance.

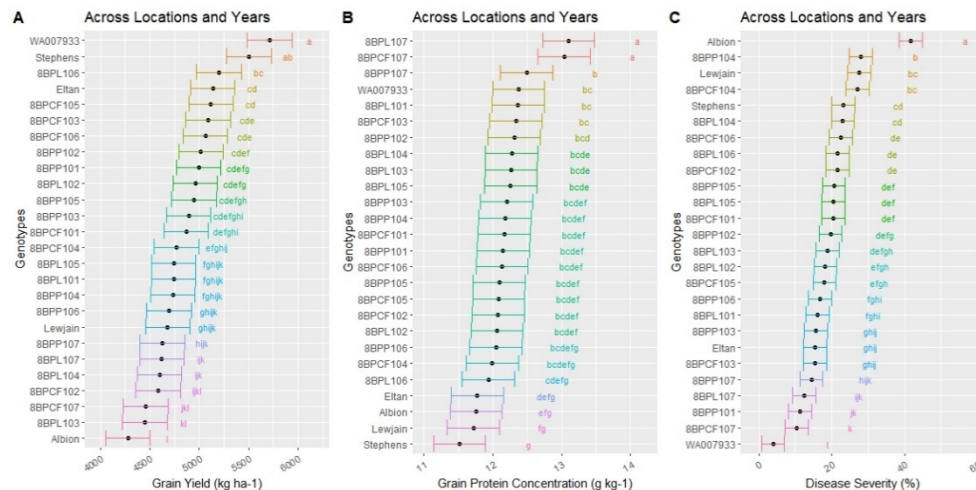


Figure 2. Least significant difference test for (A) grain yield, (B) grain protein concentration, and (C) disease severity across the locations Pullman, Lind, and Central Ferry, WA, and years 2011 and 2012. Population Key: “8”, F₈ generation; “BP”, breeding population; “P”, Pullman derived; “CF”, Central Ferry derived; “L”, Lind derived; 101, ‘Eltan/WA007933’ pedigree BPP; 102, ‘Lewjain/WA007933’ pedigree BPP; 103, ‘Eltan/WA007933’ and ‘Lewjain/WA007933’ pedigree CCP; 104, ‘Albion/WA007933’ pedigree BPP; 105, ‘Stephens/WA007933’ pedigree; 106, ‘Albion/WA007933’ and ‘Stephens/WA007933’ pedigree CCP; 107, ‘Sorbis/WA007933’ pedigree BPP.

Across locations, the common parent WA007933 and the parent Stephens yielded statistically higher than the EPs (5716 kg ha⁻¹ and 5503 kg ha⁻¹, respectively) with the exception of the CCP 8BPL106 (5200 kg ha⁻¹). The parent Eltan was the fourth-highest-yielding genotype (5137 kg ha⁻¹), but was not statistically different than the top nine EPs. For soft white wheat, lower protein is preferable. There were only a few statistical differences between the EPs and parents. The parent Stephens was statistically lower than most the EPs except for the CCP 8BPL106. The EPs 8BPL107 and 8BPCF107 had statistically higher grain protein concentration compared to all other EPs and parents. However, for disease severity, only the common parent WA007933 displayed a statistically lower disease severity than the EPs, with all three of the BPP 107s being in the five lowest values. There was no apparent advantage for EPs developed in specific environments or for the CCPs (103 and 106). Instead, the EPs performed statistically like their parents. For example, population 107 performed very similar for all three traits (Figure 2A–C), regardless of which environment it was selected in.

3.3. Location Analysis

Location means and correlations in Table 4 show a high discriminating ability for Pullman for grain yield, heading date, and protein concentration. A significant correlation reflects a strong representation of the average location, and therefore, genotypes perform similarly for the trait in question when compared to the average of all locations [37]. A significant value represents a poor discriminating ability for a trait between locations. Lind and Central Ferry have high significance for all traits, and therefore poor discriminating ability, with the exception of grain yield and heading date (Table 4). Grain yield and heading date in Lind have a significant correlation but less significant than Central Ferry and the majority of the traits.

Table 4. Location means and Pearson correlation significance levels for agronomic, quality, and disease resistance traits in each location to the mean of all locations in Washington.

Location	YIELD †	HD	PH	TW	PROT	HARD	IT	SEV
Central Ferry	4268 ***	153 **	47 ***	73.0 ***	13.9 ***	47.7 ***	4 ***	20 ***
Lind	3537 *	151 *	42 ***	77.9 **	12.4 ***	36.7 ***	5 ***	12 ***
Pullman	6792 *	171	55 ***	77.4 ***	10.5	28.2 ***	6 ***	22 ***

† YIELD: grain yield (kg ha⁻¹); HD: heading date (50% Feekes 10.1); PH: plant height (cm); TW: test weight (kg hL⁻¹); PROT: grain protein concentration (g kg⁻¹; 12% moisture basis); HARD: kernel hardness; IT: stripe rust infection type; SEV: stripe rust disease severity (%). “**” *p*-value < 0.05; “***” *p*-value < 0.01; “****” *p*-value < 0.001.

The difference in means indicates that Pullman has a larger average for grain yield (6792 kg ha⁻¹), heading date (171 days), plant height (55 cm), infection type (6), and disease severity (22%), with lower means for grain protein concentration (10.5%) and kernel hardness (28.2) (Table 5). Lind has the lowest average grain yield (3537 kg ha⁻¹), heading date (151 days), plant height (42 cm), and disease severity (12%) (Table 4). Central Ferry has intermediate values between Lind and Pullman for grain yield (4268 kg ha⁻¹), heading date (153 days), plant height (47 cm), and disease severity (20%) (Table 4). Overall, the high significance for plant height, test weight, grain protein concentration, kernel hardness, infection type, and disease severity, with the exception of grain yield and heading date in Lind and Pullman indicating that the EPs perform similarly among each location for those highly significant traits.

Table 5. Analysis of variance, coefficient of variation, and least significant differences for agronomic, quality, and disease resistance traits in evolutionary plant breeding trials across years in 2011 and 2012 for individual trials in Pullman, Lind, and Central Ferry, WA.

Pullman.	YIELD †	HD	PH	TW	PROT	HARD	IT	SEV
Year	0.07	8330.80 ***	350.44 ***	460.42 ***	168.84 ***	97.34 ***	5.87 *	135.99 ***
Genotype	7.29 ***	27.99 ***	43.84 ***	26.68 ***	2.42 **	18.34 ***	1.55	6.66 ***
Block	3.67 **	1.37	1.31	4.31 *	17.96 ***	2.67	12.08 ***	2.02
Year:Genotype	1.79 *	1.47	1.59 *	4.32 ***	1.14	1.09	1.37	3.36 ***
R ²	0.55	0.98	0.90	0.91	0.66	0.83	0.30	0.75
DF	128.00	128.00	128.00	64.00	64.00	64.00	64.00	64.00
Mean	6792.00	171.00	55.00	77.00	10.00	28.00	5.80	22.00
CV	5.90	0.41	2.70	0.54	4.00	11.00	25.00	26.00
LSD	461.00	0.80	1.70	0.59	0.59	4.20	2.00	7.90
Lind	YIELD	HD	PH	TW	PROT	HARD	IT	SEV
Year	42.29 ***	6167.22 ***	152.25 ***	200.40 ***	40.15 ***	49.02 ***	-	-
Genotype	2.14 **	11.36 ***	13.52 ***	6.66 ***	3.94 ***	11.20 ***	1.96 *	6.12 ***
Block	3.80 **	0.98	9.83 ***	8.59 ***	4.42	3.21 *	2.23	11.04 ***
Year:Genotype	2.56 ***	1.76 *	2.47 ***	1.05	0.90	2.42 **	-	-
R ²	0.41	0.97	0.76	0.75	0.50	0.76	0.25	0.65
DF	128.00	128.00	128.00	64.00	64.00	64.00	64.00	64.00
Mean	3537.00	151.00	42.00	78.00	12.00	37.00	5.20	12.00
CV	8.50	0.67	3.90	0.70	3.20	9.10	15.00	45.00
LSD	342.00	1.20	1.90	0.77	0.57	4.70	1.20	8.70
Central Ferry	YIELD	HD	PH	TW	PROT	HARD	IT	SEV
Year	9.51 **	3480.64 ***	195.52 ***	78.73 ***	45.80 ***	133.51 ***	42.97 ***	889.59
Genotype	2.93 ***	11.14 ***	3.07 ***	1.23	1.27	12.92 ***	2.11 **	9.04
Block	6.57 ***	19.87 ***	4.77 **	12.75 ***	5.60 **	3.52 *	3.35 *	6.94
Year:Genotype	1.86 **	1.57*	0.77	0.40	1.01	1.58	1.27	7.93
R ²	0.38	0.95	0.58	0.41	0.33	0.81	0.33	0.88
DF	128.00	128.00	128.00	64.00	64.00	64.00	128.00	128.00
Mean	4268.00	153.00	47.00	73.00	13.90	47.70	4.00	20.00
CV	16.00	0.75	9.60	4.40	7.10	8.50	34.00	31.00
LSD	798.00	1.30	5.20	4.5	1.4	5.8	1.60	7.10

† YIELD: grain yield (kg ha⁻¹); HD: heading date (50% Feekes 10.1); PH: plant height (cm); TW: test weight (kg hL⁻¹); PROT: grain protein concentration (g kg⁻¹; 12% moisture basis); HARD: kernel hardness; IT: stripe rust infection type; SEV: stripe rust disease severity (%); LSD: least significant difference; CV: coefficient of variation; DF: degrees of freedom. “**” *p*-value < 0.05; “***” *p*-value < 0.01; “****” *p*-value < 0.001.

ANOVA and LSD tests were completed for all traits in each location. In the individual location comparisons, the F₃ EPs were included along with the regular F₈ EPs and their parents. Grain yield, grain protein concentration, and disease severity multiple comparisons were plotted for a visual representation of agronomic, quality, and stripe rust disease resistance representations.

For the trials in Pullman, year and genotype had significant effects for each trait with the exception year for grain yield and genotype for infection type (Table 5). The CV for each trait was low, and the R² was high with the exception of infection type and disease severity (Table 5), suggesting reliable results for the majority of the traits analyzed in Pullman.

In Lind, year and genotype were significant for each trait except for infection type and disease severity due to no observations taken in 2012 (Table 5). Central Ferry also had significant effects for year and genotype with the exception of test weight, grain protein concentration, and disease severity for genotype and disease severity for year. Again, the CV and R² were relatively high in both locations for most traits.

For grain yield, most EPs were not significantly different in Lind, but significant differences were seen in Central Ferry and Pullman (Figure 3A–C). The parent Stephens was the highest yielding genotype in Pullman and Central Ferry (7857 kg ha⁻¹ and 3609 kg ha⁻¹), and the lowest yielding in Lind (3149 kg ha⁻¹) (Figure 3A–C). However, the EPs showed average stability in all environments, rather than the extremes displayed by the parents, with the EP 8BPL102 yielding the highest in Lind (3889 kg ha⁻¹) (Figure 3B).

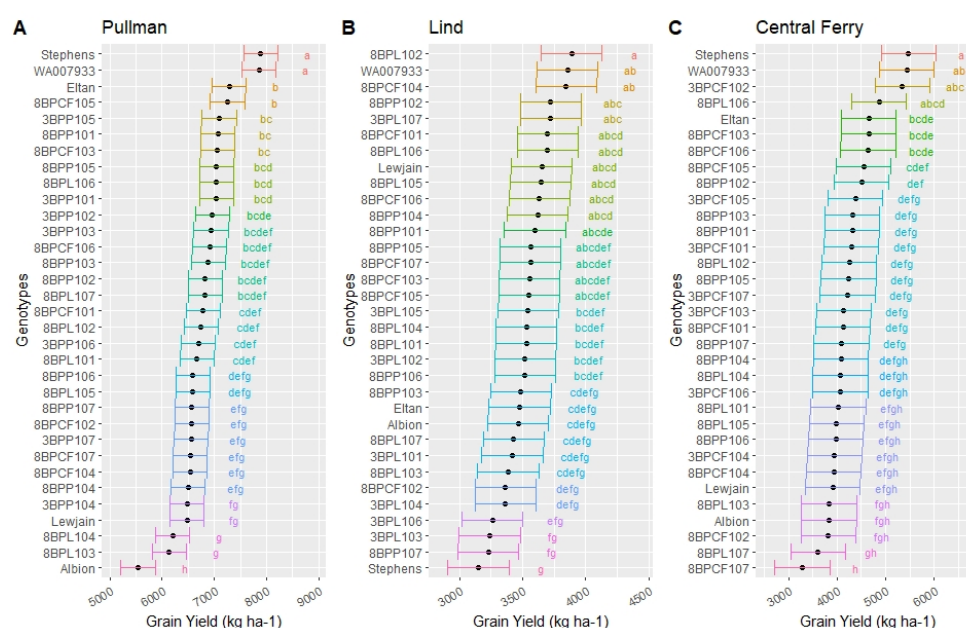


Figure 3. Least significant difference test for grain yield in (A) Pullman, (B) Lind, and (C) Central Ferry, WA, over 2011 and 2012. Population Key: “8”, F₈ generation; “3”, F₃ generation; “BP”, breeding population; “P”, Pullman derived; “CF”, Central Ferry derived; “L”, Lind derived; 101, ‘Eltan/WA007933’ pedigree BPP; 102, ‘Lewjain/WA007933’ pedigree BPP; 103, ‘Eltan/WA007933’ and ‘Lewjain/WA007933’ pedigree CCP; 104, ‘Albion/WA007933’ pedigree BPP; 105, ‘Stephens/WA007933’ pedigree; 106, ‘Albion/WA007933’ and ‘Stephens/WA007933’ pedigree CCP; 107, ‘Sorbis/WA007933’ pedigree BPP.

The EPs that were derived in their specific location did not necessarily determine their performance. The F₈’s derived from Pullman did perform the best in Pullman (Figure 3), but they also performed similarly to their parental pedigrees. The highest yielding EPs (8BPCF105 and 3BPP105) were derived from the highest yielding genotype, Stephens, and the lowest yielding EPs, 104, were derived from the

lowest yielding genotype, Albion (Figure 3A–C). This can also be seen with the majority of the highest yielding EPs in Central Ferry were selected in Central Ferry.

The inclusion of the F_3 's in individual locations allowed the comparisons of the F_8 's to determine the effect of the EPB method. The F_8 's did not necessarily out-yield the F_3 's in their respective environments. However, several of the F_8 's did yield higher than their corresponding F_3 EPs from the corresponding location where they were developed. The trend showed that if the F_8 EPs had pedigrees adapted to the respective environment, they performed better. For example, in Lind, all the F_8 BPPs and CCPs (Populations 103 and 106) with low precipitation-adapted pedigrees (101, 102, and 103), yielded higher than their F_3 counterparts (Figure 3B). The performance of the BPPs and the CCPs show no overall trend in mean performance for agronomic, quality, nor disease resistance traits.

Grain protein concentration displayed similar results over all environments, presumably due to higher heritabilities (Table 3) and less environmental effect on the performance of the genotype (Figures 4 and 5). Grain protein concentration and disease severity in multiple comparisons showed higher performance of an EP in the environment in which it was developed. In Pullman, 7 out of the top 10 genotypes for grain protein concentration were EPs developed in Pullman (Figure 4).

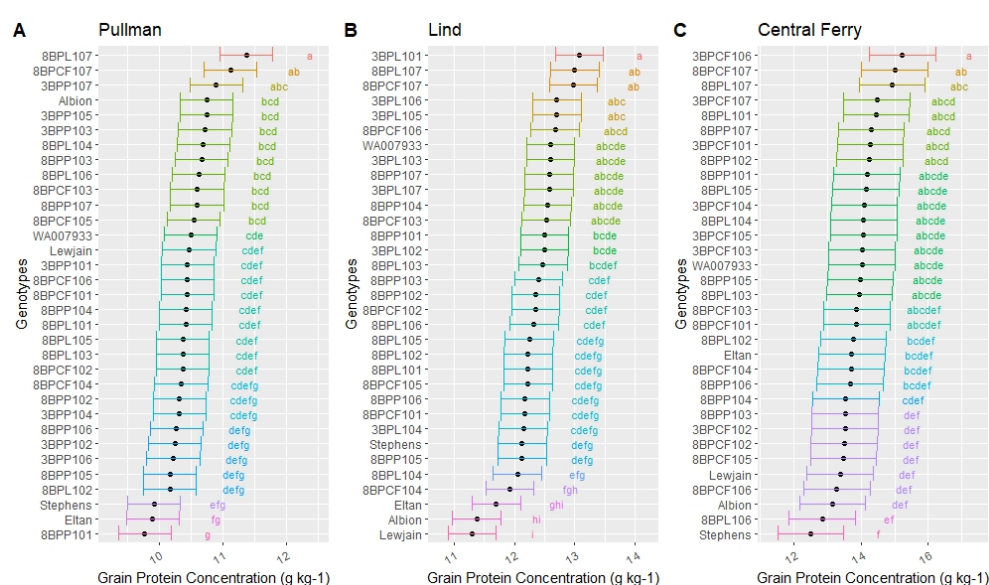


Figure 4. Least significant difference test for grain protein concentration in (A) Pullman, (B) Lind, and (C) Central Ferry, WA, over 2011 and 2012. Population Key: “8”, F_8 generation; “3”, F_3 generation; “BP”, breeding population; “P”, Pullman derived; “CF”, Central Ferry derived; “L”, Lind derived; 101, ‘Eltan/WA007933’ pedigree BPP; 102, ‘Lewjain/WA007933’ pedigree BPP; 103, ‘Eltan/WA007933’ and ‘Lewjain/WA007933’ pedigree CCP; 104, ‘Albion/WA007933’ pedigree BPP; 105, ‘Stephens/WA007933’ pedigree; 106, ‘Albion/WA007933’ and ‘Stephens/WA007933’ pedigree CCP; 107, ‘Sorbis/WA007933’ pedigree BPP.

Disease severity showed a trend of similar pedigree performance across all environments for the EP 107 (Figure 5). However, for the remaining EPs, selection pressure also was a factor in EP performance. For example, the EPs developed in Lind performed worse when grown in Central Ferry or Pullman when subjected to higher stripe rust pressure.

When LSD tests were applied between the overall groups (Parents, BPPs, CCPs, and F_3), there were few statistical differences between overall populations (Figure 6). In Central Ferry, Pullman, and across all locations, the parents were statistically higher for grain yield compared to the BPPs, but not for the CCPs or F_3 's (Figure 6A). However, in Lind, the BPPs yielded statistically higher than the F_3 's and had a higher mean than the other types of EPs (Figure 6A). Grain protein concentration showed a statistical difference between the CCPs and BPPs compared to their parents in all locations except for Pullman. The CCPs had statistically lower grain protein concentration than the F_3 's in Central

Ferry, and the BPPs had statistically lower grain protein concentration than the F₃'s in Lind (Figure 6B). Disease severity showed statistically higher severity for the parents in Lind, Pullman, and overall locations (Figure 6C). With the exception of grain yield and grain protein concentration in Central Ferry, there were few statistical differences between BPPs and CCPs (Figure 6A–C).

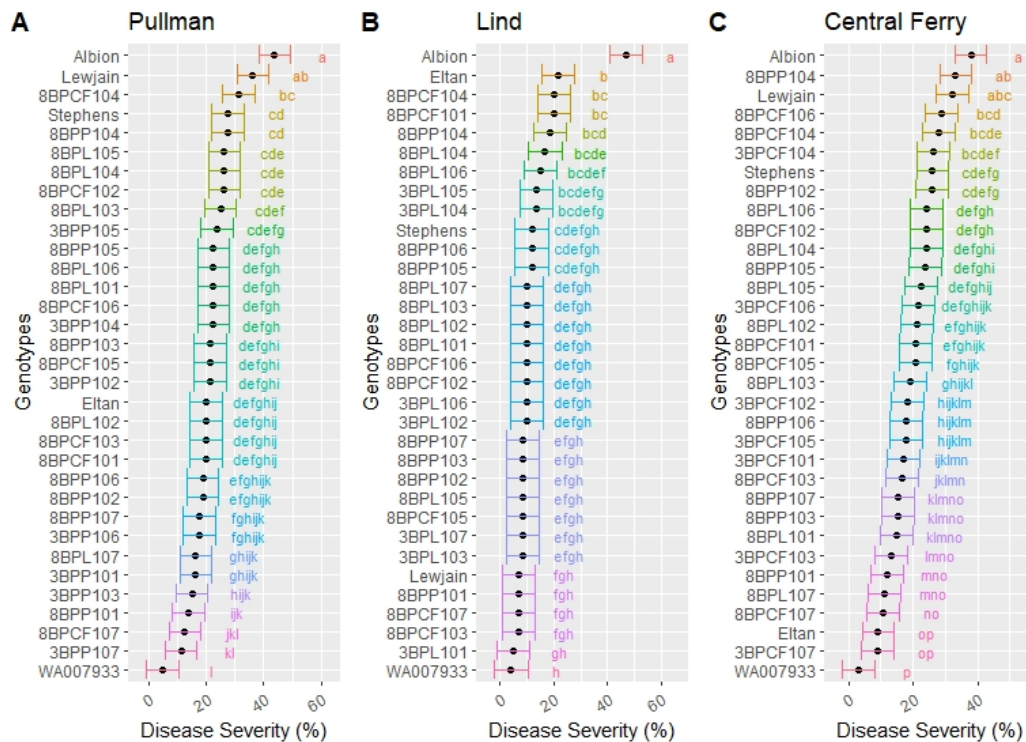


Figure 5. Least significant difference test for stripe rust disease severity in (A) Pullman, (B) Lind, and (C) Central Ferry, WA, over 2011 and 2012. Population Key: “8”, F₈ generation; “3”, F₃ generation; “BP”, breeding population; “P”, Pullman derived; “CF”, Central Ferry derived; “L”, Lind derived; 101, ‘Eltan/WA007933’ pedigree BPP; 102, ‘Lewjain/WA007933’ pedigree BPP; 103, ‘Eltan/WA007933’ and ‘Lewjain/WA007933’ pedigree CCP; 104, ‘Albion/WA007933’ pedigree BPP; 105, ‘Stephens/WA007933’ pedigree; 106, ‘Albion/WA007933’ and ‘Stephens/WA007933’ pedigree CCP; 107, ‘Sorbis/WA007933’ pedigree BPP.

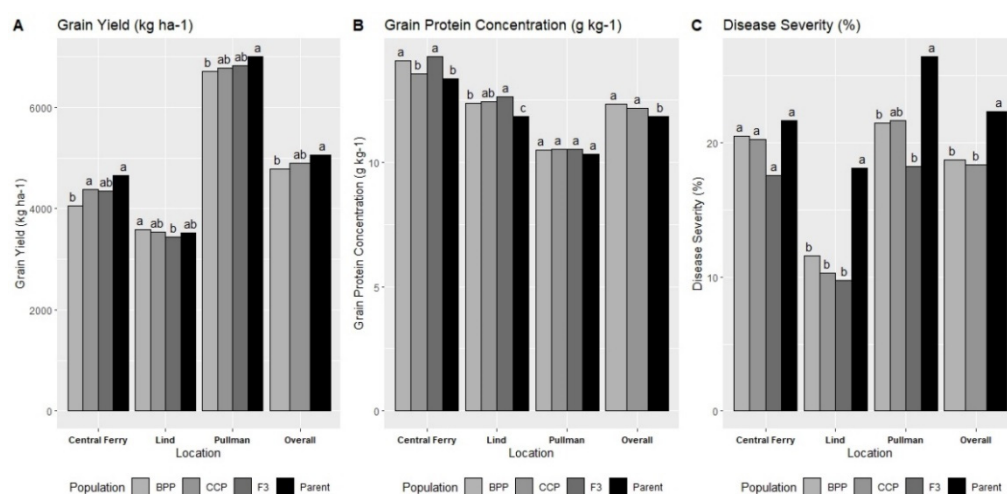


Figure 6. Least significant difference test of population types for (A) grain yield, (B) grain protein concentration, and (C) stripe rust disease severity in Pullman, Lind, and Central Ferry, WA, and overall locations over 2011 and 2012.

3.4. Stability Analysis

Stability analysis rankings for grain yield, grain protein concentration, and disease severity are shown in Table 6. Multiple stability analyses are used to appropriately account for all genotype-by-environment effect [38]. Low rankings, the higher the number, and significance for Deviation from Regression and Shukla's Stability Variance display unstable genotypes from the mean. Low rankings for Wricke's Ecovalence and AMMI Stability Value (ASV) also show unstable genotypes.

Table 6. Stability analysis rankings for Deviation from Regression (S^2d_i) AMMI Stability Value (ASV), Wricke's Ecovalence (W_i), and Shukla Stability Variance (σ_i^2), across all locations and years for grain yield, grain protein concentration, and stripe rust disease severity in Washington.

Genotype	Grain Yield (kg ha ⁻¹)				Grain Protein Concentration (g kg ⁻¹)				Disease Severity (%)			
	(S^2d_i)	(σ_i^2)	(W_i)	(ASV)	(S^2d_i)	(σ_i^2)	(W_i)	(ASV)	(S^2d_i)	(σ_i^2)	(W_i)	(ASV)
8BPCF101	6	14	7	5	7	7	2	4	11	7	20	3
8BPCF102	18*	13	6	7	24	15	9	19	10	8	17	1
8BPCF103	21	19	14	16	16	8	3	16	15	9	5	14
8BPCF104	13	22	21	13	22	13	6	26	14	11	3	18
8BPCF105	19*	12	17	17	1	3	11	1	16	14	11	10
8BPCF106	14	17	10	10	19	24	21	12	17	24*	23	19
8BPCF107	23 **	25 **	24	15	15	14	19	9	2	6	12	17
8BPL101	15	10	3	2	20	19	20	21	13	21	14	7
8BPL102	5	15	13	9	8	4	4	13	8	15	7	6
8BPL103	12	7	15	22	25	9	7	23	7	18	13	8
8BPL104	4	2	19	11	10 *	21	17	2	12	4	1	5
8BPL105	11	16	12	18	9	11	12	10	23	2	19	15
8BPL106	22*	21	18	24	6	22	25	11	21	16	8	4
8BPL107	10	23	22	4	18 **	17	10	24	6	20	16	20
8BPP101	2	1	8	6	17	18	23	20	1	5	6	11
8BPP102	20	6	4	19	14	5	18	18	22 **	25 *	22	13
8BPP103	17	5	2	14	4	10	15	7	9	19	10	9
8BPP104	9	9	11	8	11	20	14	3	19	23	18	22
8BPP105	8	3	9	12	3	6	13	17	20	17	9	12
8BPP106	1	11	5	3	12	2	1	8	3	1	4	2
8BPP107	3	8	1	1	2	1	8	5	5	3	2	16
Albion	7	4	25	23	26	23	26	25	26	22	24	25
Eltan	24 **	20	20	21	21	16	16	22	25 *	26 **	25	21
Lewjain	16	18	16	20	23 *	25	22	14	24	10	26	26
Stephens	25 **	26 **	26	25	13	26	24	6	18	12	15	23
WA007933	26 *	24 *	23	26	5	12	5	15	4	13	21	24

** p-value < 0.05; *** p-value < 0.01; **** p-value < 0.001.

The parents Eltan, Stephens, and WA007933 showed consistently unstable results in comparison to the EPs for yield across all four stability analyses (Table 6). For Deviation from Regression, the lowest rankings 18–19 and 22–26 were significant and included three BPPs developed in Central Ferry (8BPCF102, 8BPCF105, and 8BPCF107) and one CCP in Lind (8BPL106). Similar results for Shukla's Stability Variance with only one BPP being significant (8BPCF107) and two parents (Stephens and WA007933). Wricke's Ecovalence and ASV display very similar results for rankings. The genotypes that show the highest ranking for stability across all analyses included three EPs developed in Pullman, 8BPP107 for Wricke's Ecovalence and ASV, 8BPP106 for Deviation from Regression, and 8BPP101 for Shukla's Stability Variance.

The stability analysis for grain protein concentration and disease severity are similar but the results of grain yield stability were different than grain protein concentration and disease severity. Only three genotypes were significant for being unstable for Deviation from Regression for grain protein concentration (8BPL104, 8BPL107, and Lewjain), and no genotypes were significant according to Shukla's Stability Variance. Similar to grain yield, the parents displayed lower stability for Wricke's Ecovalence and ASV for grain protein concentration. The genotypes with the highest stability for grain protein concentration were 8BPP107 and 8BPP106 for Shukla's Stability Variance and Wricke's

Ecovalence, and 8BPCF105 was the highest-ranked genotype for both Deviation from Regression and ASV. Eltan and 8BPP102 were significant for Deviation from Regression and Shukla's Stability Variance along with 8BPCF106 for Shukla's Stability Variance. Lewjain was the lowest-ranked for Wricke's Ecovalence and ASV. The highest stability ranks were 8BPP101, 8BPP106, 8BPL104, and 8BPCF102 for Deviation from Regression, Shukla's Stability Variance, Wricke's Ecovalence, and ASV, respectively.

The stability analysis for the EPs and parents confirm the results seen in Figures 3–6. Overall, the parents were the most unstable genotypes for grain yield, and the EPs consistently the ranked the highest for grain yield, grain protein concentration, and disease severity stability (Table 6). Similar to the LSD results (Figures 3–6), there were no apparent advantages of BPPs over CCPs, with some both BPPs and CCPs displaying high stability across traits and analyses.

The stability of the EPs over their parents are visually shown in GGE biplots (Figure 7A). In a mean vs. stability biplot displays both the mean and stability of a genotype. The further a genotype falls from the x-axis shown with a dotted line, the less stable a genotype is [39]. The majority of the EPs are centered around the origin of the graph (Figure 7A). The lower stability of the parents (Eltan, Stephens, and WA007933) and the EPs (8BPCF103 and 8BPCF107) are displayed by the large distances between their points on the graph to the x-axis. The higher yielding of the parents is also seen in the ranking of the genotypes with Stephens and WA007933 the two furthest right on the x-axis. GGE biplots also allow the visualization of the performance of genotypes across locations. For which-won-where biplots, environments and genotypes that fall within the same two dotted lines indicate similar environmental and genotypic effect [39]. Using the which-won-where view of the GGE biplot (Figure 7B), the parents Stephens and WA007933 performed the best for Central Ferry, and Pullman, respectively. Additionally, both Pullman trials had a similar effect on genotype for grain yield as Central Ferry in 2011.

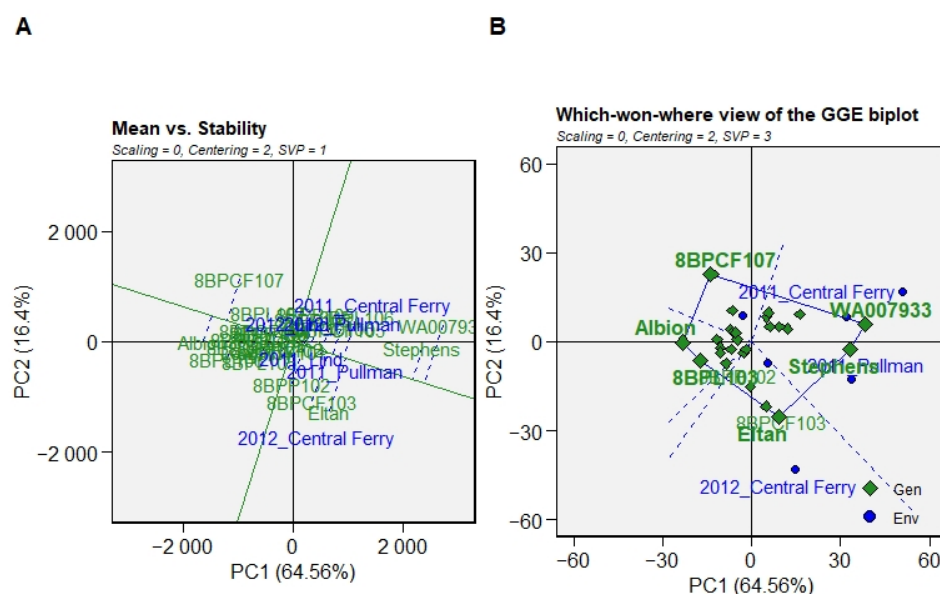


Figure 7. Genotype plus genotype-by-environment (GGE) biplot analysis for the visual assessment of (A) stability and (B) which-won-where of grain yield in evolutionary plant breeding trials in the years 2011 and 2012 in Pullman, Lind, and Central Ferry, WA. Population Key: “8”, F₈ generation; “BP”, breeding population; “P”, Pullman derived; “CF”, Central Ferry derived; “L”, Lind derived; 101, ‘Eltan/WA007933’ pedigree BPP; 102, ‘Lewjain/WA007933’ pedigree BPP; 103, ‘Eltan/WA007933’ and ‘Lewjain/WA007933’ pedigree CCP; 104, ‘Albion/WA007933’ pedigree BPP; 105, ‘Stephens/WA007933’ pedigree; 106, ‘Albion/WA007933’ and ‘Stephens/WA007933’ pedigree CCP; 107, ‘Sorbis/WA007933’ pedigree BPP.

3.5. Selection and Indices

Comparisons based on the rank of means, Kang's Stability Statistic, and the AMMI Yield stability index can be made for selection purposes accounting for performance and stability for grain yield and negative selection for grain protein concentration and disease severity. Kang's Stability Statistic also denotes a (+) for selected stable genotypes, and (-) can be used for negative selection. For grain yield, the top three for the highest rank for mean and stability indexes were WA007933, Stephens, and the CCP 8BPL106 (Table 7). Negative selection for stable high grain protein concentration and high disease severity can also be completed using the same methods for grain yield, but since lower grain protein concentration and disease severity is preferred, the (+) in Kang's Stability Statistic can be used for negative selection. In this regard, the common parent WA007933 is the fourth-highest rank in grain protein concentration and can be negatively selected for high grain protein concentration, whereas the parent Stephens is the only genotype with a (-) showing a stable lower grain protein concentration and can be selected on that basis. Due to the common parent having a high grain protein concentration, the majority of the high grain protein concentration genotypes are BPPs and CCPs and can thus be negatively selected. The opposite is seen for disease severity with the common parent WAA007933 conferring stable low disease severity with a (-) and the other parents conferring higher disease severity. Therefore, BPPs and CCPs confer better disease resistance, and parents can be negatively selected.

Table 7. Selection index for ranks for mean, Kang's Stability Statistic (YS_i), and AMMI Yield Stability Index (AYSI), across all locations and years for grain yield, grain protein concentration, and stripe rust disease severity in Washington.

Genotype	Grain Yield (kg ha^{-1})				Grain Protein Concentration (g kg^{-1})				Disease Severity (%)			
	Mean	Rank	YS_i	AYSI	Mean	Rank	YS_i	AYSI	Mean	Rank	YS_i	AYSI
8BPCF101	4868 ^{defghi}	13	15 +	13	12.2 ^{bcdef}	13	13	16	20 ^{def}	9	17 +	10
8BPCF102	4584 ^{ijkl}	23	3	23	12.1 ^{bcdef}	18	8	17	22 ^{de}	10	18 +	9
8BPCF103	5089 ^{cde}	6	22 +	6	12.3 ^{bc}	6	22 +	5	15 ^{ghij}	21	5	21
8BPCF104	4771 ^{efghij}	14	12	14	12.0 ^{bcdef}	21	5	10	27 ^{bc}	2	27 +	3
8BPCF105	5119 ^{cd}	5	23 +	5	12.1 ^{bcdef}	17	9	19	18 ^{efgh}	17	9	18
8BPCF106	5063 ^{cde}	7	21 +	7	12.1 ^{bcdef}	15	11	6	22 ^{de}	8	18 +	6
8BPCF107	4461 ^{ijkl}	24	-3	24	13.0 ^a	2	27 +	2	10 ^k	25	0	25
8BPL101	4741 ^{fghijk}	16	10	16	12.4 ^{bc}	5	23 +	4	16 ^{fghi}	19	7	20
8BPL102	4962 ^{cdefg}	10	18 +	10	12.1 ^{bcdef}	19	7	21	18 ^{efgh}	15	11	14
8BPL103	4450 ^{kl}	25	0	25	12.3 ^{bcde}	9	19 +	18	19 ^{defgh}	13	13 +	11
8BPL104	4599 ^{ijk}	22	4	22	12.3 ^{bcde}	8	20 +	12	23 ^{cd}	5	23 +	8
8BPL105	4741 ^{fghijk}	15	11	15	12.3 ^{bcde}	10	18 +	11	20 ^{def}	12	16 +	13
8BPL106	5200 ^{bc}	3	25 +	3	11.9 ^{cdefg}	22	2	22	22 ^{de}	7	21 +	7
8BPL107	4621 ^{ijk}	21	5	21	13.1 ^a	1	28 +	1	12 ^{ijk}	23	2	23
8BPP101	4995 ^{cdefg}	9	19 +	9	12.2 ^{bcdef}	14	12	9	11 ^{jk}	24	1	24
8BPP102	5018 ^{cdef}	8	20 +	8	12.3 ^{bcd}	7	21 +	14.5	20 ^{defg}	14	10	15
8BPP103	4894 ^{cdefghi}	12	16 +	12	12.2 ^{bcdef}	11	17 +	8	16 ^{ghij}	20	6	19
8BPP104	4734 ^{fghijk}	17	9	17	12.2 ^{bcdef}	12	14 +	13	28 ^b	3	26 +	4
8BPP105	4947 ^{cdefgh}	11	17 +	11	12.1 ^{bcdef}	16	10	14.5	21 ^{def}	11	17 +	12
8BPP106	4696 ^{ghijk}	18	8	18	12.1 ^{bcdef}	20	6	20	17 ^{fghi}	18	8	17
8BPP107	4629 ^{hijk}	20	6	20	12.5 ^b	3	25 +	3	14 ^{hijk}	22	3	22
Albion	4278 ^l	26	-9	26	11.8 ^{efg}	24	0	24	42 ^a	1	21 +	1
Eltan	5137 ^{cd}	4	24 +	4	11.8 ^{defg}	23	3	25	15 ^{ghij}	16	2	16
Lewjain	4681 ^{ghijk}	19	7	19	11.7 ^{fg}	25	1	23	27 ^{bc}	4	17 +	2
Stephens	5503 ^{ab}	2	19 +	2	11.4 ^g	26	-3	26	23 ^{cd}	6	22 +	5
WA007933	5716 ^a	1	25 +	1	12.4 ^{bc}	4	24 +	7	4 ^l	26	-4	26

(+) and (-) are selected genotypes for above and below the population mean, respectively.

4. Discussion

This study evaluated the EPB method in its ability to increase performance and stability in wheat. EPB presents an alternative plant breeding method that uses natural selection and bulking of seed. It has been shown to increase yield and is based on a mass selection technique used by farmers throughout the history of agriculture [8,9]. It has primarily been used in developing countries that allow farmers with limited resources to mitigate their losses for a certain pathogen or disease. Instead of committing all resources into the development of the release of one or two genotypes every year, EPB allows

breeders to plant a mixture of pedigrees to fill the need that normal commercial genotypes do not meet. Therefore, the EPB genotypes, when given enough time for random mass selection to improve the genotypes in the selected environments, require minimal inputs and mitigate the potential impact of variable climatic conditions via conservation of favorable alleles in the heterogeneous populations [3]. Examples of this would be the changing races of stripe rust or the effects of drought or climate change. EPB focuses on genetic diversity in a crop mixture that can withstand the variation in environmental effects, rather than relying solely on chemical inputs.

4.1. Genetic Diversity

The genetic diversity in the BPP and CCP populations is the core of the EPB method that promotes stability [3]. Analysis of genetic markers for differences of allele frequencies and genetic diversity in populations can be a useful approach to detect natural selection pressure [40]. In a previous study, genetic diversity based on single-sequence repeats (SSR) markers for CCPs could not be detected between populations in which they determined the management system did not drive allele frequency changes [5]. This can be seen in our results. The BPPs were not clustered with their respective parents, they were, however, clustered with the common parent, WA009733. The differentiation between clusters of genetic diversity is driven by pedigree rather than the location it was derived. This may be accounted for by the limited genetic variability in BPPs and the genetic differentiation due to the random assortment of alleles during the initial crossing rather than allele frequency changes due to the environment in which they were selected. The grouping of populations based on pedigree in our results indicates minimal change in allele frequency and increased rate of heterozygosity.

This observation in which the BPPs were clustered together without their respective parent was also seen with CCPs in Soliman and Allard [12]. The clusters represent the heterozygosity from the crossing of the two parents as stated above. This is supported by the minimal change in allele frequency but the increase in heterozygosity in our results. The genetic diversity and heterozygosity present in the population represents the potential response of the population to selection forces, natural or artificial. Natural selection is a slow process that favors alleles that contribute to the fitness of the genotype. Natural selection also drives allele frequency to genetic equilibrium or stability, in which alleles are not entirely removed from the population [41]. This is the driving force behind the maintenance of the genetic diversity needed for an appropriate response to the environment. Since genetic diversity is the central requirement for EPB, these populations need to evolve and need genetic diversity, heterozygosity, and the capacity to do so.

4.2. Performance

Agronomic, quality, and disease-resistance traits are important factors in developing genotypes. Yield during periods of drought favor bulk populations over uniform genotypes. The difference in the performance of the genotypes in differing locations represents the large genotype-by-environment interaction in the precipitation environments. The parent Stephens has the highest mean yield in environments with higher precipitation (Pullman and Central Ferry) but has the lowest mean yield in Lind which has the lowest mean precipitation. This illustrates the unstable performance of commercial varieties that are selected for specific environments. However, the EPs generally show less variation in performance over differing precipitation environments and thus exhibit higher stability and adaptability. Natural selection will favor high-yielding genotypes in environments with fluctuating biotic and abiotic selection pressures [9]. The higher-yielding genotypes are strongly favored in natural selection due to a positive correlation between yield ability and fitness components [9]. The ability for plants to germinate, survive, and reproduce seeds are important fitness components highly selected upon by natural selection, and thus lead to selection within segregating genotypes such as BPPs and CCPs [9].

Both BPPs and CCPs were significantly affected by their pedigrees and with some of the EPs yielding more than their parents. For example, the 104 BPP and 106 CCP out yielding their parent Stephens in Lind and outperformed their parent Albion in Pullman. The lower grain yield of the EPs

compared to their parents has been shown in previous studies [9,13,14]. However, this was in direct opposition to the classical study by Suneson [8]. The contradiction can be attributed to two factors: the length of time the CCPs were submitted to natural selection and the pedigree mixture. CCPs in the Suneson [8] study were submitted to a range of 12 to 29 generations, a much larger timeframe than the eight generations the EPs in this study were submitted to. Natural selection is a slow process driven by the fitness of genotypes, which can be affected by both abiotic and biotic stress and are dependent on the environment [41]. The longer generation time would allow the forces of natural selection to change the allele frequencies more than the EPs in our study. Thus, it would partially explain the higher performance of the Suneson CCPs, which had the time to both accumulate and fix favorable alleles.

The CCPs in the Suneson [8] study was composed of anywhere between 28 to 30 parents, a vast difference between the two parents BPPs and three-parent CCPs in our study. A higher number of parents greatly increases the genetic variability in the base population, thus allowing for a larger dispersion of allele frequencies and subsequent genetic gain potential. The BPPs in this study have just two parents, which limits the change in allele frequencies to the range and diversity of the parental pedigrees. The limited number of parents and generations can also explain the lack of statistical differences between BPPs and CCPs. In terms of selection, the genetic variability can be quickly reduced, and reach the limits of selection, causing genetic gain to no longer occur. This occurrence is common in breeding programs, and is the reason recurrent selection is needed to further genetic gain [42].

Quality traits are similar to yield in the fact that EPs performed on a pedigree basis, but the distinction between these two traits is seen in natural selection [9]. Natural selection will not directly improve the quality of a population unless the trait is genetically linked to a gene that is positively influenced by natural selection [9]. There is also a trade-off between the suggested negative correlation between yield and protein [43]. In soft white wheat, this is not as important of an issue compared to hard red wheat in which high protein is ideal. As a breeder selects genotypes with a higher yield, they must also take into account any reduction of grain protein. Therefore, including a high-protein parent into the creation of a BPP or CCP will not only account for a trade-off between grain yield and grain protein concentration but account for the lack of natural selection pressure on yield [9]. Bulk populations have been shown to maintain the mid-parent value for six quality traits even after 6 years [9]. This midparent value is exhibited in our effects and follows the same trend as yield [43].

Breeding for disease resistance is a major goal for most breeding programs because of the effect disease has on yield and quality performance. Disease resistance is commonly illustrated by single genes conferring vertical resistance. In stripe rust, the average resistance conferred by a single gene is only 3.5 years [44]. The use of mixtures of genotypes with different resistance genes in multilines or the pyramiding of several genes into a single genotype are strategies to delay the breakdown of resistance [45]. Natural selection has been shown to be effective in bulk populations [46,47]. This is explained by a higher fitness of resistant plants in which the resistant genotypes produce more seeds than susceptible genotypes. Therefore, a gradual push towards resistance by natural selection is effective. Our results show lower disease severity in the EPs than the parents with the exception of the common parent WA007933. This indicates a midparent value of most EPs due to a mixture of susceptible and resistant pedigrees.

Even though the EPs were not the most resistant genotypes, the effect of higher fitness for resistance in CCPs has been shown to reverse susceptibility after 45 generations [48]. This reversal suggests the possibility for the EPs in our study to increase their level of resistance, given more time and selection pressure. With more time comes more opportunity for meiotic events to break up linkage groups and reveal more genetic variance, which has been shown in the Illinois long-term selection experiment in maize [49]. As noted previously, a longer period also allows for more exposure to biotic stresses that create differences in fitness for natural selection to act upon. The effect of selection pressure is hinted at in our results with the EPs that were developed in Lind, which had low disease incidence and

selection pressure, performed worse when grown in Central Ferry and Pullman, which have higher precipitation and therefore disease incidence.

4.3. Stability

The presence of genotype-by-environment interaction occurs when genotypes differ in their relative performance across environments. Plant breeders handle this change in rank performance in three ways. They can ignore it and select the genotype that performs the best in all environments. They can reduce it by partitioning environments into similar subgroups and focus on each subgroup separately [42]. The last and one of the most common methods in breeding programs is in exploiting the effect of the environment and selecting a genotype for each environment. Exploiting genotype-by-environment interaction is the current breeding method for overcoming the significant difference between precipitation zones in inland Washington.

The significant differences in both temperature and precipitation in inland Washington have led to selection of uniform genotypes for each environment. An example of this is the precipitation adaptations for the different parents (Table 1). The effect of precipitation on different locations can clearly be seen by different performances of pedigrees in different locations and the difference in LSD values and significant differences. Lind is a low precipitation location, and greatly limits the performance of genotypes for grain yield, grain protein concentration, and disease severity. The lack of significant differences between genotypes in our study creates a challenge when trying to select superior genotypes. The lack of significant differences decreases the potential of transgressive segregation and response to selection. Large environmental differences and performances of genotypes create the need for multiple breeding populations and result in a considerable strain on resources for breeding programs in which they are operating two different breeding pipelines. The strain creates a need for stable genotypes that can be grown and exploited in every environment and frees up resources to develop a single breeding pipeline with a larger and more diverse breeding population to increase genetic gains rapidly.

Most breeders use the term stability to characterize genotypes, which show relatively constant yield independent of the environment [50]. Stability analysis assesses the genotype performance relative to other genotypes in different environments [42]. Stability analysis identifies genotypes that perform similarly in diverse environments and are referred to as ‘stable’ or ‘unstable.’ Multiple stability analyses need to be used because no single stability measure can adequately explain genotype performance over multiple environments [51]. Stability analyses can be correlated for a trait in question, and therefore different types of stability analysis must be used [52]. The four major benefits of genetic diversity that aid in stability are complementation, cooperation, compensation, and capacity [3].

In accordance with previous studies, the BPPs and CCPs conferred higher stability for agronomic, quality, and disease resistance traits [10,12,53,54]. Deviation from Regression has been used to measure stability in barley CCPs, in which they were significantly more stable than the commercial genotypes across environments. The ability for CCPs to maintain yield stability is reliant on the genetic diversity and heterozygosity of the population [9]. The effect of compensation can explain the stability occurring in the EPs. Compensation is supported by the drastic change in yield ranking of the parents from the high to the low precipitation environments as seen in Figure 3. As one parent fails in the low environment, the other parent, which performs better in the low precipitation environment, compensates for the reduction in yield and maintains the mean of the population. Compensation is indicated by the extreme performance of Stephens, while the common parent, WA009733, has a more consistent performance.

The stability of BPPs and CCPs also derives from the stabilizing forces of natural selection. Natural selection favors genes at intermediate frequencies and drives allele frequency to equilibrium and stability. The equilibrium is also known as genetic homeostasis, and resists changes in allele frequency [37]. Low gene frequencies reduce genetic variability and increase environmental sensitivity [41]. The broader genetic base and heterozygosity of the EPs allows for a wider range of

response to environmental pressure. The low genetic variation in the parental genotypes is driven by the fixation of favorable alleles and narrow genetic variation within the population. This creates uniform genotypes that do not have the genetic variation to deal with and respond to environmental fluctuations or novel stress factors. The uniform genotypes may not have alleles capable of the appropriate response. The inclusion of just one more parent in the CCPs compared to the BPPs, was not shown to include enough genetic variability for differentiation between the different types of EPs.

The stability of BPPs and CCPs displayed over the diverse precipitation zones in inland Washington, is an indication of the EPs ability to handle fluctuating environmental conditions. These results support the conclusions displayed by another breeding method termed evolutionary participatory plant breeding (EPPB) that was also examined across diverse precipitation zones in inland Washington [7]. These evolutionary breeding approaches have proven to develop EPs that are able to be maintained via continued selection in changing conditions that are displayed in either diverse environmental conditions or climate change.

4.4. Selection

For most plant breeders, both yield and stability are essential goals that allow high performance while facing abiotic and biotic stresses [9]. Stability is meaningful in selection when it is associated with high yield or excellent performance for other traits. A misconception of selecting both yield and stability is the reduction in yield when selection is based on criterion other than yield [34]. The stability component of Kang's Stability Statistic is based on Shukla's Stability Variance statistic and provides the contribution of a genotype to the total genotype-by-environment interaction attributable to all genotypes in the trial [34]. Flores et al. [50], found Kang's Stability Statistic and AMMI to be useful tools for simultaneously selecting for yield and stability [50]. The selection indices still ranked and selected the high yielding parents even with lower stability. Whereas the selection indices proved useful for negative selection for high protein and disease severity showing differential performance between all EPs.

Differences in performance between the parents and the EPs can be explained by the type of selection they were submitted to. The natural selection used in the creation of the BPPs and CCPs selects for fitness, which is defined as the contribution of genes to the next generation [41]. The underperformance of the EP in comparison to their adapted parent is due to the presence of the unfavorable alleles still present in the population. In natural selection, unfavorable genes are not removed from the population as fast as artificial selection due to the intensity of selection forces. This slower process may explain the lack of change in allele frequency and higher genetic diversity in the EPs. As long as a few plants pass on the unfavorable alleles, they will stay in the population, thus reducing the performance of the population. However, if the unfavorable alleles contribute to lower fitness, the allele frequency of the unfavorable alleles will be reduced. Since the change in alleles is due to the fitness of the genotypes, the selection intensity is generally less than in artificial selection. This results in a slower process to drive allele frequency change for specific environmental adaptation, which can occur due to the fixation of favorable alleles.

Artificial selection was the method of production for the parents. In artificial selection, only genotypes showing transgressive segregation are selected, and the genotypes not selected do not contribute any progeny to the next generation [41]. Artificial selection rapidly accumulates alleles to increase performance and response to selection. However, this can result in the complete loss of alleles and reduction in genetic diversity needed to respond to fluctuating environmental influences. The reduced response explains the low stability of the parental genotypes and creates a need to breed genotypes for specific environments, as mentioned previously.

The BPPs and CCPs performed best in the environment they were selected in, but greatly influenced by their pedigree. The performance of the EPs has been reported in previous studies [55,56]. The EPs' performance, coupled with the grouping of pedigrees, exhibits the ability of the EPB method to improve the performance of a population without significantly changing allele frequency outside

of their original pedigree. This is not to say that natural selection did not change allele frequency. There was a significant improvement of the F_8 populations in respect of their initial F_3 populations. However, the F_8 populations performed better than the F_3 populations as long as the EPs' pedigrees were also adapted to the same environments they were selected in. Therefore, natural selection can be effective but also works in conjunction with the pedigree of the population. These observations can be explained by the narrow genetic base of having just two parents in both adapted to the same environment and by the slow and stabilizing change in allele frequency due to natural selection.

Our results show that natural selection was shown to select for higher-performing genotypes for a specific environment but does not overcome the parental pedigree and its performance. In our study, the BPPs and CCPs consist of pedigrees with parents adapted to the same environment. If the EPs consisted of parents adapted to different environments, they would potentially have a higher genetic diversity, and the capacity for natural selection to increase favorable alleles and performance regardless of their parental pedigree, as seen in Suneson [8].

One of the reasons natural selection increased F_8 's over F_3 's dependent on pedigree adaptation is that the pedigrees adapted to an environment have been selected over time to accumulate favorable alleles for a higher fitness in said environment. Therefore, since natural selection is a slow process, unfavorable alleles from poor-performing pedigrees or pedigrees not adapted to the environment may still be present in the EPs and reduce its performance. The EPs with adapted pedigrees would already have a majority of favorable alleles for the environment. Those favorable alleles would have higher fitness and rapidly drive the change in allele frequency and performance closer to their adapted parental genotypes. If given more time, the unfavorable alleles may be removed from the EPs and eventually increase its performance, similar to the observations in Suneson [8].

The demonstration showed that the BPPs and CCPs performed better in the environment in which they were developed in, and the higher stability demonstrated the ability for the EPB method to develop populations that are stable without sacrificing performance. These observations of both the CCPs and BPPs creates a valuable resource for breeders that allow the creation of varieties that can be selected in one environment and perform well across varying environments. The EPs will allow the consolidation of breeding populations and reduce the need for a large number of environments for testing. With the right selection of parents, the EPB method can be a valuable tool for breeders to focus their breeding programs without having to divide their resources for different precipitation zones. The potential for adaptation presented by this study shows the capability of the EPB method to develop stable BPPs and CCPs for genetic resources and germplasm for future pure line genotypes to be developed from or even released as BPPs and CCPs.

5. Conclusions

The EPB method significantly improved F_8 populations in respect of their initial F_3 populations in just 5 years of natural selection as long as these populations contained pedigrees that were also adapted to the same environments they were selected in. Both BPPs and CCPs were significantly affected by their pedigrees and did not always out-yield their parents, but the EPs performed better in the environment in which they were developed in. The EPs showed significant stability across precipitation zones and out-performed their respective parents in that regard. The EPB method was shown to increase stability and performance of both BPPs and CCPs similarly. This study displayed the validity of EPB in regard to creating genetic diversity adaptable to different precipitation zones, and as a valuable resource for breeding programs.

Supplementary Materials: The following are available online at <http://www.mdpi.com/2071-1050/12/22/9728/s1>, File S1: EPB genotype data; File S2: EPB phenotype data; Table S1: Model-based clustering classification for genetic markers of evolutionary populations.

Author Contributions: Conceptualization, S.S.J.; methodology, S.S.J., S.R.L., K.A.B., K.M.M. and A.H.C.; formal analysis, L.F.M.; resources, S.S.J. and A.H.C.; data curation, L.F.M.; writing—original draft preparation,

L.F.M.; writing—review and editing, S.S.J., A.H.C. and K.M.M.; supervision, A.H.C.; funding acquisition, S.S.J. and A.H.C. All authors have read and agreed to the published version of the manuscript.

Funding: This research was partially funded by the National Institute of Food and Agriculture (NIFA) of the U.S. Department of Agriculture (Award number 2016-68004-24770) and Hatch project 1014919.

Acknowledgments: The authors would like to acknowledge the Washington State University Winter Wheat Breeding Program personnel Gary Shelton for plot maintenance and data collection under field conditions.

Conflicts of Interest: The authors declare no conflict of interest.

References

1. Acquaaah, G. *Principles of Plant Genetics and Breeding*, 2nd ed.; Wiley-Blackwell: Hoboken, NJ, USA, 2012.
2. Bernardo, R. *Essentials of Plant Breeding*; Stemma Press: Woodbury, MN, USA, 2014; ISBN 978-0-9720724-2-7.
3. Döring, T.F.; Knapp, S.; Kovacs, G.; Murphy, K.; Wolfe, M.S. Evolutionary Plant Breeding in Cereals—Into a New Era. *Sustainability* **2011**, *3*, 1944–1971. [[CrossRef](#)]
4. Phillips, S.L.; Wolfe, M.S. Evolutionary plant breeding for low input systems. *J. Agric. Sci.* **2005**, *143*, 245–254. [[CrossRef](#)]
5. Knapp, S.; Döring, T.F.; Jones, H.E.; Snape, J.; Wingen, L.U.; Wolfe, M.S.; Leverington-Waite, M.; Griffiths, S. Natural selection towards wild-type in composite cross populations of winter wheat. *Front. Plant. Sci.* **2020**, *10*, 1757. [[CrossRef](#)] [[PubMed](#)]
6. Ceccarelli, S.; Grando, S.; Maatougui, M.; Michael, M.; Slash, M.; Haghparsat, R.; Rahmanian, M.; Taheri, A.; Al-Yassin, A.; Benbelkacem, A.; et al. Plant breeding and climate changes. *J. Agric. Sci.* **2010**, *148*, 627–637. [[CrossRef](#)]
7. Murphy, K.M.; Carter, A.H.; Jones, S.S. Evolutionary breeding and climate change. In *Genomics and Breeding for Climate-Resilient Crops*; Springer: Berlin, Germany, 2013; pp. 377–389.
8. Suneson, C.A. An Evolutionary Plant Breeding Method1. *Agron. J.* **1956**, *48*, 188. [[CrossRef](#)]
9. Murphy, K.; Lammer, D.; Lyon, S.; Carter, B.; Jones, S.S. Breeding for organic and low-input farming systems: An evolutionary–participatory breeding method for inbred cereal grains. *Renew. Agric. Food Syst.* **2005**, *20*, 48–55. [[CrossRef](#)]
10. Döring, T.F.; Annicchiarico, P.; Clarke, S.; Haigh, Z.; Jones, H.E.; Pearce, H.; Snape, J.; Zhan, J.; Wolfe, M.S. Comparative analysis of performance and stability among composite cross populations, variety mixtures and pure lines of winter wheat in organic and conventional cropping systems. *Field Crops Res.* **2015**, *183*, 235–245. [[CrossRef](#)]
11. Döring, T.; Wolfe, M.; Jones, H.; Pearce, H.; Zhan, J. Breeding for resilience in wheat—Nature’s choice. In *Proceedings of the Breeding for Resilience: A Strategy for Organic and Low-Input Farming Systems? Eucarpia 2nd Conference of the Organic and Low-Input Agriculture Section, Paris, France, 1–3 December 2010*; pp. 47–50.
12. Soliman, K.M.; Allard, R.W. Grain Yield of Composite Cross Populations of Barley: Effects of Natural Selection. *Crop Sci.* **1991**, *31*, 705. [[CrossRef](#)]
13. Lammerts van Bueren, E.T.; Jones, S.S.; Tamm, L.; Murphy, K.M.; Myers, J.R.; Leifert, C.; Messmer, M.M. The need to breed crop varieties suitable for organic farming, using wheat, tomato and broccoli as examples: A review. *NJAS—Wageningen. J. Life Sci.* **2011**, *58*, 193–205. [[CrossRef](#)]
14. Brumlop, S.; Pfeiffer, T.; Finckh, M.R. Evolutionary Effects on Morphology and Agronomic Performance of Three Winter Wheat Composite Cross Populations Maintained for Six Years under Organic and Conventional Conditions. *Org. Farming* **2017**, *3*, 34–50. [[CrossRef](#)]
15. Zenghelis, D. *Stern Review: The Economics of Climate Change*; HM Treasury: London, UK, 2006; pp. 686–702.
16. Schillinger, W.F.; Papendick, R.I.; Guy, S.O.; Rasmussen, P.E. *Dryland Agriculture*, 2nd ed.; American Society of Agronomy: Madison, WI, USA, 2006; Volume 23.
17. Peterson, C.J.; Allan, R.E.; Rubenthaler, G.L.; Line, R.F. Registration of ‘Eltan’ wheat. *Crop Sci.* **1991**, *31*, 1704.
18. Peterson, C.J.; Allan, R.E.; Rubenthaler, G.L.; Hoffmann, J.A.; George, D.W.; Vogel, O.A. Lewjain wheat. *Crop. Sci.* **1983**, *23*, 1014. [[CrossRef](#)]
19. Kronstad, W.E.; Rohde, C.R.; Kolding, M.F.; Metzger, R.J. Registration of Stephens Wheat1 (Reg. No. 614). *Crop Sci.* **1978**, *18*, 1097. [[CrossRef](#)]

20. Cavanagh, C.R.; Chao, S.; Wang, S.; Huang, B.E.; Stephen, S.; Kiani, S.; Forrest, K.; Saintenac, C.; Brown-Guedira, G.L.; Akhunova, A. Genome-wide comparative diversity uncovers multiple targets of selection for improvement in hexaploid wheat landraces and cultivars. *Proc. Natl. Acad. Sci. USA* **2013**, *110*, 8057–8062. [CrossRef] [PubMed]
21. R Core Team. *R: A Language and Environment for Statistical Computing*; R Foundation for Statistical Computing: Vienna, Austria, 2018.
22. Yearly Data | AgWeatherNet at Washington State University. Available online: <http://weather.wsu.edu/?p=93250> (accessed on 26 November 2019).
23. Divisional Data Select. Available online: <https://www7.ncdc.noaa.gov/CDO/CDODivisionalSelect.jsp#> (accessed on 16 July 2020).
24. Knott, C.A. *AGR-224: Identifying Wheat Growth Stages*; University of Kentucky: Lexington, KY, USA, 2016.
25. Line, R.F.; Qayoum, A. *Virulence, Aggressiveness, Evolution and Distribution of Races of Puccinia striiformis (the Cause of Stripe Rust of Wheat) in North America, 1968–1987*; Technical Bulletin USA; United States Department of Agriculture: Washington, DC, USA, 1992.
26. Peterson, R.F.; Campbell, A.B.; Hannah, A.E. A Diagrammatic Scale for Estimating Rust Intensity on Leaves and Stems of Cereals. *Can. J. Res.* **1948**, *26c*, 496–500. [CrossRef]
27. Robinson, G.K. That BLUP is a Good Thing: The Estimation of Random Effects. *Stat. Sci.* **1991**, *6*, 15–32. [CrossRef]
28. De Mendiburu, F.; de Mendiburu, M.F. *Package ‘agricolae: Statistical Procedures for Agricultural Research’*; R Package Version 2019, 1.3-1; R Foundation for Statistical Computing: Vienna, Austria, 2019.
29. Alvarado, G.; López, M.; Vargas, M.; Pacheco, Á.; Rodríguez, F.; Burgueño, J.; Crossa, J. *META-R (Multi Environment Trial Analysis with R for Windows)*; Version 6.04; CIMMYT Research Data and Software Repository Network: Mexico City, Mexico, 2019.
30. Purchase, J.L. Parametric Analysis to Describe Genotype × Environment Interaction and Yield Stability in Winter Wheat. Ph.D. Thesis, University of the Free State, Bloemfontein, South Africa, 1997.
31. Shukla, G.K. Some statistical aspects of partitioning genotype environmental components of variability. *Heredity* **1972**, *29*, 237–245. [CrossRef]
32. Wricke, G. On a method of understanding the biological diversity in field research. *Z Pflanzenzucht* **1962**, *47*, 92–96.
33. Eberhart, S.T.; Russell, W.A. Stability parameters for comparing varieties 1. *Crop Sci.* **1966**, *6*, 36–40. [CrossRef]
34. Kang, M.S. Simultaneous selection for yield and stability in crop performance trials: Consequences for growers. *Agron. J.* **1993**, *85*, 754–757. [CrossRef]
35. Dia, M.; Wehner, T.C.; Arellano, C. RGxE: An R Program for Genotype × Environment Interaction Analysis. *Am. J. Plant. Sci.* **2017**, *8*, 1672–1698. [CrossRef]
36. Olivoto, T.; Lúcio, A.D. metan: An R package for multi-environment trial analysis. *Methods Ecol. Evol.* **2020**, *11*, 783–789. [CrossRef]
37. Dia, M.; Wehner, T.C.; Hassell, R.; Price, D.S.; Boyhan, G.E.; Olson, S.; King, S.; Davis, A.R.; Tolla, G.E.; Bernier, J. Value of Locations for Representing Mega-Environments and for Discriminating Yield of Watermelon in the US. *Crop Sci.* **2016**, *56*, 1726–1735. [CrossRef]
38. Dia, M.; Wehner, T.C.; Perkins-Veazie, P.; Hassell, R.; Price, D.S.; Boyhan, G.E.; Olson, S.M.; King, S.R.; Davis, A.R.; Tolla, G.E. Stability of fruit quality traits in diverse watermelon cultivars tested in multiple environments. *Hortic. Res.* **2016**, *3*, 1–11. [CrossRef] [PubMed]
39. Yan, W. *Crop Variety Trials: Data Management and Analysis*; John Wiley & Sons, Blackwell: Hoboken, NJ, USA, 2014; ISBN 978-1-118-68856-4.
40. Luu, K.; Bazin, E.; Blum, M.G.B. pcadapt: An R package to perform genome scans for selection based on principal component analysis. *Mol. Ecol. Resour.* **2017**, *17*, 67–77. [CrossRef]
41. Falconer, D.S.; Mackay, T.F.C. *Introduction to Quantitative Genetics*, 4th ed.; Pearson Education Limited: Harlow Essex, England, 1996.
42. Bernardo, R. *breeding for Quantitative Traits in Plants*, 2nd ed.; Stemma Press: Woodbury, MN, USA, 2010; ISBN 978-0-9720724-1-0.
43. Carver, B.F. *Wheat: Science and Trade*; Wiley-Blackwell: Ames, IA, USA, 2009.

44. Case, A.J.; Naruoka, Y.; Chen, X.; Garland-Campbell, K.A.; Zemetra, R.S.; Carter, A.H. Mapping Stripe Rust Resistance in a BrundageXCoda Winter Wheat Recombinant Inbred Line Population. *PLoS ONE* **2014**, *9*, e91758. [\[CrossRef\]](#)
45. Jackson, L.F. Conservation of Scald Resistance in Barley Composite Cross Populations. *Phytopathology* **1978**, *68*, 645. [\[CrossRef\]](#)
46. Buzzell, R.I.; Haas, J.H. Natural and Mass Selection Estimates of Relative Fitness for the Soybean rps Gene 1. *Crop Sci.* **1972**, *12*, 75–76. [\[CrossRef\]](#)
47. Hartwig, E.E.; Kilen, T.C.; Young, L.D.; Edwards, C.J., Jr. Effects of Natural Selection in Segregating Soybean Populations Exposed to Phytophthora Rot or Soybean Cyst Nematodes 1. *Crop Sci.* **1982**, *22*, 588–590. [\[CrossRef\]](#)
48. Muona, O.; Allard, R.W.; Webster, R.K. Evolution of resistance to *Rhynchosporium secalis* (Oud.) Davis in barley composite cross II. *Theor. Appl. Genet.* **1982**, *61*, 209–214. [\[CrossRef\]](#)
49. Dudley, J.W. From Means to QTL: The Illinois Long-Term Selection Experiment as a Case Study in Quantitative Genetics. *Crop Sci.* **2007**, *47*, S-20–S-31. [\[CrossRef\]](#)
50. Flores, F.; Moreno, M.T.; Cubero, J.I. A comparison of univariate and multivariate methods to analyze $G \times E$ interaction. *Field Crops Res.* **1998**, *56*, 271–286. [\[CrossRef\]](#)
51. Dia, M.; Wehner, T.C.; Hassell, R.; Price, D.S.; Boyhan, G.E.; Olson, S.; King, S.; Davis, A.R.; Tolla, G.E. Genotype \times environment interaction and stability analysis for watermelon fruit yield in the United States. *Crop Sci.* **2016**, *56*, 1645–1661. [\[CrossRef\]](#)
52. Choi, H.; Esser, A.; Murphy, K.M. $G \times E$ interaction and stability of β -glucan content in barley in the palouse region of Eastern Washington. *Crop Sci.* **2020**, *60*. [\[CrossRef\]](#)
53. Frey, K.J.; Maldonado, U. Relative Productivity of Homogeneous and Heterogeneous Oat Cultivars in Optimum and Suboptimum Environments 1. *Crop Sci.* **1967**, *7*, 532–535. [\[CrossRef\]](#)
54. Mundt, C.C. Use of multiline cultivars and cultivar mixtures for disease management. *Annu. Rev. Phytopathol.* **2002**, *40*, 381–410. [\[CrossRef\]](#) [\[PubMed\]](#)
55. Taylor, L.H.; Atkins, R.E. Effect of natural selection in segregating generations upon bulk populations in barley. *Iowa St. Coll. J. Sci.* **1954**, *29*, 147–162.
56. Hockett, E.A.; Eslick, R.F.; Qualset, C.O.; Dubbs, A.L.; Stewart, V.R. Effects of Natural Selection in Advanced Generations of Barley Composite Cross II 1. *Crop Sci.* **1983**, *23*, 752–756. [\[CrossRef\]](#)

Publisher’s Note: MDPI stays neutral with regard to jurisdictional claims in published maps and institutional affiliations.



© 2020 by the authors. Licensee MDPI, Basel, Switzerland. This article is an open access article distributed under the terms and conditions of the Creative Commons Attribution (CC BY) license (<http://creativecommons.org/licenses/by/4.0/>).