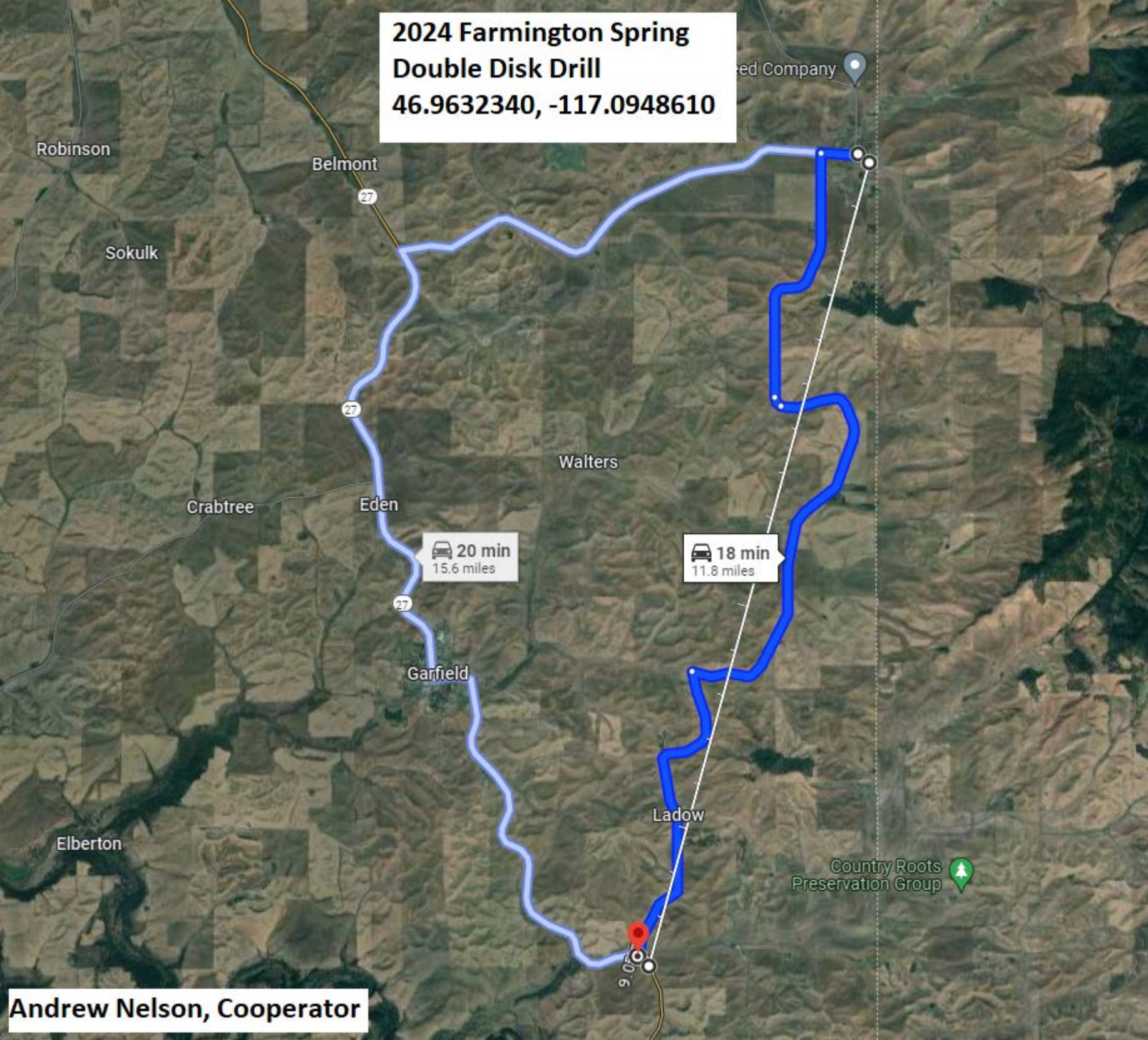


**2024 Farmington Spring  
Double Disk Drill  
46.9632340, -117.0948610**



**Andrew Nelson, Cooperator**

## 2024 Soft White Spring Wheat Trial, Farmington

## SWS Seeding Rate Trial

9	WB6341	WA8384	WA8433	TMC Lochaven	BZTW20-303	WA8434	Tekoa	Ryan	BZTW20-345	Roger	Roger	Roger	Roger	
		Roger	WB6211CLP	Louise	WA8380 CL+	Seahawk	Melba	WA8408	Ryan (Small)	Ryan (15 sd/sqft)	Ryan (30 sd/sqft)	Ryan (20 sd/sqft)		
7	Glee	BZTW20-343	Hedge CL+	WA8435 CL+	WA8351	WA8327	JD	Butch CL+	Ryan (Large)	Ryan (25 sd/sqft)	Ryan (10 sd/sqft)	Ryan (35 sd/sqft)		
		WA8380 CL+	Melba	JD	Ryan	Hedge CL+	Ryan (Large)	Tekoa	BZTW20-303	Ryan (10 sd/sqft)	Ryan (25 sd/sqft)	Ryan (35 sd/sqft)		
5	JD	TMC Lochaven	Ryan (Small)	Butch CL+	WB6211CLP	WA8408	BZTW20-343	WA8433	Louise	Ryan (20 sd/sqft)	Ryan (15 sd/sqft)	Ryan (30 sd/sqft)		
		BZTW20-345	WA8435 CL+	WA8327	Seahawk	Roger	WA8351	WA8384	WA8434	Ryan (25 sd/sqft)	Ryan (20 sd/sqft)	Ryan (10 sd/sqft)		
3	Roger	WA8327	WA8380 CL+	WA8408	WA8384	WA8433	WA8434	WA8435 CL+	JD	Ryan (30 sd/sqft)	Ryan (15 sd/sqft)	Ryan (35 sd/sqft)		
		WA8351	Ryan (Large)	Ryan	Ryan (Small)	Louise	Butch CL+	Seahawk	Tekoa	Ryan (35 sd/sqft)	Ryan (30 sd/sqft)	Ryan (25 sd/sqft)		
1		WB6211CLP	BZTW20-303	BZTW20-343	BZTW20-345	TMC Lochaven	Roger	Hedge CL+	Melba	Ryan (10 sd/sqft)	Ryan (15 sd/sqft)	Ryan (20 sd/sqft)		
		1	2	3	4	5	6	7	8					

	Name
1	WB6211CLP
2	BZTW20-303
3	BZTW20-343
4	BZTW20-345
5	TMC Lochaven
6	Roger
7	Hedge CL+
8	Melba
9	Tekoa
10	Seahawk
11	Butch CL+
12	Louise
13	Ryan (Small)
14	Ryan
15	Ryan (Large)
16	WA8351
17	WA8327
18	WA8380 CL+
19	WA8408
20	WA8384
21	WA8433
22	WA8434
23	WA8435 CL+
24	JD

3 Replications, Alpha-Lattice Design

<http://variety.wsu.edu>

Regular
Club

Planting Date/Rate
980,000 sd/ac



## 2024 Hard Red Spring Wheat Trial, Farmington

## HRS Seeding Rate Trial

9	Hale	WB9623	CP3915	WA8436 CL+	ORS226518	WB9662	WA8406	IDO2105S	Allegiant 6633	Kelse	Chet	Chet	Chet
8	MT Dutton	MT2030	Chet	AP Venom	Allegiant 6765	WB9636	CP3322	LCS Hammer AX	BZTR20-115	Glee	Hale (20 sd/sqft)	Hale (35 sd/sqft)	Hale (10 sd/sqft)
7	CP3099A	Net CL+	WB9668	WA8437 CL+	ORS227913	BZ920-136	WA8407	MT Carlson	WA8393	Alum	Hale (30 sd/sqft)	Hale (15 sd/sqft)	Hale (25 sd/sqft)
6	CP3322	AP Venom	IDO2105S	MT Carlson	Hale	WA8393	WB9623	WB9662	ORS227913	Allegiant 6765	Hale (25 sd/sqft)	Hale (15 sd/sqft)	Hale (20 sd/sqft)
5	Chet	WB9636	ORS226518	Allegiant 6633	WA8437 CL+	MT2030	WB9668	Glee	Alum	WA8406	Hale (10 sd/sqft)	Hale (35 sd/sqft)	Hale (30 sd/sqft)
4	LCS Hammer AX	BZ920-136	CP3099A	Kelse	WA8436 CL+	BZTR20-115	CP3915	Net CL+	WA8407	MT Dutton	Hale (10 sd/sqft)	Hale (25 sd/sqft)	Hale (35 sd/sqft)
3	WA8407	WA8436 CL+	WA8437 CL+	Glee	IDO2105S	ORS227913	ORS226518	BZTR20-115	BZ920-136	MT2030	Hale (20 sd/sqft)	Hale (30 sd/sqft)	Hale (15 sd/sqft)
2	WA8406	WA8393	Hale	Net CL+	Chet	Alum	AP Venom	Kelse	WB9636	WB9623	Hale (35 sd/sqft)	Hale (30 sd/sqft)	Hale (25 sd/sqft)
1	Allegiant 6633	Allegiant 6765	CP3322	CP3915	CP3099A	LCS Hammer AX	MT Carlson	MT Dutton	WB9668	WB9662	Hale (10 sd/sqft)	Hale (15 sd/sqft)	Hale (20 sd/sqft)
	1	2	3	4	5	6	7	8	9	10			

Entry	Name
1	Allegiant 6633
2	Allegiant 6765
3	CP3322
4	CP3915
5	CP3099A
6	LCS Hammer AX
7	MT Carlson
8	MT Dutton
9	WB9668
10	WB9662
11	WB9623
12	WB9636
13	Kelse
14	AP Venom
15	Alum

Entry	Name
16	Chet
17	Net CL+
18	Hale
19	WA8393
20	WA8406
21	WA8407
22	WA8436 CL+
23	WA8437 CL+
24	Glee
25	IDO2105S
26	ORS227913
27	ORS226518
28	BZTR20-115
29	BZ920-136
30	MT2030

Planting Date/Rate
980,000 sd/ac



## 2024 Spring Barley Trial, Farmington

Roger	9	20WAM-783.1	HO516-429	Survivor	Claymore	YU518-415	BC Leandra	AAC Connect	Carleton	Roger
	8	Successor	Lenetah	BC Marietta	20WAM-487.1	BC Lexy	LCS Diablo	20WAM-721.1	LCS Titan (LGBU17-1320A)	
	7	Altorado	LCS Odyssey	X20024-41	DH131756	20WAM-248.1	KWS Enduris	BC Elinor	ACC Synergy	
	6	20WAM-487.1	LCS Diablo	KWS Enduris	AAC Connect	LCS Odyssey	ACC Synergy	BC Leandra	Claymore	
	5	Survivor	LCS Titan (LGBU17-1320A)	BC Elinor	Lenetah	20WAM-721.1	Altorado	HO516-429	BC Marietta	
	4	Carleton	X20024-41	20WAM-248.1	BC Lexy	Successor	DH131756	20WAM-783.1	YU518-415	
	3	20WAM-248.1	20WAM-487.1	20WAM-721.1	20WAM-783.1	HO516-429	YU518-415	X20024-41	KWS Enduris	
	2	DH131756	ACC Synergy	AAC Connect	LCS Titan (LGBU17-1320A)	BC Marietta	BC Elinor	BC Lexy	BC Leandra	
	1	Lenetah	Claymore	Altorado	Carleton	Survivor	Successor	LCS Odyssey	LCS Diablo	
		1	2	3	4	5	6	7	8	

	Name
1	Lenetah
2	Claymore
3	Altorado
4	Carleton
5	Survivor
6	Successor
7	LCS Odyssey
8	LCS Diablo
9	BC Leandra
10	BC Lexy
11	BC Elinor
12	BC Marietta
13	LCS Titan (LGBU17-1320A)
14	AAC Connect
15	ACC Synergy
16	DH131756
17	20WAM-248.1
18	20WAM-487.1
19	20WAM-721.1
20	20WAM-783.1
21	HO516-429
22	YU518-415
23	X20024-41
24	KWS Enduris

3 Replications, Alpha-Lattice Design

<http://variety.wsu.edu>

Feed Type
Malt Type

Planting Date/Rate
1,175,000 sd/ac

